



Everest Biotech Ltd
Cherwell Innovation Centre
77 Heyford Park
Upper Heyford
Oxfordshire
OX25 5HD, United Kingdom

everestbiotech.com

sales@everestbiotech.com

support@everestbiotech.com

Tel +44 1869 238326

Fax +44 1869 238327

Research Use Only. Not for diagnostic or therapeutic use.

Storage: For long-term storage keep aliquots at -20°C. (Store no longer than 12 months at 4°C). Minimize freezing and thawing.

EB05230 - Goat Anti-PPP2CA / PPP2CB Antibody

Size: 100µg specific antibody in 200µl



Target Protein

Principal Names: serine/threonine protein phosphatase 2A, catalytic subunit, beta isoform, protein phosphatase type 2A catalytic subunit, protein phosphatase 2, catalytic subunit, beta isoform, PP2A-beta, PP2CB, protein phosphatase 2 (formerly 2A), catalytic subunit, beta isoform, PPP2CB, serine/threonine-protein phosphatase 2A catalytic subunit alpha isoform, serine/threonine protein phosphatase 2A, catalytic subunit, alpha isoform, replication protein C, protein phosphatase 2, catalytic subunit, alpha isoform, PP2A-alpha, RP-C, PP2CA, PP2Ac, protein phosphatase 2 (formerly 2A), catalytic subunit, alpha isoform, PPP2CA

Official Symbol: PPP2CA / PPP2CB

Accession Number(s): NP_002706.1; NP_004147.1

Human GeneID(s): [5515](#), [5516](#)

Non-Human GeneID(s): 19052 (mouse), 24672 (rat)

Important Comments: Two variants NP_001009552.1 and NP_004147.1 represent identical protein.

Immunogen

Peptide with sequence C-EPHVTRRTPDYFL, from the C Terminus of the protein sequence according to NP_002706.1; NP_004147.1.

Please note the [peptide](#) is available for sale.

Purification and Storage

Purified from goat serum by ammonium sulphate precipitation followed by antigen affinity chromatography using the immunizing peptide.

Supplied at 0.5 mg/ml in Tris saline, 0.02% sodium azide, pH7.3 with 0.5% bovine serum albumin.

Aliquot and store at -20°C. Minimize freezing and thawing.

Applications Tested

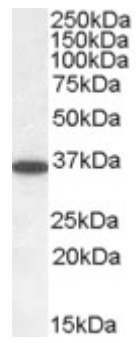
Peptide ELISA: antibody detection limit dilution 1:32000.

Western blot: Approx 35kDa band observed in Human Brain (Cerebellum), Mouse Brain and Rat Brain lysates (calculated MW of 35.6kDa according to NP_002706.1 and NP_004147.1). Recommended concentration: 0.05-0.2µg/ml.

Species Reactivity

Tested: Human

Expected from sequence similarity: Human, Mouse, Rat, Dog, Rabbit, Pig, Cow



EB05230 (0.05 μ g/ml) staining of Human Cerebellum lysate (35 μ g protein in RIPA buffer). Primary incubation was 1 hour. Detected by chemiluminescence.