



UK Office

Everest Biotech Ltd

Cherwell Innovation Centre
77 Heyford Park
Upper Heyford
Oxfordshire
OX25 5HD
UK

Enquiries:

info@everestbiotech.com

Sales:

sales@everestbiotech.com

Tech support:

support@everestbiotech.com

Tel: +44 (0)1869 238326

Fax: +44 (0)1869 238327

US Office

Everest Biotech c/o Abcore

405 Maple Street, Suite A106
Ramona,
CA 92065
USA

Inquiries:

info@everestbiotech.com

Sales:

usasales@everestbiotech.com

Tech support:

support@everestbiotech.com

Tel: 888-320-4628 (toll-free)

Fax: 888-841-9041

www.everestbiotech.com

**Research Use Only. Not for
diagnostic or therapeutic use.**

EB09407 - Goat Anti-PPP2R4 / PP2A Antibody

Size: 100µg specific antibody in 200µl



Target Protein

Principal Names: PPP2R4, protein phosphatase 2A activator, regulatory subunit 4, MGC2184, PP2A, PR53, PTPA, OTTHUMP00000022333, PP2A phosphatase activator, PP2A, subunit B\1, phosphotyrosyl phosphatase activator, protein phosphatase 2A, regulatory subunit B\1, protein phosphatase 2A, regulatory subunit B\1 (PR 53)

Official Symbol: PTPA

Accession Number(s): NP_821068.1; NP_066954.2; NP_821070.1

Human GeneID(s): [5524](#)

Non-Human GeneID(s): 110854 (mouse), 362102 (rat)

Important Comments: This antibody is expected to recognize all reported isoforms (NP_821068.1; NP_066954.2; NP_821070.1). Reported variants NP_066954.2 and NP_821067.1 represent identical protein.

Immunogen

Peptide with sequence C-GSLLPIHPVTSG, from the C Terminus of the protein sequence according to NP_821068.1; NP_066954.2; NP_821070.1.

Please note the [peptide](#) is available for sale.

Purification and Storage

Purified from goat serum by ammonium sulphate precipitation followed by antigen affinity chromatography using the immunizing peptide.

Supplied at 0.5 mg/ml in Tris saline, 0.02% sodium azide, pH7.3 with 0.5% bovine serum albumin.

Aliquot and store at -20°C. Minimize freezing and thawing.

Applications Tested

Peptide ELISA: antibody detection limit dilution 1:32000.

Western blot: Approx 37kDa band observed in Human, Mouse and Rat Liver lysates and in lysates of cell line HepG2 (calculated MW of 36.8kDa according to NP_066954.2).

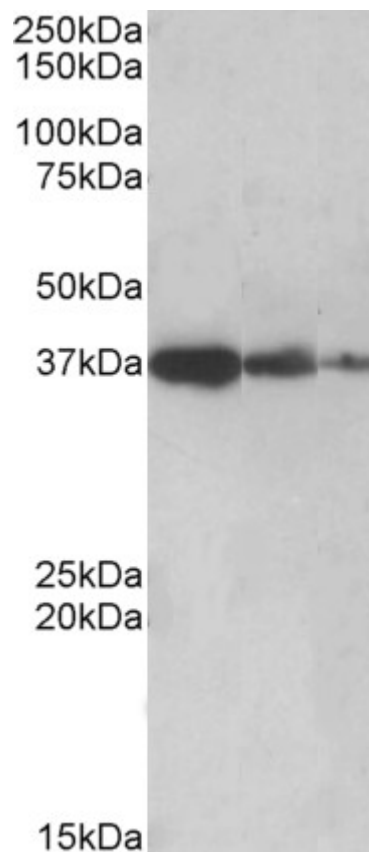
Recommended concentration: 0.5-2µg/ml. Primary incubation was 1 hour.

IHC: Paraffin embedded Human Testis. Recommended concentration: 3.75µg/ml.

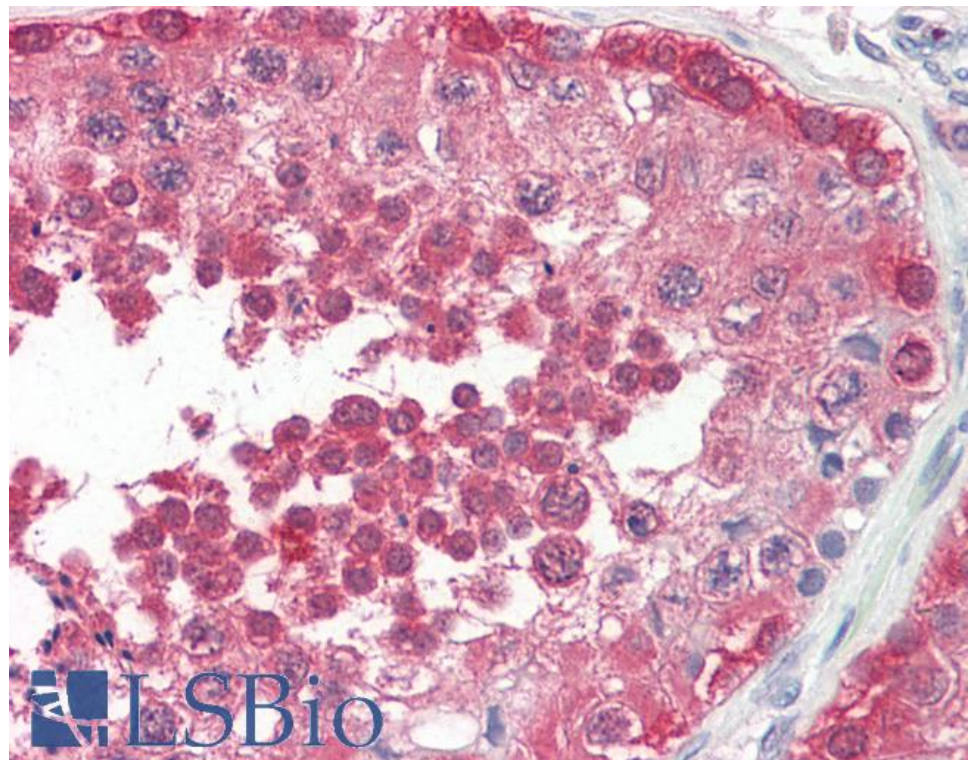
Species Reactivity

Tested: Human, Mouse, Rat

Expected from sequence similarity: Human, Mouse, Rat, Dog, Cow



EB09407 (0.5 μ g/ml) staining of Human Liver lysate (lane 1), Mouse Liver (lane 2) and Rat Liver (lane 3) (35 μ g protein in RIPA buffer). Detected by chemiluminescence.



EB09407 (3.75 μ g/ml) staining of paraffin embedded Human Testis. Steamed antigen retrieval with citrate buffer pH 6, AP-staining.