



Everest Biotech Ltd  
Cherwell Innovation Centre  
77 Heyford Park  
Upper Heyford  
Oxfordshire  
OX25 5HD, United Kingdom

[everestbiotech.com](http://everestbiotech.com)

[sales@everestbiotech.com](mailto:sales@everestbiotech.com)

[support@everestbiotech.com](mailto:support@everestbiotech.com)

Tel +44 1869 238326

Fax +44 1869 238327

**Research Use Only. Not for diagnostic or therapeutic use.**

Storage: For long-term storage keep aliquots at -20°C. (Store no longer than 12 months at 4°C). Minimize freezing and thawing.

## EB05231 - Goat Anti-PPP2R5E Antibody

Size: 100µg specific antibody in 200µl



### Target Protein

**Principal Names:** serine/threonine protein phosphatase 2A, 56 kDa regulatory subunit, epsilon, epsilon isoform of regulatory subunit B56, protein phosphatase 2A, PP2A, B subunit, R5 epsilon, protein phosphatase 2, regulatory subunit B1, epsilon isoform, Serine/threonine protein phosphatase 2A, 56 kDa regulatory subunit, epsilon isoform, PP2A, B subunit, PR61 epsilon isoform, PP2A, B subunit, B56 epsilon isoform, PP2A, B subunit, R5 epsilon isoform, PP2A, B subunit, B1 epsilon isoform, protein phosphatase 2, regulatory subunit B (B56), epsilon isoform, PPP2R5E

**Official Symbol:** PPP2R5E

**Accession Number(s):** NP\_006237.1

**Human GeneID(s):** [5529](#)

### Immunogen

Peptide with sequence C-LKRGLRRDGIPT, from the C Terminus of the protein sequence according to NP\_006237.1.

Please note the [peptide](#) is available for sale.

### Purification and Storage

Purified from goat serum by ammonium sulphate precipitation followed by antigen affinity chromatography using the immunizing peptide.

Supplied at 0.5 mg/ml in Tris saline, 0.02% sodium azide, pH7.3 with 0.5% bovine serum albumin.

Aliquot and store at -20°C. Minimize freezing and thawing.

### Applications Tested

**Peptide ELISA:** antibody detection limit dilution 1:32000.

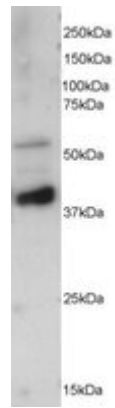
**Western blot:** Approx 55kDa and 40kDa bands seen in mouse brain extracts.

Recommended for use at 0.5-2µg/ml. Please note that the two bands may correspond to two different isoforms. Two isoforms of the epsilon mRNA have been detected in Northern blots (J Biol Chem 1996 Sep 6;271(36):22081-9).

### Species Reactivity

**Tested:** Mouse

**Expected from sequence similarity:** Human, Mouse, Rat, Dog, Cow



EB05231 staining (0.5 $\mu$ g/ml) of mouse brain extracts (RIPA buffer, 35 $\mu$ g total protein per lane). Primary incubated for 1 hour. Detected by western blot using chemiluminescence.