



## UK Office

### Everest Biotech Ltd

Cherwell Innovation Centre  
77 Heyford Park  
Upper Heyford  
Oxfordshire  
OX25 5HD  
UK

Enquiries:

[info@everestbiotech.com](mailto:info@everestbiotech.com)

Sales:

[sales@everestbiotech.com](mailto:sales@everestbiotech.com)

Tech support:

[support@everestbiotech.com](mailto:support@everestbiotech.com)

Tel: +44 (0)1869 238326

Fax: +44 (0)1869 238327

## US Office

### Everest Biotech c/o Abcore

405 Maple Street, Suite A106  
Ramona,  
CA 92065  
USA

Inquiries:

[info@everestbiotech.com](mailto:info@everestbiotech.com)

Sales:

[usasales@everestbiotech.com](mailto:usasales@everestbiotech.com)

Tech support:

[support@everestbiotech.com](mailto:support@everestbiotech.com)

Tel: 888-320-4628 (toll-free)

Fax: 888-841-9041

[www.everestbiotech.com](http://www.everestbiotech.com)

**Research Use Only. Not for  
diagnostic or therapeutic use.**

## EB09395 - Goat Anti-PPP4C Antibody

Size: 100µg specific antibody in 200µl



## Target Protein

**Principal Names:** PPP4C, protein phosphatase 4 (formerly X), catalytic subunit, PP4, PPH3, PPX, Protein phosphatase 4, catalytic subunit

**Official Symbol:** PPP4C

**Accession Number(s):** NP\_002711.1

**Human GeneID(s):** [5531](#)

**Non-Human GeneID(s):** 171366 (rat)

## Immunogen

Peptide with sequence C-PQETRGIPSKKP, from the C Terminus of the protein sequence according to NP\_002711.1.

Please note the [peptide](#) is available for sale.

## Purification and Storage

Purified from goat serum by ammonium sulphate precipitation followed by antigen affinity chromatography using the immunizing peptide.

Supplied at 0.5 mg/ml in Tris saline, 0.02% sodium azide, pH7.3 with 0.5% bovine serum albumin.

Aliquot and store at -20°C. Minimize freezing and thawing.

## Applications Tested

**Peptide ELISA:** antibody detection limit dilution 1:16000.

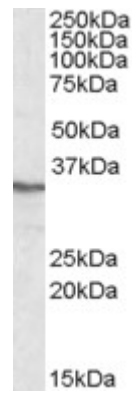
**Western blot:** Approx 35kDa band observed in HEK293, A431 and HeLa lysates and in Rat Spleen and Lung lysates (calculated MW of 35.1kDa according to NP\_002711.1).  
Recommended concentration: 0.1-0.3µg/ml.

**IHC:** In paraffin embedded Human Prostate shows nuclear staining of secretory cells in the gland. Recommended concentration, 2-4µg/ml.

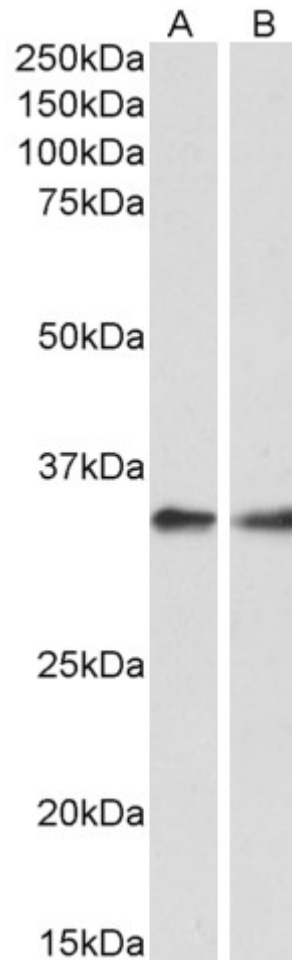
## Species Reactivity

**Tested:** Human, Rat

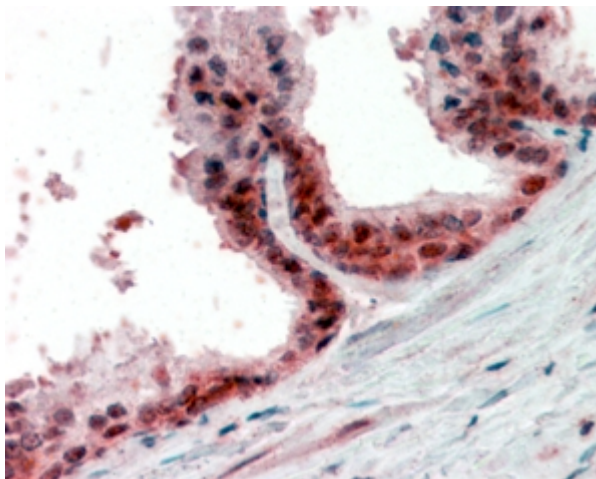
**Expected from sequence similarity:** Human, Rat, Dog



EB09395 (0.3 $\mu$ g/ml) staining of HEK293 lysate (35 $\mu$ g protein in RIPA buffer). Primary incubation was 1 hour. Detected by chemiluminescence.



EB09395 (0.3 $\mu$ g/ml) staining of Rat Spleen (A) and Lung (B) lysate (35 $\mu$ g protein in RIPA buffer). Primary incubation was 1 hour. Detected by chemiluminescence.



EB09395 (2.5µg/ml) staining of paraffin embedded Human Prostate. Steamed antigen retrieval with citrate buffer pH 6, AP-staining.