



UK Office

Everest Biotech Ltd

Cherwell Innovation Centre
77 Heyford Park
Upper Heyford
Oxfordshire
OX25 5HD
UK

Enquiries:

info@everestbiotech.com

Sales:

sales@everestbiotech.com

Tech support:

support@everestbiotech.com

Tel: +44 (0)1869 238326

Fax: +44 (0)1869 238327

US Office

Everest Biotech c/o Abcore

405 Maple Street, Suite A106
Ramona,
CA 92065
USA

Inquiries:

info@everestbiotech.com

Sales:

usasales@everestbiotech.com

Tech support:

support@everestbiotech.com

Tel: 888-320-4628 (toll-free)

Fax: 888-841-9041

www.everestbiotech.com

**Research Use Only. Not for
diagnostic or therapeutic use.**

EB10762 - Goat Anti-PRDM14 (aa533-544) Antibody

Size: 100µg specific antibody in 200µl



Target Protein

Principal Names: PRDM14, PR domain containing 14, MGC59730, PFM11, PR domain zinc finger protein 14, PR domain-containing protein 14, PR-domain zinc finger protein 14

Official Symbol: PRDM14

Accession Number(s): NP_078780.1

Human GeneID(s): [63978](#)

Non-Human GeneID(s): 383491 (mouse), 100365184 (rat)

Immunogen

Peptide with sequence C-DSHVRRSHKEDD, from the internal region of the protein sequence according to NP_078780.1.

Please note the [peptide](#) is available for sale.

Purification and Storage

Purified from goat serum by ammonium sulphate precipitation followed by antigen affinity chromatography using the immunizing peptide.

Supplied at 0.5 mg/ml in Tris saline, 0.02% sodium azide, pH7.3 with 0.5% bovine serum albumin.

Aliquot and store at -20°C. Minimize freezing and thawing.

Applications Tested

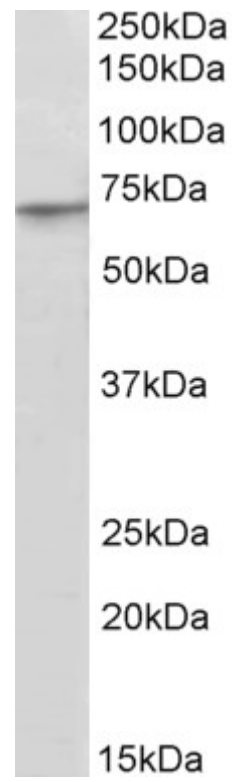
Peptide ELISA: antibody detection limit dilution 1:2000.

Western blot: Approx 70kDa band observed in lysates of cell line A549 (calculated MW of 64.1kDa according to NP_078780.1). Recommended concentration: 1-3µg/ml.

Species Reactivity

Tested: Human

Expected from sequence similarity: Human, Mouse, Rat, Dog, Pig, Cow



EB10762 (2 μ g/ml) staining of A549 lysate (35 μ g protein in RIPA buffer). Primary incubation was 1 hour.
Detected by chemiluminescence.