



UK Office

Everest Biotech Ltd

Cherwell Innovation Centre
77 Heyford Park
Upper Heyford
Oxfordshire
OX25 5HD
UK

Enquiries:

info@everestbiotech.com

Sales:

sales@everestbiotech.com

Tech support:

support@everestbiotech.com

Tel: +44 (0)1869 238326

Fax: +44 (0)1869 238327

US Office

Everest Biotech c/o Abcore

405 Maple Street, Suite A106
Ramona,
CA 92065
USA

Inquiries:

info@everestbiotech.com

Sales:

usasales@everestbiotech.com

Tech support:

support@everestbiotech.com

Tel: 888-320-4628 (toll-free)

Fax: 888-841-9041

www.everestbiotech.com

**Research Use Only. Not for
diagnostic or therapeutic use.**

EB10269 - Goat Anti-PRKAA2 Antibody

Size: 100µg specific antibody in 200µl



Target Protein

Principal Names: 5'-AMP-activated protein kinase, catalytic alpha-2 chain, AMP-activated protein kinase alpha 2 catalytic subunit, AMPK, AMPK2, AMPK-alpha-2 chain, PRKAA, protein kinase, AMP-activated, alpha 2 catalytic subunit, PRKAA2

Official Symbol: PRKAA2

Accession Number(s): NP_006243.2

Human GeneID(s): [5563](#)

Non-Human GeneID(s): 108079 (mouse), 78975 (rat)

Immunogen

Peptide with sequence CPLDALNTTKP, from the internal region of the protein sequence according to NP_006243.2.

Please note the [peptide](#) is available for sale.

Purification and Storage

Purified from goat serum by ammonium sulphate precipitation followed by antigen affinity chromatography using the immunizing peptide.

Supplied at 0.5 mg/ml in Tris saline, 0.02% sodium azide, pH7.3 with 0.5% bovine serum albumin.

Aliquot and store at -20°C. Minimize freezing and thawing.

Applications Tested

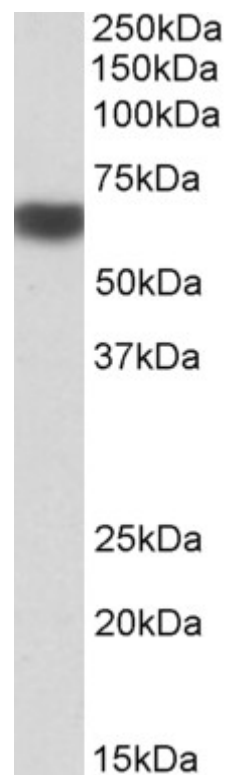
Peptide ELISA: antibody detection limit dilution 1:16000.

Western blot: Approx 65kDa band observed in Human Heart and Liver lysates and in Mouse and Rat Heart lysates (calculated MW of 62.3kDa according to NP_006243.2). Recommended concentration: 0.3-1µg/ml. Primary incubation was 1 hour.

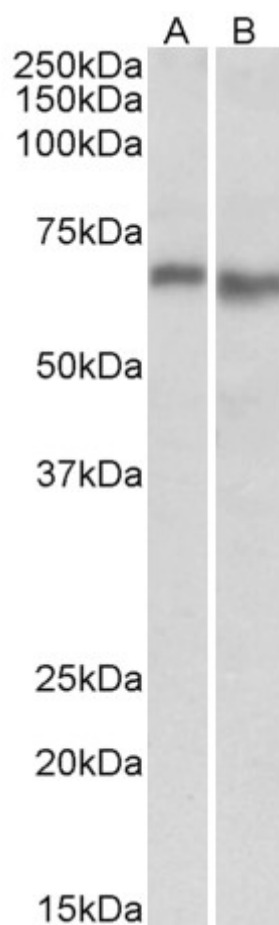
Species Reactivity

Tested: Human, Mouse, Rat

Expected from sequence similarity: Human, Mouse, Rat, Dog, Pig, Cow



EB10269 (1 μ g/ml) staining of Human Liver lysate (35 μ g protein in RIPA buffer). Detected by chemiluminescence.



EB10269 (0.3 μ g/ml) staining of Mouse (A) and Rat (B) Heart lysate (35 μ g protein in RIPA buffer). Detected by chemiluminescence.