



International Office

Everest Biotech Ltd

Vector Laboratories, Inc.
6737 Mowry Ave
Newark, CA 94560
United States

Customer Service:

customerservice@vectorlabs.com

Technical Service:

technical@vectorlabs.com

Tel: +1 (800) 227-6666

www.everestbiotech.com

**Research Use Only. Not for
diagnostic or therapeutic use.**

EB12864 - Goat Anti-PRKACA Antibody

Size: 100µg specific antibody in 200µl



Target Protein

Principal Names: PRKACA, protein kinase, cAMP-dependent, catalytic, alpha, PKACA, PPNAD4, PKA C-alpha, cAMP-dependent protein kinase catalytic subunit alpha, protein kinase A catalytic subunit

Official Symbol: PRKACA

Accession Number(s): NP_002721.1; NP_997401.1; NP_001291278.1

Human GeneID(s): [5566](#)

Important Comments: This antibody is expected to recognize all three reported isoforms (NP_002721.1; NP_997401.1; NP_001291278.1). Based on the choice of the immunizing peptide there is no expected cross-reactivity with the other subunits.

Immunogen

Peptide with sequence C-ESPAQNTAHLQ, from the internal region (near N Terminus) of the protein sequence according to NP_002721.1; NP_997401.1; NP_001291278.1.

Please note the [peptide](#) is available for sale.

Purification and Storage

Purified from goat serum by ammonium sulphate precipitation followed by antigen affinity chromatography using the immunizing peptide.

Supplied at 0.5 mg/ml in Tris saline, 0.02% sodium azide, pH7.3 with 0.5% bovine serum albumin.

Aliquot and store at -20°C. Minimize freezing and thawing.

Applications Tested

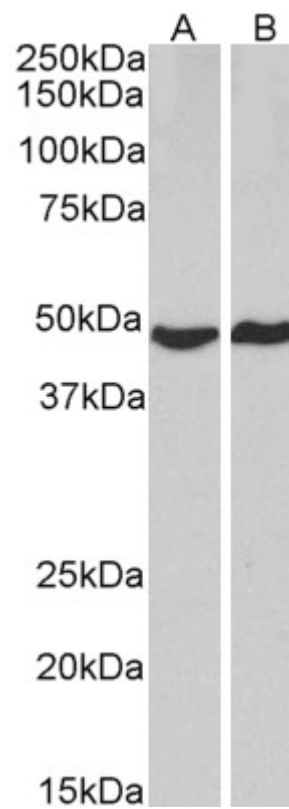
Peptide ELISA: antibody detection limit dilution 1:8000.

Western blot: Approx 48kDa band observed in lysates of cell line HeLa and MCF7 (calculated MW of 49.1kDa according to NP_002721.1). Recommended concentration: 1-3µg/ml.

Species Reactivity

Tested: Human

Expected from sequence similarity: Human



EB12864 (2 μ g/ml) staining of HeLa (A) and MCF7 (B) lysates (35 μ g protein in RIPA buffer). Primary incubation was 1 hour. Detected by chemiluminescence.