

UK Office

Everest Biotech Ltd

Cherwell Innovation Centre
77 Heyford Park
Upper Heyford
Oxfordshire
OX25 5HD
UK

Enquiries:

info@everestbiotech.com

Sales:

sales@everestbiotech.com

Tech support:

support@everestbiotech.com

Tel: +44 (0)1869 238326

Fax: +44 (0)1869 238327

US Office

Everest Biotech c/o Abcore

405 Maple Street, Suite A106
Ramona,
CA 92065
USA

Inquiries:

info@everestbiotech.com

Sales:

usasales@everestbiotech.com

Tech support:

support@everestbiotech.com

Tel: 888-320-4628 (toll-free)

Fax: 888-841-9041

www.everestbiotech.com

**Research Use Only. Not for
diagnostic or therapeutic use.**

EB11585 - Goat Anti-PRKCB Antibody

Size: 100µg specific antibody in 200µl



Target Protein

Principal Names: MGC41878, OTTHUMP00000162377, OTTHUMP00000162378, PKCB, PKC-B, PKC-beta, PRKCB, PRKCB1, PRKCB2, protein kinase C beta type, protein kinase C, beta, protein kinase C, beta 1 polypeptide

Official Symbol: PRKCB

Accession Number(s): NP_997700.1

Human GeneID(s): [5579](#)

Important Comments: This antibody is expected to recognize isoform 1 (NP_997700.1) only.

Immunogen

Peptide with sequence C-DKEFTRQPVELT, from the internal region (near C terminus) of the protein sequence according to NP_997700.1.

Please note the [peptide](#) is available for sale.

Purification and Storage

Purified from goat serum by ammonium sulphate precipitation followed by antigen affinity chromatography using the immunizing peptide.

Supplied at 0.5 mg/ml in Tris saline, 0.02% sodium azide, pH7.3 with 0.5% bovine serum albumin.

Aliquot and store at -20°C. Minimize freezing and thawing.

Applications Tested

Peptide ELISA: antibody detection limit dilution 1:128000.

Western blot: Approx 80kDa band observed in lysates of Human Placenta and Rat Brain (calculated MW of 76.9kDa according to NP_997700.1). Recommended concentration: 0.1-0.3µg/ml.

IHC: In paraffin embedded Human Spleen shows nucleolar staining in some splenocytes. Recommended concentration, 1-2µg/ml.

Additional validation: This antibody has been successfully used in the following paper: Sikorski et al. (2018) PMID: 30377371.

Species Reactivity

Tested: Human, Rat

Expected from sequence similarity: Human, Rat, Dog

Specific Reference

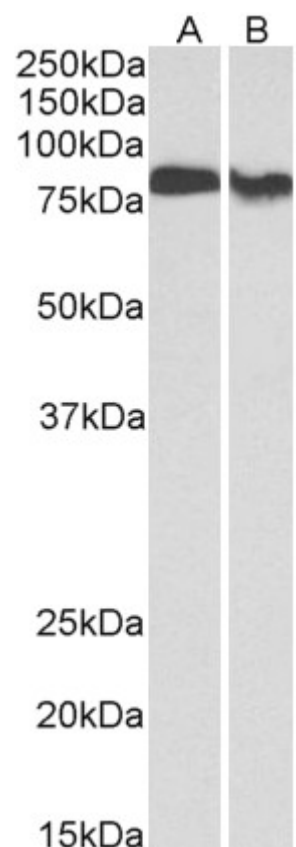
This antibody has been successfully used in the following paper:

Krzysztof Sikorski, Adi Mehta, Marit Inngjerdengen, Flourina Thakor, Simon Kling, Tomas Kalina, Tuula A. Nyman, Maria Ekman Stensland, Wei Zhou, Gustavo A. De Souza, Lars Holden, Jan Stuchly, Markus Templin and Fridtjof Lund-Johansen

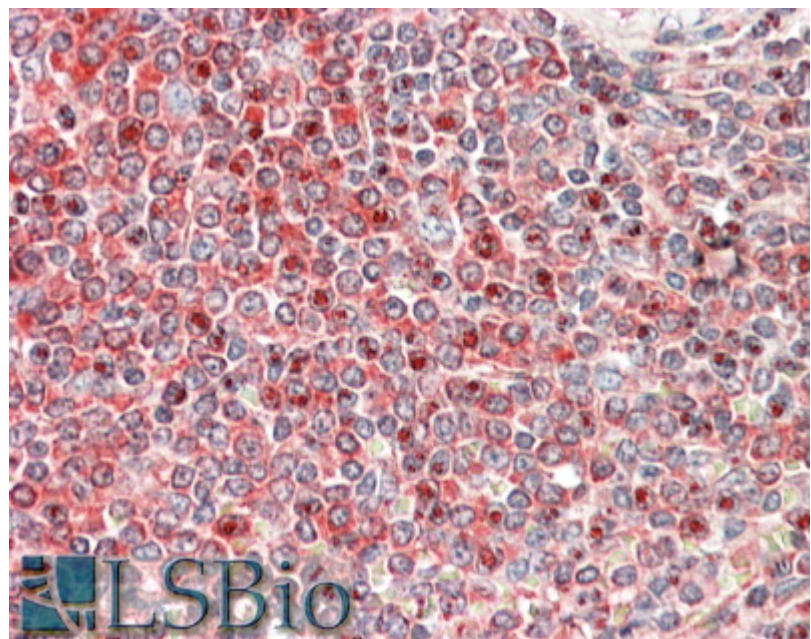
A high-throughput pipeline for validation of antibodies

Nat Methods. 2018 Nov;15(11):909-912

PMID: 30377371



EB11585 (0.3µg/ml) staining of Human Placenta (A) and Rat Brain (B) lysates (35µg protein in RIPA buffer). Primary incubation was 1 hour. Detected by chemiluminescence.



EB11585 (5µg/ml) staining of paraffin embedded Human Spleen. Steamed antigen retrieval with citrate buffer pH 6, AP-staining.