



## UK Office

### Everest Biotech Ltd

Cherwell Innovation Centre  
77 Heyford Park  
Upper Heyford  
Oxfordshire  
OX25 5HD  
UK

Enquiries:

[info@everestbiotech.com](mailto:info@everestbiotech.com)

Sales:

[sales@everestbiotech.com](mailto:sales@everestbiotech.com)

Tech support:

[support@everestbiotech.com](mailto:support@everestbiotech.com)

Tel: +44 (0)1869 238326

[www.everestbiotech.com](http://www.everestbiotech.com)

**Research Use Only. Not for  
diagnostic or therapeutic use.**

## EB11585-B - Goat Anti-PRKCB, Biotinylated Antibody

Size: 100µg specific antibody in 200µl



### Target Protein

**Principal Names:** MGC41878, OTTHUMP00000162377, OTTHUMP00000162378, PKCB, PKC-B, PKC-beta, PRKCB, PRKCB1, PRKCB2, protein kinase C beta type, protein kinase C, beta, protein kinase C, beta 1 polypeptide

**Official Symbol:** PRKCB

**Accession Number(s):** NP\_997700.1

**Human GeneID(s):** [5579](#)

**Important Comments:** This antibody is expected to recognize isoform 1 (NP\_997700.1) only.

### Immunogen

Peptide with sequence C-DKEFTRQPVELT., from the internal region (near C terminus) of the protein sequence according to NP\_997700.1.

Please note the [peptide](#) is available for sale.

### Purification and Storage

Purified from goat serum by ammonium sulphate precipitation followed by antigen affinity chromatography using the immunizing peptide.

Supplied at 0.5 mg/ml in Tris saline, 0.02% sodium azide, pH7.3 with 0.5% bovine serum albumin.

Aliquot and store at -20°C. Minimize freezing and thawing.

### Applications Tested

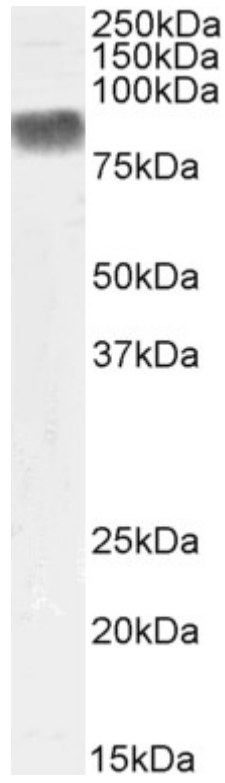
**Peptide ELISA:** antibody detection limit dilution 1:128000.

**Western blot:** Approx 80kDa band observed in lysates of Human Placenta (calculated MW of 76.9kDa according to NP\_997700.1). Recommended concentration: 0.1-0.3µg/ml.

### Species Reactivity

**Tested:** Human

**Expected from sequence similarity:** Human, Rat, Dog



Biotinylated EB11585 (0.3ug/ml) staining of Human Placenta lysate (35µg protein in RIPA buffer). Primary incubation was 1 hour. Detected by chemiluminescence, using streptavidin-HRP and using NAP blocker as a substitute for skimmed milk.