



## UK Office

### Everest Biotech Ltd

Cherwell Innovation Centre  
77 Heyford Park  
Upper Heyford  
Oxfordshire  
OX25 5HD  
UK

Enquiries:

[info@everestbiotech.com](mailto:info@everestbiotech.com)

Sales:

[sales@everestbiotech.com](mailto:sales@everestbiotech.com)

Tech support:

[support@everestbiotech.com](mailto:support@everestbiotech.com)

Tel: +44 (0)1869 238326

Fax: +44 (0)1869 238327

## US Office

### Everest Biotech c/o Abcore

405 Maple Street, Suite A106  
Ramona,  
CA 92065  
USA

Inquiries:

[info@everestbiotech.com](mailto:info@everestbiotech.com)

Sales:

[usasales@everestbiotech.com](mailto:usasales@everestbiotech.com)

Tech support:

[support@everestbiotech.com](mailto:support@everestbiotech.com)

Tel: 888-320-4628 (toll-free)

Fax: 888-841-9041

[www.everestbiotech.com](http://www.everestbiotech.com)

**Research Use Only. Not for  
diagnostic or therapeutic use.**

## EB12885 - Goat Anti-PRKD1 (aa233-246) Antibody

Size: 100µg specific antibody in 200µl



### Target Protein

**Principal Names:** PRKD1, PKC-MU, PKCM, PKD, PRKCM;

**Official Symbol:** PRKD1

**Accession Number(s):** NP\_002733.2

**Human GeneID(s):** [5587](#)

**Non-Human GeneID(s):** 18760 (mouse), 85421 (rat)

### Immunogen

Peptide with sequence C-QKSPSEFIGREKR, from the internal region of the protein sequence according to NP\_002733.2.

Please note the [peptide](#) is available for sale.

### Purification and Storage

Purified from goat serum by ammonium sulphate precipitation followed by antigen affinity chromatography using the immunizing peptide.

Supplied at 0.5 mg/ml in Tris saline, 0.02% sodium azide, pH7.3 with 0.5% bovine serum albumin.

Aliquot and store at -20°C. Minimize freezing and thawing.

### Applications Tested

**Peptide ELISA:** antibody detection limit dilution 1:128000.

**Western blot:** In transfected HEK293 transiently expressing Human PKD1 (DYKDDDDK tagged), a band of approx. 100kDa is observed. The same band is observed using anti-DYKDDDDK antibody and no bands are observed in cells transiently expressing Human PKD2 or PKD3. Recommended concentration 0.1-0.3ug/ml

**IHC:** This antibody has been confirmed in human pancreatic adenocarcinoma (PDA) according to Döppler et al, Sci Rep. 2016 Sep 21;6:33758 PMID 27649783.

**Immunoprecipitation:** PKD1 was immunoprecipitated from Hek293T cells (as above). Immunoprecipitates were analyzed by Western Blot probed with the same antibody.

### Species Reactivity

**Tested:** Human

**Expected from sequence similarity:** Human, Mouse, Rat, Pig

### Specific Reference

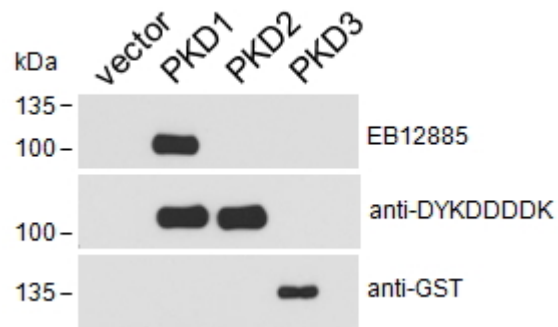
**This antibody has been successfully used in the following paper:**

Döppler H, Panayiotou R, Reid EM, Maimo W, Bastea L, Storz P.

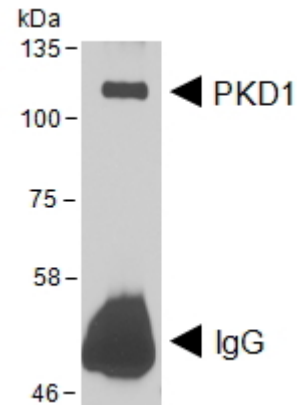
The PRKD1 promoter is a target of the Kras-NF-κB pathway in pancreatic cancer.

Sci Rep. 2016 Sep 21;6:33758.

PMID: 27649783



HEK293 lysate overexpressing Human DYKDDDDK-tagged PKD1, Human DYKDDDDK-tagged PKD2 or Human GST-tagged PKD3 probed with EB12885 (0.1ug/ml) in top panel, probed with anti-DYKDDDDK in middle panel and probed with anti-GST in bottom panel. Data kindly obtained from Dr Peter Storz, Mayo Clinic, USA.



HEK293 lysate overexpressing Human DYKDDDDK-tagged PKD1 was used to immunoprecipitate PKD1 with 2ug EB12885. The precipitate was subsequently probed in Western blot using EB12885 at 1ug/ml. The secondary anti-goat picks up the heavy chain of EB12885 used for the immunoprecipitation (annotated as IgG). Data kindly obtained from Dr Peter Storz, Mayo Clinic, USA