



Everest Biotech Ltd  
Cherwell Innovation Centre  
77 Heyford Park  
Upper Heyford  
Oxfordshire  
OX25 5HD, United Kingdom

[everestbiotech.com](http://everestbiotech.com)

[sales@everestbiotech.com](mailto:sales@everestbiotech.com)

[support@everestbiotech.com](mailto:support@everestbiotech.com)

Tel +44 1869 238326

Fax +44 1869 238327

**Research Use Only. Not for diagnostic or therapeutic use.**

Storage: For long-term storage keep aliquots at -20°C. (Store no longer than 12 months at 4°C). Minimize freezing and thawing.

## EB05302 - Goat Anti-PRL3 / PTP4A3 Antibody

Size: 100µg specific antibody in 200µl



### Target Protein

**Principal Names:** potentially prenylated protein tyrosine phosphatase, PRL-R, PRL-3, protein tyrosine phosphatase type IVA, member 3, PRL3, PTP4A3

**Official Symbol:** PTP4A3

**Accession Number(s):** NP\_009010.2; NP\_116000.1

**Human GeneID(s):** [11156](#)

**Non-Human GeneID(s):** 19245 (mouse)

**Important Comments:** This antibody is expected to recognise both reported isoforms (NP\_009010.2 and NP\_116000.1).

### Immunogen

Peptide with sequence NRPAPVEVSYKHMR-C, from the N Terminus of the protein sequence according to NP\_009010.2; NP\_116000.1.

Please note the [peptide](#) is available for sale.

### Purification and Storage

Purified from goat serum by ammonium sulphate precipitation followed by antigen affinity chromatography using the immunizing peptide.

Supplied at 0.5 mg/ml in Tris saline, 0.02% sodium azide, pH7.3 with 0.5% bovine serum albumin.

Aliquot and store at -20°C. Minimize freezing and thawing.

### Applications Tested

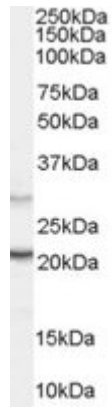
**Peptide ELISA:** antibody detection limit dilution 1:64000.

**Western blot:** Approx 22kDa band observed in Human Pancreas lysates (calculated MW of 19.5Da according to NP\_116000.1). Recommended concentration: 0.03-0.1µg/ml.

### Species Reactivity

**Tested:** Human

**Expected from sequence similarity:** Human, Mouse, Rat



EB05302 staining (0.03 $\mu$ g/ml) of Human Pancreas lysate (RIPA buffer, 30 $\mu$ g total protein per lane). Primary incubated for 1 hour. Detected by western blot using chemiluminescence.