

## UK Office

### Everest Biotech Ltd

Cherwell Innovation Centre  
77 Heyford Park  
Upper Heyford  
Oxfordshire  
OX25 5HD  
UK

Enquiries:

[info@everestbiotech.com](mailto:info@everestbiotech.com)

Sales:

[sales@everestbiotech.com](mailto:sales@everestbiotech.com)

Tech support:

[support@everestbiotech.com](mailto:support@everestbiotech.com)

Tel: +44 (0)1869 238326

[www.everestbiotech.com](http://www.everestbiotech.com)

**Research Use Only. Not for  
diagnostic or therapeutic use.**

## EB11558 - Goat Anti-PRMT2 Antibody

Size: 100µg specific antibody in 200µl



### Target Protein

**Principal Names:** histone-arginine N-methyltransferase PRMT2, HMT1 (hnRNP methyltransferase, *S. cerevisiae*)-like 1, HMT1 hnRNP methyltransferase-like 1, HRMT1L1, MGC111373, OTTHUMP00000046525, OTTHUMP00000046526, OTTHUMP00000115881, OTTHUMP00000115882, OTTHUMP00000115884, OTTHUMP00000207831, PRMT2, PRMT2 alpha, PRMT2 beta, PRMT2 gamma, protein arginine methyltransferase 2, protein arginine N-methyltransferase 2

**Official Symbol:** PRMT2

**Accession Number(s):** NP\_001526.2; NP\_001229793.1; NP\_001229794.1; NP\_001229795.1

**Human GeneID(s):** [3275](#)

**Non-Human GeneID(s):** 15468 (mouse), 499420 (rat)

**Important Comments:** This antibody is expected to recognize all reported isoforms (NP\_001526.2; NP\_001229793.1; NP\_001229794.1; NP\_001229795.1). Reported variants represent identical protein: NP\_001526.2, NP\_996845.1

### Immunogen

Peptide with sequence C-DQPRRTTKYHSVILQ, from the internal region of the protein sequence according to NP\_001526.2; NP\_001229793.1; NP\_001229794.1; NP\_001229795.1.

Please note the [peptide](#) is available for sale.

### Purification and Storage

Purified from goat serum by ammonium sulphate precipitation followed by antigen affinity chromatography using the immunizing peptide.

Supplied at 0.5 mg/ml in Tris saline, 0.02% sodium azide, pH7.3 with 0.5% bovine serum albumin.

Aliquot and store at -20°C. Minimize freezing and thawing.

### Applications Tested

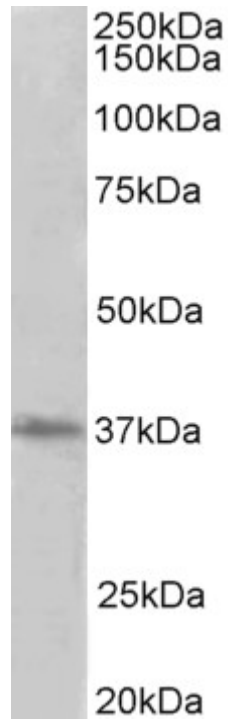
**Peptide ELISA:** antibody detection limit dilution 1:64000.

**Western blot:** Approx 37kDa band observed in lysates of cell line HeLa and in rodent Brain lysates (calculated MW of 37.2kDa according to NP\_001229793.1). Approx 35kDa band observed in Pig Brain lysates (calculated MW of 38.7kDa according to XP\_005658963.1). Recommended concentration: 1-3µg/ml.

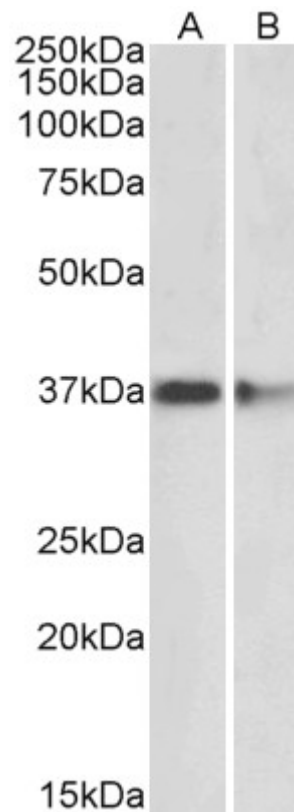
### Species Reactivity

**Tested:** Human, Mouse, Rat, Pig

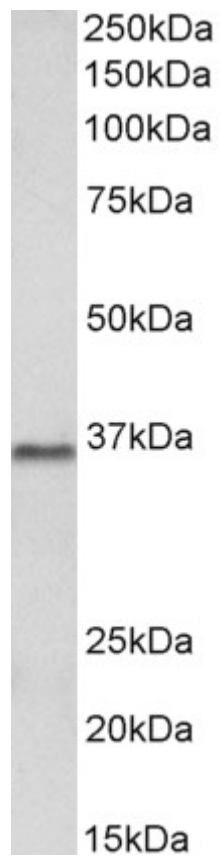
**Expected from sequence similarity:** Human, Mouse, Rat, Pig, Cow



EB11558 (2 $\mu$ g/ml) staining of HeLa lysate (35 $\mu$ g protein in RIPA buffer). Primary incubation was 1 hour. Detected by chemiluminescence.



EB11558 (2 $\mu$ g/ml) staining of Mouse (A) and Rat (B) Brain lysates (35 $\mu$ g protein in RIPA buffer). Primary incubation was 1 hour. Detected by chemiluminescence.



EB11558 (2 $\mu$ g/ml) staining of Pig Brain lysate (35 $\mu$ g protein in RIPA buffer). Primary incubation was 1 hour.  
Detected by chemiluminescence.