



UK Office

Everest Biotech Ltd

Cherwell Innovation Centre
77 Heyford Park
Upper Heyford
Oxfordshire
OX25 5HD
UK

Enquiries:

info@everestbiotech.com

Sales:

sales@everestbiotech.com

Tech support:

support@everestbiotech.com

Tel: +44 (0)1869 238326

Fax: +44 (0)1869 238327

US Office

Everest Biotech c/o Abcore

405 Maple Street, Suite A106
Ramona,
CA 92065
USA

Inquiries:

info@everestbiotech.com

Sales:

usasales@everestbiotech.com

Tech support:

support@everestbiotech.com

Tel: 888-320-4628 (toll-free)

Fax: 888-841-9041

www.everestbiotech.com

**Research Use Only. Not for
diagnostic or therapeutic use.**

EB11558 - Goat Anti-PRMT2 Antibody

Size: 100µg specific antibody in 200µl



Target Protein

Principal Names: histone-arginine N-methyltransferase PRMT2, HMT1 (hnRNP methyltransferase, *S. cerevisiae*)-like 1, HMT1 hnRNP methyltransferase-like 1, HRMT1L1, MGC111373, OTTHUMP00000046525, OTTHUMP00000046526, OTTHUMP00000115881, OTTHUMP00000115882, OTTHUMP00000115884, OTTHUMP00000207831, PRMT2, PRMT2 alpha, PRMT2 beta, PRMT2 gamma, protein arginine methyltransferase 2, protein arginine N-methyltransferase 2

Official Symbol: PRMT2

Accession Number(s): NP_001526.2; NP_001229793.1; NP_001229794.1; NP_001229795.1

Human GeneID(s): [3275](#)

Non-Human GeneID(s): 15468 (mouse), 499420 (rat)

Important Comments: This antibody is expected to recognize all reported isoforms (NP_001526.2; NP_001229793.1; NP_001229794.1; NP_001229795.1). Reported variants represent identical protein: NP_001526.2, NP_996845.1

Immunogen

Peptide with sequence C-DQPRRTTKYHSVILQ, from the internal region of the protein sequence according to NP_001526.2; NP_001229793.1; NP_001229794.1; NP_001229795.1.

Please note the [peptide](#) is available for sale.

Purification and Storage

Purified from goat serum by ammonium sulphate precipitation followed by antigen affinity chromatography using the immunizing peptide.

Supplied at 0.5 mg/ml in Tris saline, 0.02% sodium azide, pH7.3 with 0.5% bovine serum albumin.

Aliquot and store at -20°C. Minimize freezing and thawing.

Applications Tested

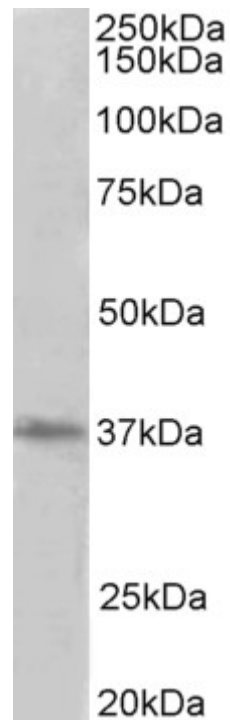
Peptide ELISA: antibody detection limit dilution 1:64000.

Western blot: Approx 37kDa band observed in lysates of cell line HeLa and in rodent Brain lysates (calculated MW of 37.2kDa according to NP_001229793.1). Approx 35kDa band observed in Pig Brain lysates (calculated MW of 38.7kDa according to XP_005658963.1). Recommended concentration: 1-3µg/ml.

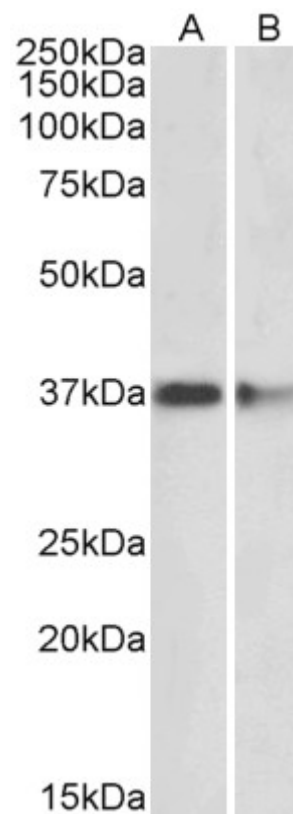
Species Reactivity

Tested: Human, Mouse, Rat, Pig

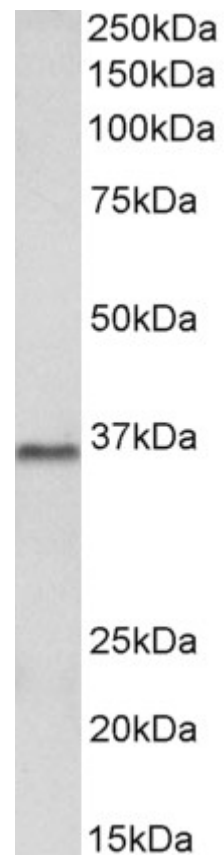
Expected from sequence similarity: Human, Mouse, Rat, Pig, Cow



EB11558 (2 μ g/ml) staining of HeLa lysate (35 μ g protein in RIPA buffer). Primary incubation was 1 hour. Detected by chemiluminescence.



EB11558 (2 μ g/ml) staining of Mouse (A) and Rat (B) Brain lysates (35 μ g protein in RIPA buffer). Primary incubation was 1 hour. Detected by chemiluminescence.



EB11558 (2 μ g/ml) staining of Pig Brain lysate (35 μ g protein in RIPA buffer). Primary incubation was 1 hour.
Detected by chemiluminescence.