



UK Office

Everest Biotech Ltd

Cherwell Innovation Centre
77 Heyford Park
Upper Heyford
Oxfordshire
OX25 5HD
UK

Enquiries:

info@everestbiotech.com

Sales:

sales@everestbiotech.com

Tech support:

support@everestbiotech.com

Tel: +44 (0)1869 238326

Fax: +44 (0)1869 238327

US Office

Everest Biotech c/o Abcore

405 Maple Street, Suite A106
Ramona,
CA 92065
USA

Inquiries:

info@everestbiotech.com

Sales:

usasales@everestbiotech.com

Tech support:

support@everestbiotech.com

Tel: 888-320-4628 (toll-free)

Fax: 888-841-9041

www.everestbiotech.com

**Research Use Only. Not for
diagnostic or therapeutic use.**

EB11556 - Goat Anti-PRMT3 (aa468-421) Antibody

Size: 100µg specific antibody in 200µl



Target Protein

Principal Names: heterogeneous nuclear ribonucleoprotein methyltransferase-like 3, heterogeneous nuclear ribonucleoprotein methyltransferase-like protein 3, HMT1 hnRNP methyltransferase-like 3, HRMT1L3, OTTHUMP00000231732, OTTHUMP00000231735, PRMT3, protein arginine methyltransferase 3, protein arginine N-methyltransferase 3

Official Symbol: PRMT3

Accession Number(s): NP_005779.1; NP_001138638.1; NP_001138639.1

Human GeneID(s): [10196](#)

Important Comments: This antibody is expected to recognize all reported isoforms (NP_005779.1; NP_001138638.1; NP_001138639.1).

Immunogen

Peptide with sequence DPKTLISEPCGIKH, from the internal region of the protein sequence according to NP_005779.1; NP_001138638.1; NP_001138639.1.

Please note the [peptide](#) is available for sale.

Purification and Storage

Purified from goat serum by ammonium sulphate precipitation followed by antigen affinity chromatography using the immunizing peptide.

Supplied at 0.5 mg/ml in Tris saline, 0.02% sodium azide, pH7.3 with 0.5% bovine serum albumin.

Aliquot and store at -20°C. Minimize freezing and thawing.

Applications Tested

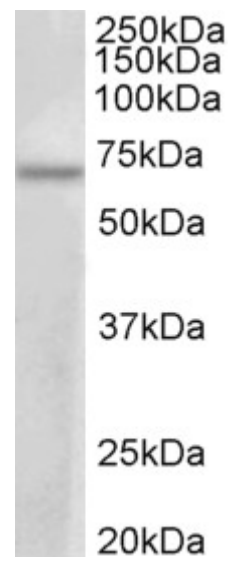
Peptide ELISA: antibody detection limit dilution 1:16000.

Western blot: Approx 70kDa band observed in lysates of cell line MCF7 (calculated MW of 59.9kDa according to NP_005779.1). The observed molecular weight corresponds to earlier findings in literature with different antibodies (Swiercz et al, J Biol Chem. 2007 Jun 8;282(23):16917-23. PMID: 17439947). Recommended concentration: 1-3µg/ml.

Species Reactivity

Tested: Human

Expected from sequence similarity: Human



EB11556 (1 μ g/ml) staining of MCF7 lysate (35 μ g protein in RIPA buffer). Primary incubation was 1 hour.
Detected by chemiluminescence.