



UK Office

Everest Biotech Ltd

Cherwell Innovation Centre
77 Heyford Park
Upper Heyford
Oxfordshire
OX25 5HD
UK

Enquiries:

info@everestbiotech.com

Sales:

sales@everestbiotech.com

Tech support:

support@everestbiotech.com

Tel: +44 (0)1869 238326

Fax: +44 (0)1869 238327

US Office

Everest Biotech c/o Abcore

405 Maple Street, Suite A106
Ramona,
CA 92065
USA

Inquiries:

info@everestbiotech.com

Sales:

usasales@everestbiotech.com

Tech support:

support@everestbiotech.com

Tel: 888-320-4628 (toll-free)

Fax: 888-841-9041

www.everestbiotech.com

**Research Use Only. Not for
diagnostic or therapeutic use.**

EB11561 - Goat Anti-PRMT6 Antibody

Size: 100µg specific antibody in 200µl



Target Protein

Principal Names: FLJ10559, FLJ51477, heterogeneous nuclear ribonucleoprotein methyltransferase-like protein 6, histone-arginine N-methyltransferase PRMT6, HMT1 hnRNP methyltransferase-like 6, HRMT1L6, OTTHUMP00000012633, PRMT6, protein arginine methyltransferase 6, protein arginine N-methyltransferase 6

Official Symbol: PRMT6

Accession Number(s): NP_060607.2

Human GeneID(s): [55170](#)

Non-Human GeneID(s): 99890 (mouse), 295384 (rat)

Immunogen

Peptide with sequence ERDQLYYECYSD, from the internal region of the protein sequence according to NP_060607.2.

Please note the [peptide](#) is available for sale.

Purification and Storage

Purified from goat serum by ammonium sulphate precipitation followed by antigen affinity chromatography using the immunizing peptide.

Supplied at 0.5 mg/ml in Tris saline, 0.02% sodium azide, pH7.3 with 0.5% bovine serum albumin.

Aliquot and store at -20°C. Minimize freezing and thawing.

Applications Tested

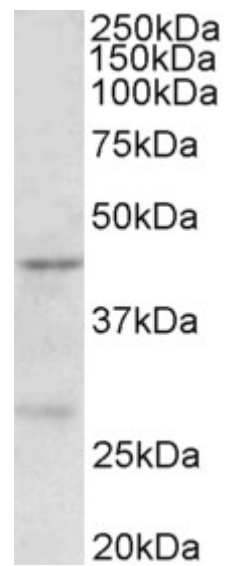
Peptide ELISA: antibody detection limit dilution 1:128000.

Western blot: Approx 45kDa band observed in lysates of cell line MCF7 (calculated MW of 41.9kDa according to NP_060607.2). Recommended concentration: 0.5-2µg/ml.

Species Reactivity

Tested: Human

Expected from sequence similarity: Human, Mouse, Rat, Pig



EB11561 (0.5µg/ml) staining of MCF7 lysate (35µg protein in RIPA buffer). Primary incubation was 1 hour.
Detected by chemiluminescence.