



## UK Office

### Everest Biotech Ltd

Cherwell Innovation Centre  
77 Heyford Park  
Upper Heyford  
Oxfordshire  
OX25 5HD  
UK

Enquiries:

[info@everestbiotech.com](mailto:info@everestbiotech.com)

Sales:

[sales@everestbiotech.com](mailto:sales@everestbiotech.com)

Tech support:

[support@everestbiotech.com](mailto:support@everestbiotech.com)

Tel: +44 (0)1869 238326

Fax: +44 (0)1869 238327

## US Office

### Everest Biotech c/o Abcore

405 Maple Street, Suite A106  
Ramona,  
CA 92065  
USA

Inquiries:

[info@everestbiotech.com](mailto:info@everestbiotech.com)

Sales:

[usasales@everestbiotech.com](mailto:usasales@everestbiotech.com)

Tech support:

[support@everestbiotech.com](mailto:support@everestbiotech.com)

Tel: 888-320-4628 (toll-free)

Fax: 888-841-9041

[www.everestbiotech.com](http://www.everestbiotech.com)

**Research Use Only. Not for  
diagnostic or therapeutic use.**

## EB11752 - Goat Anti-Pro-EGF Antibody

Size: 100µg specific antibody in 200µl



### Target Protein

**Principal Names:** beta-urogastrone, EGF, epidermal growth factor, HOMG4, OTTHUMP00000162922, OTTHUMP00000219721, OTTHUMP00000219722, pro-epidermal growth factor, URG

**Official Symbol:** EGF

**Accession Number(s):** NP\_001954.2; NP\_001171601.1; NP\_001171602.1

**Human GeneID(s):** [1950](#)

**Important Comments:** This antibody is expected to recognize all reported isoforms (NP\_001954.2; NP\_001171601.1; NP\_001171602.1), but not the mature form. The immunizing peptide represents part of the extracellular domain.

### Immunogen

Peptide with sequence SRQERVCNIEKNVS, from the internal region (near the N terminus) of the protein sequence according to NP\_001954.2; NP\_001171601.1; NP\_001171602.1.

Please note the [peptide](#) is available for sale.

### Purification and Storage

Purified from goat serum by ammonium sulphate precipitation followed by antigen affinity chromatography using the immunizing peptide.

Supplied at 0.5 mg/ml in Tris saline, 0.02% sodium azide, pH7.3 with 0.5% bovine serum albumin.

Aliquot and store at -20°C. Minimize freezing and thawing.

### Applications Tested

**Peptide ELISA:** antibody detection limit dilution 1:128000.

**Western blot:** Approx 160kDa double band observed in Human Prostate lysates (calculated MW of 134kDa according to NP\_001954.2). The two bands represent glycosylated forms of the mature protein. Recommended concentration: 1-3µg/ml. Primary incubation was 1 hour.

**IHC:** Paraffin embedded Human Skin. Recommended concentration: 5µg/ml.

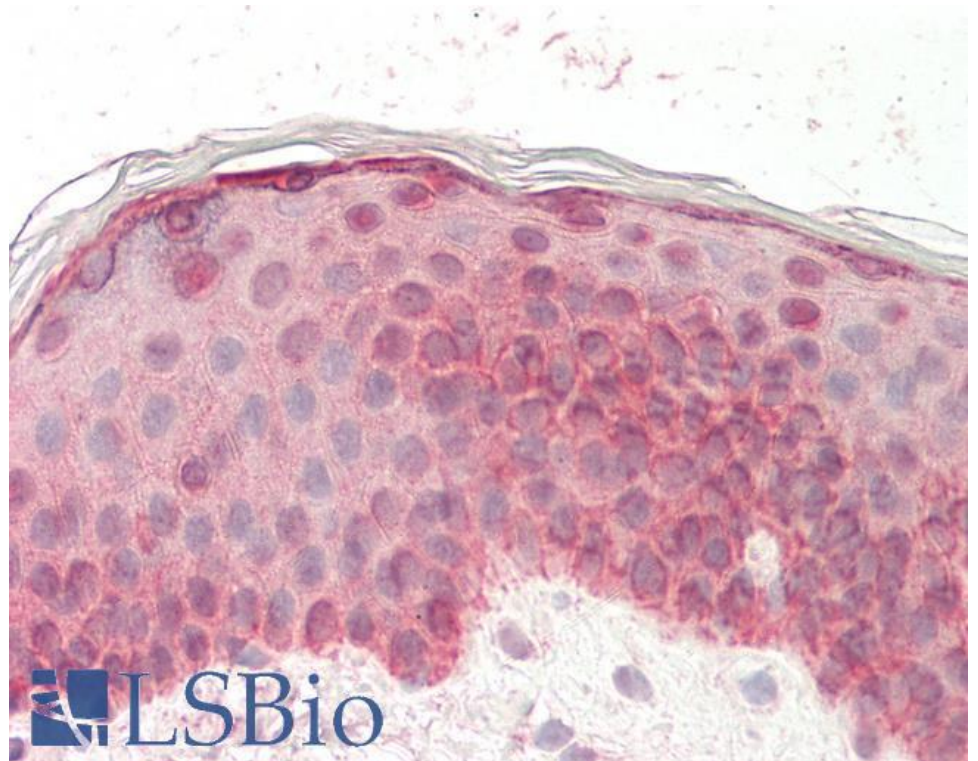
### Species Reactivity

**Tested:** Human

**Expected from sequence similarity:** Human, Dog



EB11752 (1 $\mu$ g/ml) staining of Human Prostate lysate (35 $\mu$ g protein in RIPA buffer). Detected by chemiluminescence.



EB11752 (5 $\mu$ g/ml) staining of paraffin embedded Human Skin. Steamed antigen retrieval with citrate buffer pH 6, AP-staining.