



## UK Office

### Everest Biotech Ltd

Cherwell Innovation Centre  
77 Heyford Park  
Upper Heyford  
Oxfordshire  
OX25 5HD  
UK

Enquiries:

[info@everestbiotech.com](mailto:info@everestbiotech.com)

Sales:

[sales@everestbiotech.com](mailto:sales@everestbiotech.com)

Tech support:

[support@everestbiotech.com](mailto:support@everestbiotech.com)

Tel: +44 (0)1869 238326

Fax: +44 (0)1869 238327

## US Office

### Everest Biotech c/o Abcore

405 Maple Street, Suite A106  
Ramona,  
CA 92065  
USA

Inquiries:

[info@everestbiotech.com](mailto:info@everestbiotech.com)

Sales:

[usasales@everestbiotech.com](mailto:usasales@everestbiotech.com)

Tech support:

[support@everestbiotech.com](mailto:support@everestbiotech.com)

Tel: 888-320-4628 (toll-free)

Fax: 888-841-9041

[www.everestbiotech.com](http://www.everestbiotech.com)

**Research Use Only. Not for  
diagnostic or therapeutic use.**

## EB11136 - Goat Anti-PRODH (aa112-134) Antibody

Size: 100µg specific antibody in 200µl



### Target Protein

**Principal Names:** FLJ33744, HSPOX2, MGC148078, MGC148079, OTTHUMP00000196496, OTTHUMP00000196497, p53-induced gene 6 protein, PIG6, POX, PRODH1, PRODH2, proline dehydrogenase (oxidase) 1, proline dehydrogenase, mitochondrial, proline oxidase 2, proline oxidase, mitochondrial, SCZD4, TP53I6, tumor protein p53 inducible protein 6, PRODH

**Official Symbol:** PRODH

**Accession Number(s):** NP\_057419.4; NP\_001182155.1

**Human GeneID(s):** [5625](#)

**Important Comments:** This antibody is expected to recognize both reported isoforms (NP\_057419.4; NP\_001182155.1).

### Immunogen

Peptide with sequence C-EDQESIQPLLRHYR, from the internal region of the protein sequence according to NP\_057419.4; NP\_001182155.1.

Please note the [peptide](#) is available for sale.

### Purification and Storage

Purified from goat serum by ammonium sulphate precipitation followed by antigen affinity chromatography using the immunizing peptide.

Supplied at 0.5 mg/ml in Tris saline, 0.02% sodium azide, pH7.3 with 0.5% bovine serum albumin.

Aliquot and store at -20°C. Minimize freezing and thawing.

### Applications Tested

**Peptide ELISA:** antibody detection limit dilution 1:16000.

**Western blot:** Approx75+55kDa bands observed in Human Brain (Cerebellum and Substantia nigra) lysates (calculated MW of 68.0kDa according to NP\_057419.4 and of 56.2kDa according to NP\_001182155.1). Recommended concentration: 0.3-1µg/ml.

### Species Reactivity

**Tested:** Human

**Expected from sequence similarity:** Human

### Specific Reference

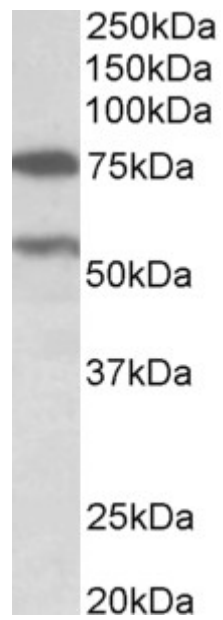
**This antibody has been successfully used in Western blot on Human:**

Zareba I, Surazynski A, Chrusciel M, Milyk W, Doroszko M, Rahman N, Palka J.

Functional Consequences of Intracellular Proline Levels Manipulation Affecting PRODH/POX-Dependent a Novel in Vitro Cell Culture Model.

Cell Physiol Biochem. 2017 Sep 22;43(2):670-684.

PMID: 28942439



EB11136 (0.3 $\mu$ g/ml) staining of Human Cerebellum lysate (35 $\mu$ g protein in RIPA buffer). Primary incubation was 1 hour. Detected by chemiluminescence.