



## UK Office

### Everest Biotech Ltd

Cherwell Innovation Centre  
77 Heyford Park  
Upper Heyford  
Oxfordshire  
OX25 5HD  
UK

Enquiries:

[info@everestbiotech.com](mailto:info@everestbiotech.com)

Sales:

[sales@everestbiotech.com](mailto:sales@everestbiotech.com)

Tech support:

[support@everestbiotech.com](mailto:support@everestbiotech.com)

Tel: +44 (0)1869 238326

[www.everestbiotech.com](http://www.everestbiotech.com)

**Research Use Only. Not for  
diagnostic or therapeutic use.**

## EB12324 - Goat Anti-proteinase 3 / myeloblastin (aa88-98) Antibody

Size: 100µg specific antibody in 200µl



### Target Protein

**Principal Names:** PRTN3, proteinase 3, ACPA, AGP7, C-ANCA, CANCA, MBN, MBT, NP4, P29, PR-3, PR3, C-ANCA antigen, NP-4, Wegener granulomatosis autoantigen, azurophil granule protein 7, leukocyte proteinase 3, myeloblastin, neutrophil proteinase 4, serine proteinase, neutrophil, wegenger autoantigen

**Official Symbol:** PRTN3

**Accession Number(s):** NP\_002768.3

**Human GeneID(s):** [5657](#)

### Immunogen

Peptide with sequence C-HNVRTQEPTQQ, from the internal region of the protein sequence according to NP\_002768.3.

Please note the [peptide](#) is available for sale.

### Purification and Storage

Purified from goat serum by ammonium sulphate precipitation followed by antigen affinity chromatography using the immunizing peptide.

Supplied at 0.5 mg/ml in Tris saline, 0.02% sodium azide, pH7.3 with 0.5% bovine serum albumin.

Aliquot and store at -20°C. Minimize freezing and thawing.

### Applications Tested

**Peptide ELISA:** antibody detection limit dilution 1:8000.

**Western blot:** Approx. 27kDa band observed in Human Spleen lysates, approx. 25kDa in Human Bone Marrow lysates, and approx. 26kDa in preliminary testing of THP-1 cell lysate (calculated MW of 27.8kDa according to NP\_002768.3). Recommended concentration: 0.3-1µg/ml. Primary incubation 1 hour at room temperature.

**IHC:** Paraffin embedded Human Spleen. Recommended concentration: 5µg/ml.

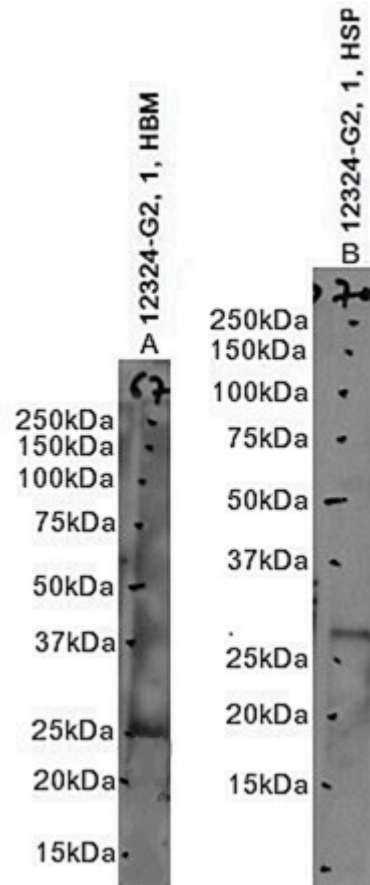
**Immunofluorescence:** Strong expression of the protein seen in the cytoplasm of A431 cells. Recommended concentration: 10µg/ml.

**Flow Cytometry:** Flow cytometric analysis of A431 cells. Recommended concentration: 10ug/ml.

### Species Reactivity

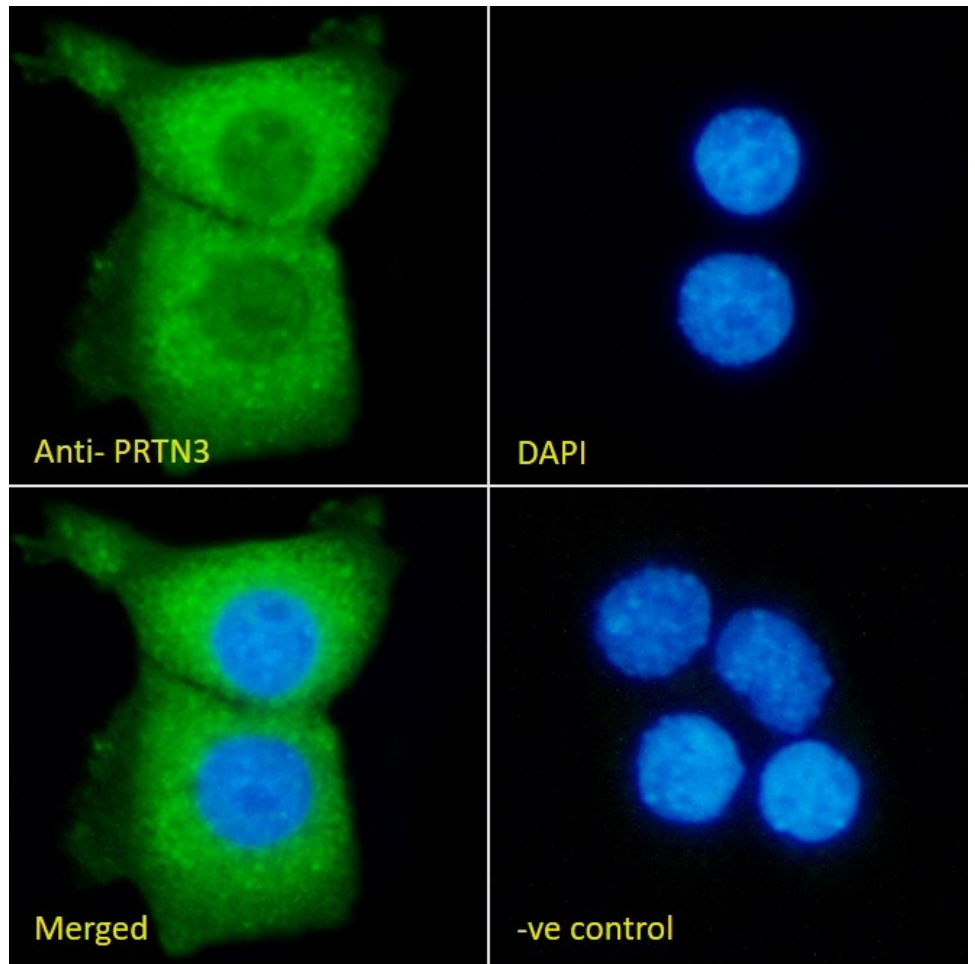
**Tested:** Human

**Expected from sequence similarity:** Human

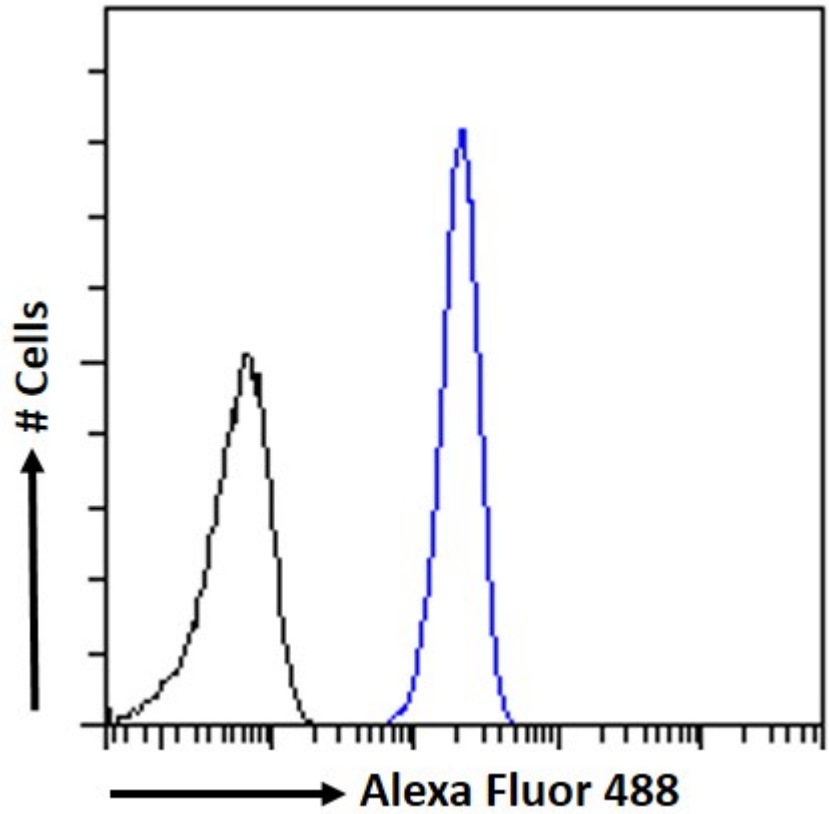


EB12324 optimised QC. Primary incubation 1 hour at room temperature.

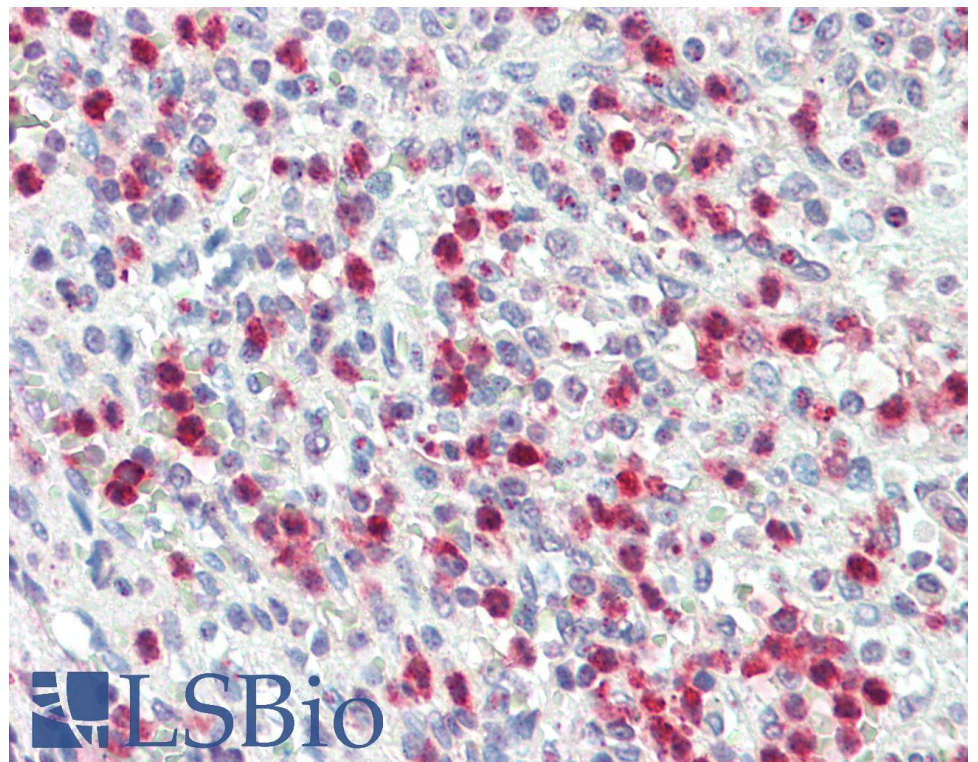
Images A and B: Human Bone Marrow and Spleen lysate at primary Ab concentration 1ug/ml. (Loaded 35µg protein in RIPA buffer, per lane). Detected by chemiluminescence.



EB12324 Immunofluorescence analysis of paraformaldehyde fixed A431 cells, permeabilized with 0.15% Triton. Primary incubation 1hr (10ug/ml) followed by Alexa Fluor 488 secondary antibody (2ug/ml), showing cytoplasmic staining. The nuclear stain is DAPI (blue). Negative control: Unimmunized goat IgG (10ug/ml) followed by Alexa Fluor 488 secondary antibody (2ug/ml).



EB12324 Flow cytometric analysis of paraformaldehyde fixed A431 cells (blue line), permeabilized with 0.5% Triton. Primary incubation 1hr (10ug/ml) followed by Alexa Fluor 488 secondary antibody (1ug/ml). IgG control: Unimmunized goat IgG (black line) followed by Alexa Fluor 488 secondary antibody.



EB12324 (5µg/ml) staining of paraffin embedded Human Spleen. Steamed antigen retrieval with citrate buffer pH 6, AP-staining.