



UK Office

Everest Biotech Ltd

Cherwell Innovation Centre
77 Heyford Park
Upper Heyford
Oxfordshire
OX25 5HD
UK

Enquiries:

info@everestbiotech.com

Sales:

sales@everestbiotech.com

Tech support:

support@everestbiotech.com

Tel: +44 (0)1869 238326

Fax: +44 (0)1869 238327

US Office

Everest Biotech c/o Abcore

405 Maple Street, Suite A106
Ramona,
CA 92065
USA

Inquiries:

info@everestbiotech.com

Sales:

usasales@everestbiotech.com

Tech support:

support@everestbiotech.com

Tel: 888-320-4628 (toll-free)

Fax: 888-841-9041

www.everestbiotech.com

**Research Use Only. Not for
diagnostic or therapeutic use.**

EB07513 - Goat Anti-PRPF31 Antibody

Size: 100µg specific antibody in 200µl



Target Protein

Principal Names: PRPF31, PRP31 pre-mRNA processing factor 31 homolog (S. cerevisiae), DKFZp566J153, NY-BR-99, PRP31, RP11, PRP31 pre-mRNA processing factor 31 homolog (yeast), pre-mRNA processing factor 31 homolog, pre-mRNA processing factor 31 homolog (yeast)

Official Symbol: PRPF31

Accession Number(s): NP_056444.3

Human GeneID(s): [26121](#)

Non-Human GeneID(s): 68988 (mouse)

Immunogen

Peptide with sequence KELGNSLDKCKNNEN, from the internal region of the protein sequence according to NP_056444.3.

Please note the [peptide](#) is available for sale.

Purification and Storage

Purified from goat serum by ammonium sulphate precipitation followed by antigen affinity chromatography using the immunizing peptide.

Supplied at 0.5 mg/ml in Tris saline, 0.02% sodium azide, pH7.3 with 0.5% bovine serum albumin.

Aliquot and store at -20°C. Minimize freezing and thawing.

Applications Tested

Peptide ELISA: antibody detection limit dilution 1:128000.

Western blot: Approx 60kDa band observed in nuclear lysates of cell lines A431, HeLa, HEK293 and NIH3T3 (calculated MW of 55.4kDa according to Human NP_056444.3 and Mouse NP_081604.3). Recommended concentration: 1-3µg/ml. Primary incubation 1 hour at room temperature.

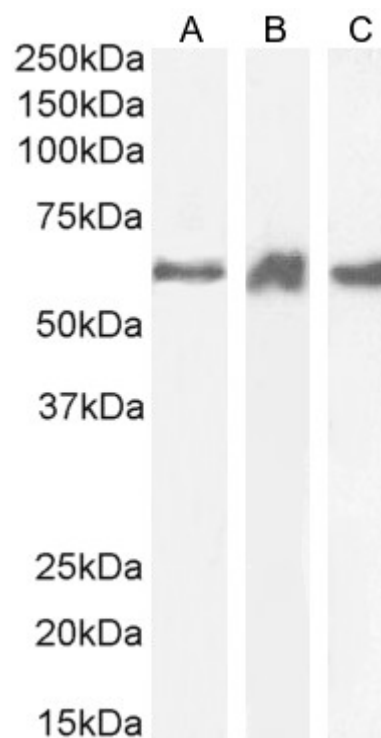
Immunofluorescence: Strong expression of the protein seen in the nuclei and cytoplasm of HEK293 and HeLa cells. Recommended concentration: 10µg/ml.

Flow Cytometry: Flow cytometric analysis of HEK293 cells. Recommended concentration: 10ug/ml.

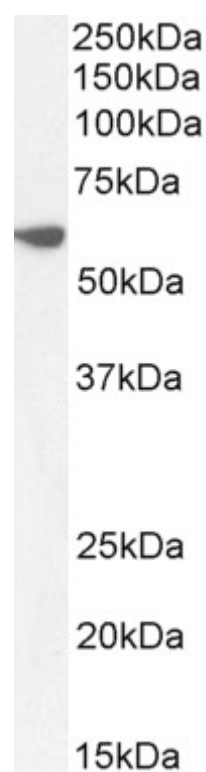
Species Reactivity

Tested: Human

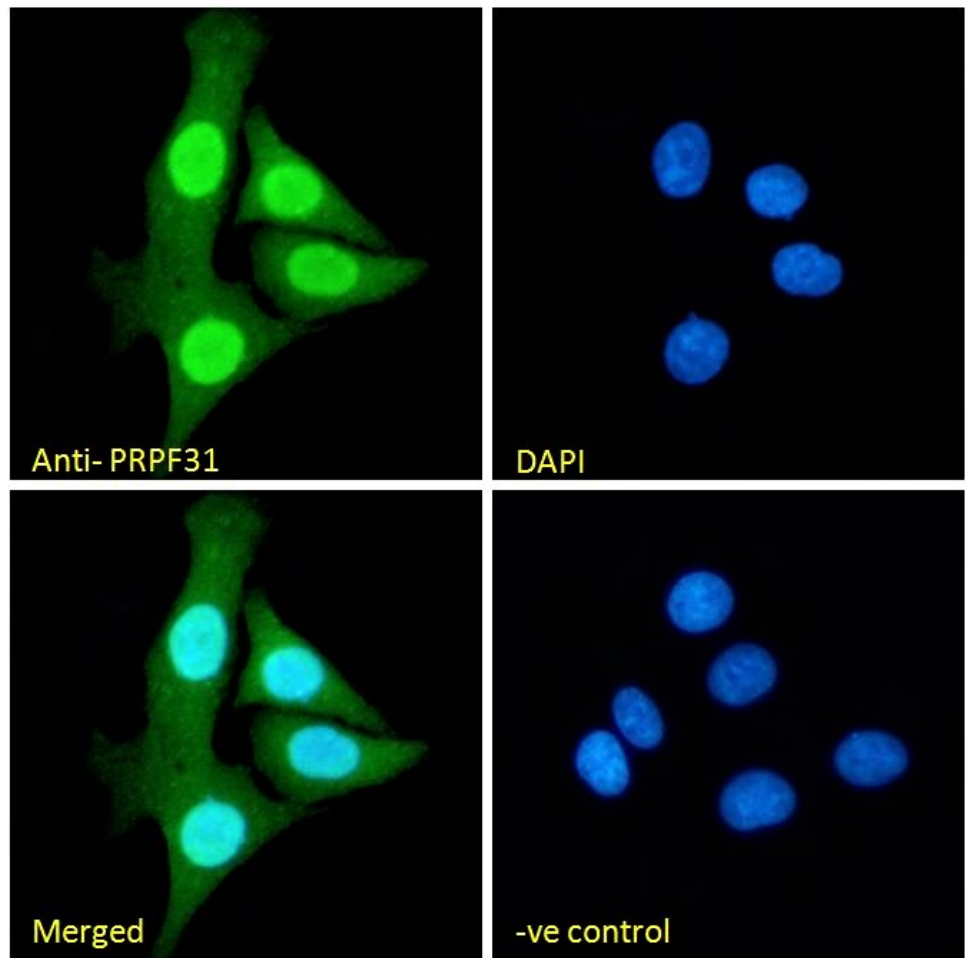
Expected from sequence similarity: Human, Mouse, Rat, Dog, Pig, Cow



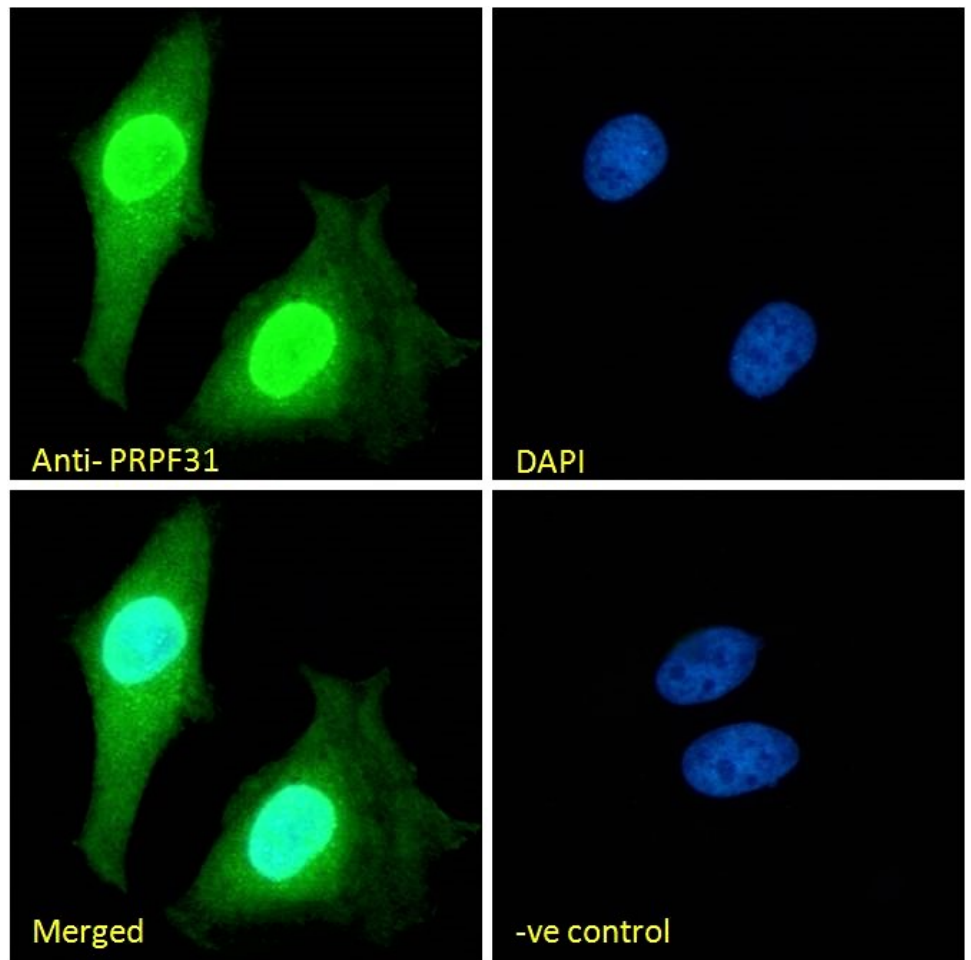
EB07513 (1 μ g/ml) staining of A431 (A), HeLa (B) and HEK293 (C) nuclear cell lysate (35 μ g protein in RIPA buffer). Detected by chemiluminescence.



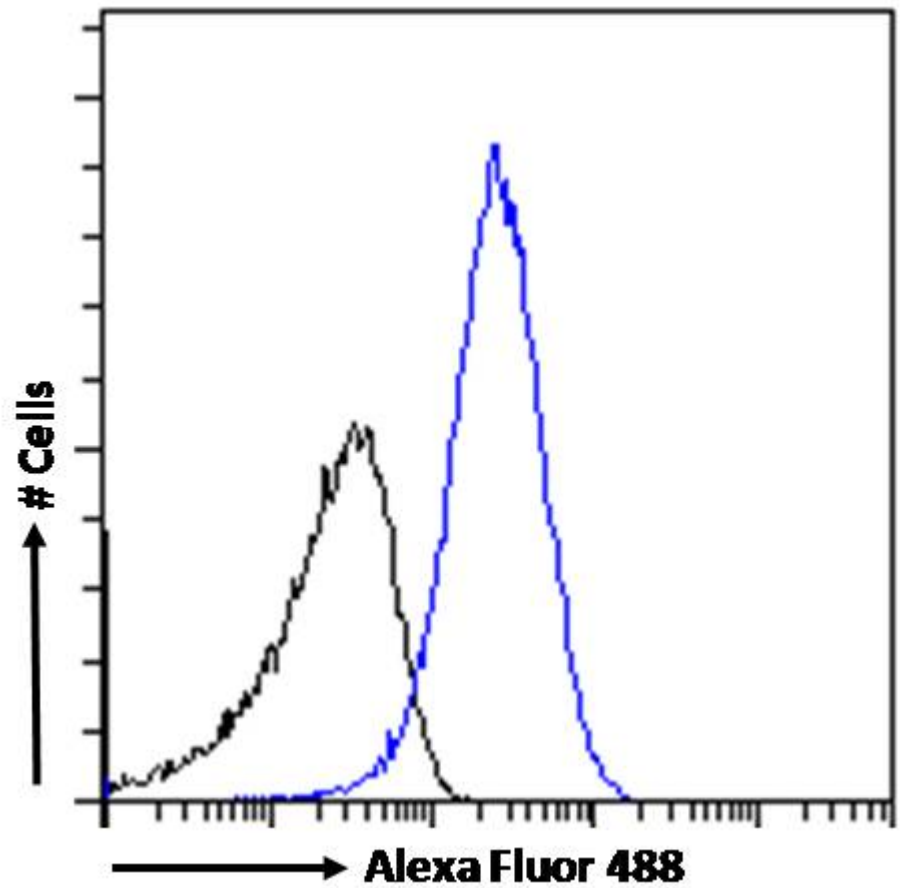
EB07513 (1 μ g/ml) staining of NIH3T3 nuclear cell lysate (35 μ g protein in RIPA buffer). Detected by chemiluminescence.



EB07513 Immunofluorescence analysis of paraformaldehyde fixed HEK293 cells, permeabilized with 0.15% Triton. Primary incubation 1hr (10ug/ml) followed by Alexa Fluor 488 secondary antibody (2ug/ml), showing strong nuclear and weak cytoplasmic staining. The nuclear stain is DAPI (blue). Negative control: Unimmunized goat IgG (10ug/ml) followed by Alexa Fluor 488 secondary antibody (2ug/ml).



EB07513 Immunofluorescence analysis of paraformaldehyde fixed HeLa cells, permeabilized with 0.15% Triton. Primary incubation 1hr (10ug/ml) followed by Alexa Fluor 488 secondary antibody (2ug/ml), showing strong nuclear and some cytoplasmic staining. The nuclear stain is DAPI (blue). Negative control: Unimmunized goat IgG (10ug/ml) followed by Alexa Fluor 488 secondary antibody (2ug/ml).



EB07513 Flow cytometric analysis of paraformaldehyde fixed HEK293 cells (blue line), permeabilized with 0.5% Triton. Primary incubation 1hr (10ug/ml) followed by Alexa Fluor 488 secondary antibody (1ug/ml). IgG control: Unimmunized goat IgG (black line) followed by Alexa Fluor 488 secondary antibody.