

## UK Office

### Everest Biotech Ltd

Cherwell Innovation Centre  
77 Heyford Park  
Upper Heyford  
Oxfordshire  
OX25 5HD  
UK

Enquiries:

[info@everestbiotech.com](mailto:info@everestbiotech.com)

Sales:

[sales@everestbiotech.com](mailto:sales@everestbiotech.com)

Tech support:

[support@everestbiotech.com](mailto:support@everestbiotech.com)

Tel: +44 (0)1869 238326

[www.everestbiotech.com](http://www.everestbiotech.com)

**Research Use Only. Not for  
diagnostic or therapeutic use.**

## EB08175 - Goat Anti-PRRX1 Antibody

Size: 100µg specific antibody in 200µl



### Target Protein

**Principal Names:** PRRX1, paired related homeobox 1, PHOX1, PMX1, PRX1, homeobox protein PHOX1, paired mesoderm homeobox 1, paired mesoderm homeobox 1

**Official Symbol:** PRRX1

**Accession Number(s):** NP\_008833.1; NP\_073207.1

**Human GeneID(s):** [5396](#)

**Non-Human GeneID(s):** 18933 (mouse)

**Important Comments:** This antibody is expected to recognise both reported isoforms (NP\_008833.1; NP\_073207.1).

### Immunogen

Peptide with sequence C-GSDTPQQDNDQ, from the internal region of the protein sequence according to NP\_008833.1; NP\_073207.1.

Please note the [peptide](#) is available for sale.

### Purification and Storage

Purified from goat serum by ammonium sulphate precipitation followed by antigen affinity chromatography using the immunizing peptide.

Supplied at 0.5 mg/ml in Tris saline, 0.02% sodium azide, pH7.3 with 0.5% bovine serum albumin.

Aliquot and store at -20°C. Minimize freezing and thawing.

### Applications Tested

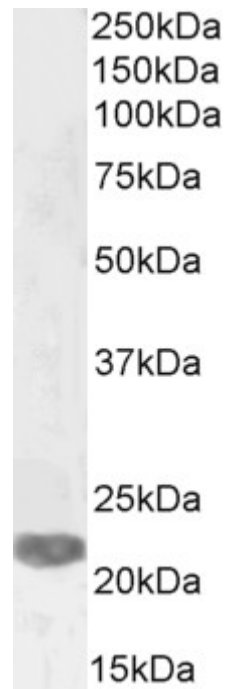
**Peptide ELISA:** antibody detection limit dilution 1:2000.

**Western blot:** Approx 28kDa band observed in Mouse Heart lysates, and approx. 22-23kDa in lysates of cell line LNCaP (calculated MW of 24.4kDa according to Human NP\_008833.1) and 27.3kDa according to Mouse NP\_035257.1 (.Recommended concentration: 1-2µg/ml. Primary incubation 1 hour at room temperature.

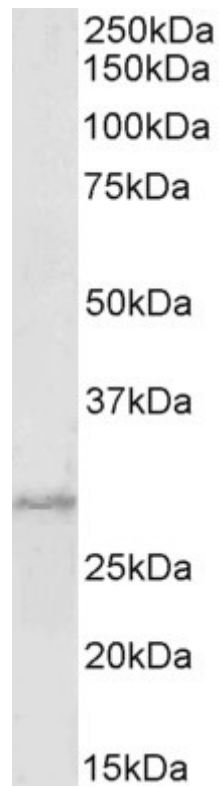
### Species Reactivity

**Tested:** Human, Mouse

**Expected from sequence similarity:** Human, Mouse, Cow



EB08175 (2 $\mu$ g/ml) staining of LNCaP cell lysate (35 $\mu$ g protein in RIPA buffer). Detected by chemiluminescence.



EB08175 (1 $\mu$ g/ml) staining of Mouse Heart lysate (35 $\mu$ g protein in RIPA buffer). Detected by chemiluminescence.