



UK Office

Everest Biotech Ltd

Cherwell Innovation Centre
77 Heyford Park
Upper Heyford
Oxfordshire
OX25 5HD
UK

Enquiries:

info@everestbiotech.com

Sales:

sales@everestbiotech.com

Tech support:

support@everestbiotech.com

Tel: +44 (0)1869 238326

Fax: +44 (0)1869 238327

US Office

Everest Biotech c/o Abcore

405 Maple Street, Suite A106
Ramona,
CA 92065
USA

Inquiries:

info@everestbiotech.com

Sales:

usasales@everestbiotech.com

Tech support:

support@everestbiotech.com

Tel: 888-320-4628 (toll-free)

Fax: 888-841-9041

www.everestbiotech.com

**Research Use Only. Not for
diagnostic or therapeutic use.**

EB08175 - Goat Anti-PRRX1 Antibody

Size: 100µg specific antibody in 200µl



Target Protein

Principal Names: PRRX1, paired related homeobox 1, PHOX1, PMX1, PRX1, homeobox protein PHOX1, paired mesoderm homeo box 1, paired mesoderm homeobox 1

Official Symbol: PRRX1

Accession Number(s): NP_008833.1; NP_073207.1

Human GeneID(s): [5396](#)

Non-Human GeneID(s): 18933 (mouse)

Important Comments: This antibody is expected to recognise both reported isoforms (NP_008833.1; NP_073207.1).

Immunogen

Peptide with sequence C-GSDTPQQDNDQ, from the internal region of the protein sequence according to NP_008833.1; NP_073207.1.

Please note the [peptide](#) is available for sale.

Purification and Storage

Purified from goat serum by ammonium sulphate precipitation followed by antigen affinity chromatography using the immunizing peptide.

Supplied at 0.5 mg/ml in Tris saline, 0.02% sodium azide, pH7.3 with 0.5% bovine serum albumin.

Aliquot and store at -20°C. Minimize freezing and thawing.

Applications Tested

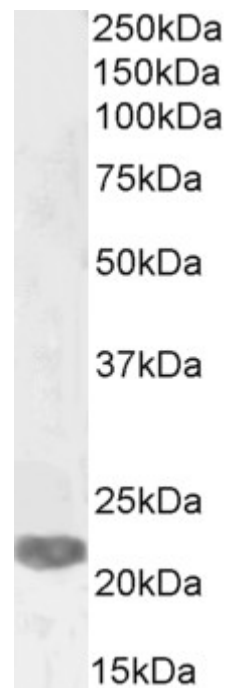
Peptide ELISA: antibody detection limit dilution 1:2000.

Western blot: Approx 28kDa band observed in Mouse Heart lysates, and approx. 22-23kDa in lysates of cell line LNCaP (calculated MW of 24.4kDa according to Human NP_008833.1) and 27.3kDa according to Mouse NP_035257.1 (.Recommended concentration: 1-2µg/ml. Primary incubation 1 hour at room temperature.

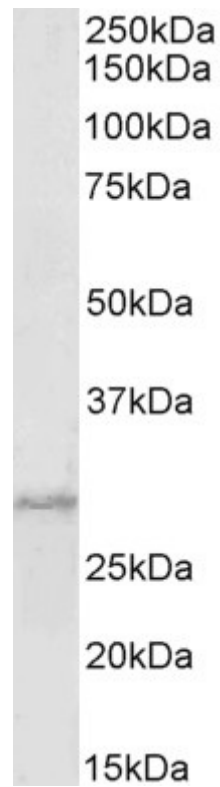
Species Reactivity

Tested: Human, Mouse

Expected from sequence similarity: Human, Mouse, Cow



EB08175 (2 μ g/ml) staining of LNCaP cell lysate (35 μ g protein in RIPA buffer). Detected by chemiluminescence.



EB08175 (1 μ g/ml) staining of Mouse Heart lysate (35 μ g protein in RIPA buffer). Detected by chemiluminescence.