



UK Office

Everest Biotech Ltd

Cherwell Innovation Centre
77 Heyford Park
Upper Heyford
Oxfordshire
OX25 5HD
UK

Enquiries:

info@everestbiotech.com

Sales:

sales@everestbiotech.com

Tech support:

support@everestbiotech.com

Tel: +44 (0)1869 238326

Fax: +44 (0)1869 238327

US Office

Everest Biotech c/o Abcore

405 Maple Street, Suite A106
Ramona,
CA 92065
USA

Inquiries:

info@everestbiotech.com

Sales:

usasales@everestbiotech.com

Tech support:

support@everestbiotech.com

Tel: 888-320-4628 (toll-free)

Fax: 888-841-9041

www.everestbiotech.com

**Research Use Only. Not for
diagnostic or therapeutic use.**

EB10277 - Goat Anti-PSMA4 Antibody

Size: 100µg specific antibody in 200µl



Target Protein

Principal Names: HC9, HsT17706, macropain subunit C9, MGC111191, MGC12467, MGC24813, multicatalytic endopeptidase complex subunit C9, proteasome (prosome, macropain) subunit, alpha type, 4, proteasome alpha 4 subunit, proteasome component C9, proteasome subun, PSC9, PSMA4

Official Symbol: PSMA4

Accession Number(s): NP_002780.1; NP_001096138.1

Human GeneID(s): [5685](#)

Non-Human GeneID(s): 26441 (mouse), 29671 (rat)

Important Comments: This antibody is expected to recognize both reported isoforms (NP_002780.1; NP_001096138.1). Reported variants represent identical protein: NP_002780.1, NP_001096137.1

Immunogen

Peptide with sequence C-SDANVLTNELR, from the internal region of the protein sequence according to NP_002780.1; NP_001096138.1.

Please note the [peptide](#) is available for sale.

Purification and Storage

Purified from goat serum by ammonium sulphate precipitation followed by antigen affinity chromatography using the immunizing peptide.

Supplied at 0.5 mg/ml in Tris saline, 0.02% sodium azide, pH7.3 with 0.5% bovine serum albumin.

Aliquot and store at -20°C. Minimize freezing and thawing.

Applications Tested

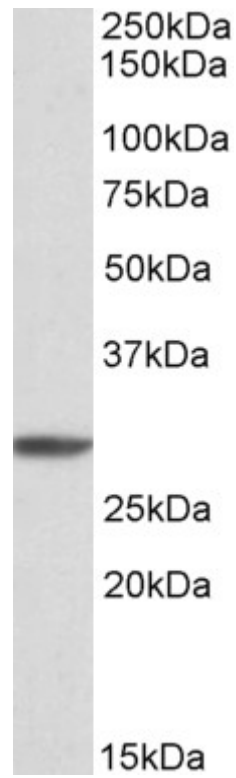
Peptide ELISA: antibody detection limit dilution 1:4000.

Western blot: Approx 28kDa band observed in lysates of cell lines K562, NIH3T3 and in lysates of Human Tonsil, Human Peripheral Blood Mononucleocytes and in Mouse and Rat Spleen (calculated MW of 29.5kDa according to NP_002780.1). Recommended concentration: 0.3-1µg/ml.

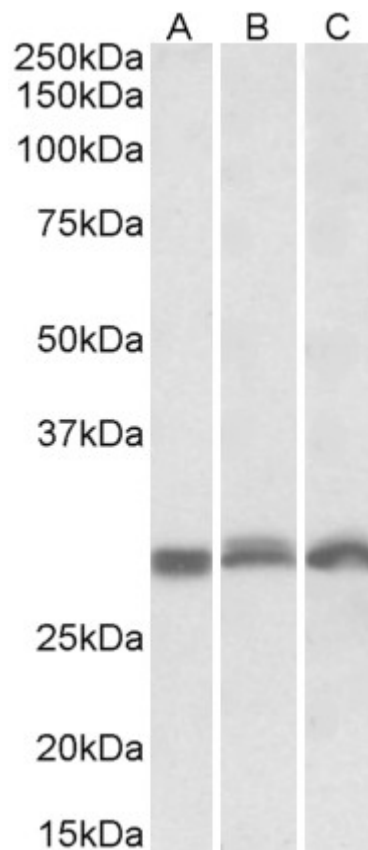
Species Reactivity

Tested: Human, Mouse, Rat

Expected from sequence similarity: Human, Mouse, Rat, Dog



EB010277 (1 µg/ml) staining of K562 cell lysate (35 µg protein in RIPA buffer). Primary incubation was 1 hour. Detected by chemiluminescence.



EB010277 (0.3 µg/ml) staining of NIH3T3 (A), Mouse Spleen (B), Rat Spleen (C) lysates (35 µg protein in RIPA buffer). Primary incubation was 1 hour. Detected by chemiluminescence.