



## UK Office

### Everest Biotech Ltd

Cherwell Innovation Centre  
77 Heyford Park  
Upper Heyford  
Oxfordshire  
OX25 5HD  
UK

Enquiries:

[info@everestbiotech.com](mailto:info@everestbiotech.com)

Sales:

[sales@everestbiotech.com](mailto:sales@everestbiotech.com)

Tech support:

[support@everestbiotech.com](mailto:support@everestbiotech.com)

Tel: +44 (0)1869 238326

Fax: +44 (0)1869 238327

## US Office

### Everest Biotech c/o Abcore

405 Maple Street, Suite A106  
Ramona,  
CA 92065  
USA

Inquiries:

[info@everestbiotech.com](mailto:info@everestbiotech.com)

Sales:

[usasales@everestbiotech.com](mailto:usasales@everestbiotech.com)

Tech support:

[support@everestbiotech.com](mailto:support@everestbiotech.com)

Tel: 888-320-4628 (toll-free)

Fax: 888-841-9041

[www.everestbiotech.com](http://www.everestbiotech.com)

**Research Use Only. Not for  
diagnostic or therapeutic use.**

## EB10294 - Goat Anti-PSMB3 Antibody

Size: 100µg specific antibody in 200µl



### Target Protein

**Principal Names:** HC10-II, MGC4147, proteasome (prosome, macropain) subunit, beta type, 3, proteasome beta 3 subunit, proteasome chain 13, proteasome component C10-II, proteasome theta chain, PSMB3

**Official Symbol:** PSMB3

**Accession Number(s):** NP\_002786.2

**Human GeneID(s):** [5691](#)

**Non-Human GeneID(s):** 26446 (mouse), 29676 (rat)

### Immunogen

Peptide with sequence C-NLYELKEGRQ, from the internal region of the protein sequence according to NP\_002786.2.

Please note the [peptide](#) is available for sale.

### Purification and Storage

Purified from goat serum by ammonium sulphate precipitation followed by antigen affinity chromatography using the immunizing peptide.

Supplied at 0.5 mg/ml in Tris saline, 0.02% sodium azide, pH7.3 with 0.5% bovine serum albumin.

Aliquot and store at -20°C. Minimize freezing and thawing.

### Applications Tested

**Peptide ELISA:** antibody detection limit dilution 1:16000.

**Western blot:** Approx 24kDa band observed in lysates of cell line K562 (calculated MW of 22.9kDa according to NP\_002786.2). Recommended concentration: 1-3µg/ml.

**IHC:** Paraffin embedded Human Lung. Recommended concentration: 10µg/ml.

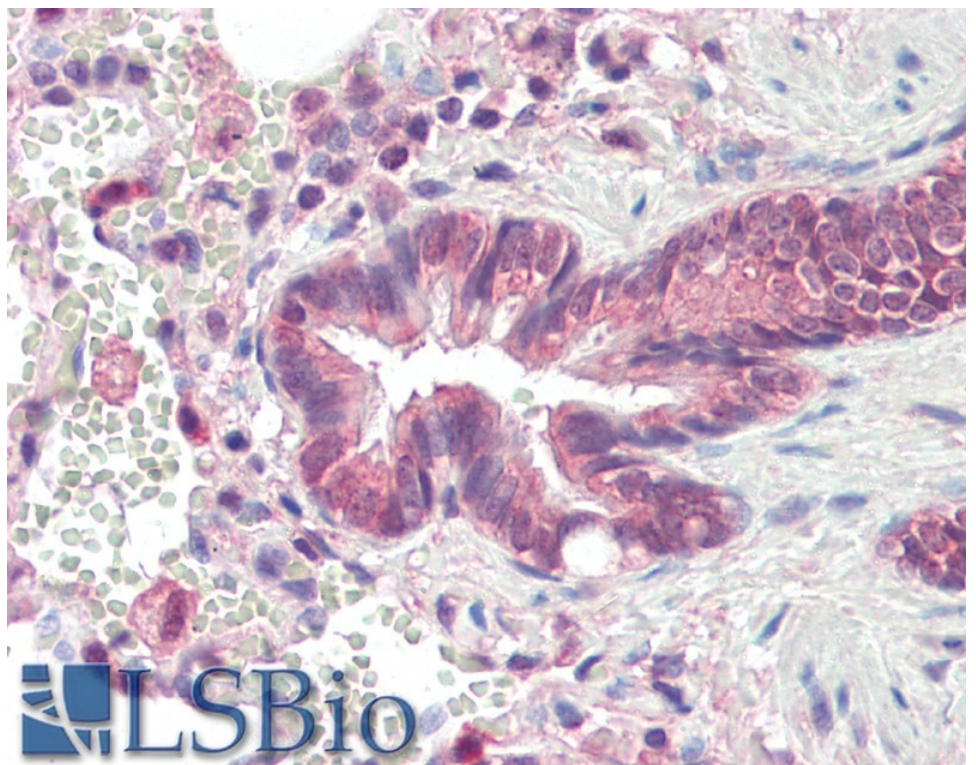
### Species Reactivity

**Tested:** Human

**Expected from sequence similarity:** Human, Mouse, Rat, Dog, Cow, Pig



EB10294 (1 $\mu$ g/ml) staining of K562 lysate (35 $\mu$ g protein in RIPA buffer). Primary incubation was 1 hour.  
Detected by chemiluminescence.



EB10294 (10 $\mu$ g/ml) staining of paraffin embedded Human Lung. Steamed antigen retrieval with citrate buffer pH 6, AP-staining.