



UK Office

Everest Biotech Ltd

Cherwell Innovation Centre
77 Heyford Park
Upper Heyford
Oxfordshire
OX25 5HD
UK

Enquiries:

info@everestbiotech.com

Sales:

sales@everestbiotech.com

Tech support:

support@everestbiotech.com

Tel: +44 (0)1869 238326

Fax: +44 (0)1869 238327

US Office

Everest Biotech c/o Abcore

405 Maple Street, Suite A106
Ramona,
CA 92065
USA

Inquiries:

info@everestbiotech.com

Sales:

usasales@everestbiotech.com

Tech support:

support@everestbiotech.com

Tel: 888-320-4628 (toll-free)

Fax: 888-841-9041

www.everestbiotech.com

**Research Use Only. Not for
diagnostic or therapeutic use.**

EB10296 - Goat Anti-PSMB4 (aa230-239) Antibody

Size: 100µg specific antibody in 200µl



Target Protein

Principal Names: HN3, HsN3, macropain beta chain, multicatalytic endopeptidase complex beta chain, PROS26, proteasome (prosome, macropain) subunit, beta type, 4, proteasome beta 4 subunit, proteasome beta chain, proteasome chain 3, proteasome subunit HsN3, PSMB4

Official Symbol: PSMB4

Accession Number(s): NP_002787.2

Human GeneID(s): [5692](#)

Non-Human GeneID(s): 19172 (mouse), 58854 (rat)

Immunogen

Peptide with sequence C-NRFQIATVTE, from the internal region of the protein sequence according to NP_002787.2.

Please note the [peptide](#) is available for sale.

Purification and Storage

Purified from goat serum by ammonium sulphate precipitation followed by antigen affinity chromatography using the immunizing peptide.

Supplied at 0.5 mg/ml in Tris saline, 0.02% sodium azide, pH7.3 with 0.5% bovine serum albumin.

Aliquot and store at -20°C. Minimize freezing and thawing.

Applications Tested

Peptide ELISA: antibody detection limit dilution 1:8000.

Western blot: Approx 25-26kDa band observed in lysates of cell lines HEK293, HeLa, and K562 and in Mouse and Rat Liver lysates (calculated MW of 29.1kDa according to NP_002787.2). This molecular weight is routinely observed by other sources. Recommended concentration: 0.1-0.3µg/ml.

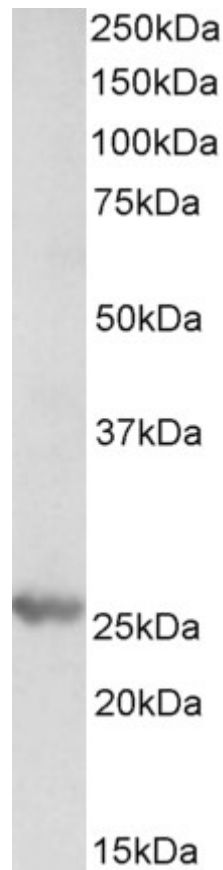
Species Reactivity

Tested: Human, Mouse, Rat

Expected from sequence similarity: Human, Mouse, Rat, Dog, Cow



EB10296 (0.1µg/ml) staining of HEK293 lysate (35µg protein in RIPA buffer). Primary incubation was 1 hour.
Detected by chemiluminescence.



EB10296 (0.3µg/ml) staining of Mouse Liver lysate (35µg protein in RIPA buffer). Primary incubation was 1 hour.
Detected by chemiluminescence.