



## UK Office

### Everest Biotech Ltd

Cherwell Innovation Centre  
77 Heyford Park  
Upper Heyford  
Oxfordshire  
OX25 5HD  
UK

Enquiries:

[info@everestbiotech.com](mailto:info@everestbiotech.com)

Sales:

[sales@everestbiotech.com](mailto:sales@everestbiotech.com)

Tech support:

[support@everestbiotech.com](mailto:support@everestbiotech.com)

Tel: +44 (0)1869 238326

[www.everestbiotech.com](http://www.everestbiotech.com)

**Research Use Only. Not for  
diagnostic or therapeutic use.**

## EB07277 - Goat Anti-Psoriasin / S100A7 Antibody

Size: 100µg specific antibody in 200µl



### Target Protein

**Principal Names:** S100A7, S100 calcium binding protein A7 (psoriasin 1), HGNC:10497, PSOR1, S100A7c, S100 calcium-binding protein A7, S100 calcium-binding protein A7 (psoriasin 1), psoriasin 1, Psoriasin

**Official Symbol:** S100A7

**Accession Number(s):** NP\_002954.1

**Human GeneID(s):** [6278](#)

### Immunogen

Peptide with sequence C-HKYTRRDDKIDKP, from the internal region of the protein sequence according to NP\_002954.1.

Please note the [peptide](#) is available for sale.

### Purification and Storage

Purified from goat serum by ammonium sulphate precipitation followed by antigen affinity chromatography using the immunizing peptide.

Supplied at 0.5 mg/ml in Tris saline, 0.02% sodium azide, pH7.3 with 0.5% bovine serum albumin.

Aliquot and store at -20°C. Minimize freezing and thawing.

### Applications Tested

**Peptide ELISA:** antibody detection limit dilution 1:32000.

**Western blot:** Approx 15kDa band observed in Human Skin lysates (calculated MW of 11.5kDa according to NP\_002954.1). Recommended concentration: 1-3µg/ml. In transfected HEK293 transiently expressing full-length Human S100A7 (myc and DYKDDDDK tagged), a band of approx. 16kDa was observed. No bands were observed in mock-transfected HEK293 and the same band was observed using anti-myc tag antibody. Recommended concentration, 0.1-0.5µg/ml. Approx 15kDa band was also observed in Human Skin lysates (calculated MW of 11.5kDa according to NP\_002954.1). Recommended concentration: 0.3-1µg/ml.

**IHC:** Paraffin embedded Human Tonsil. Recommended concentration: 3.75µg/ml.

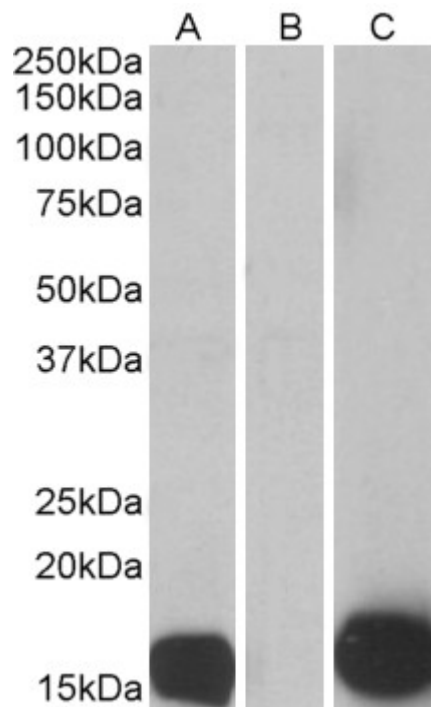
### Species Reactivity

**Tested:** Human

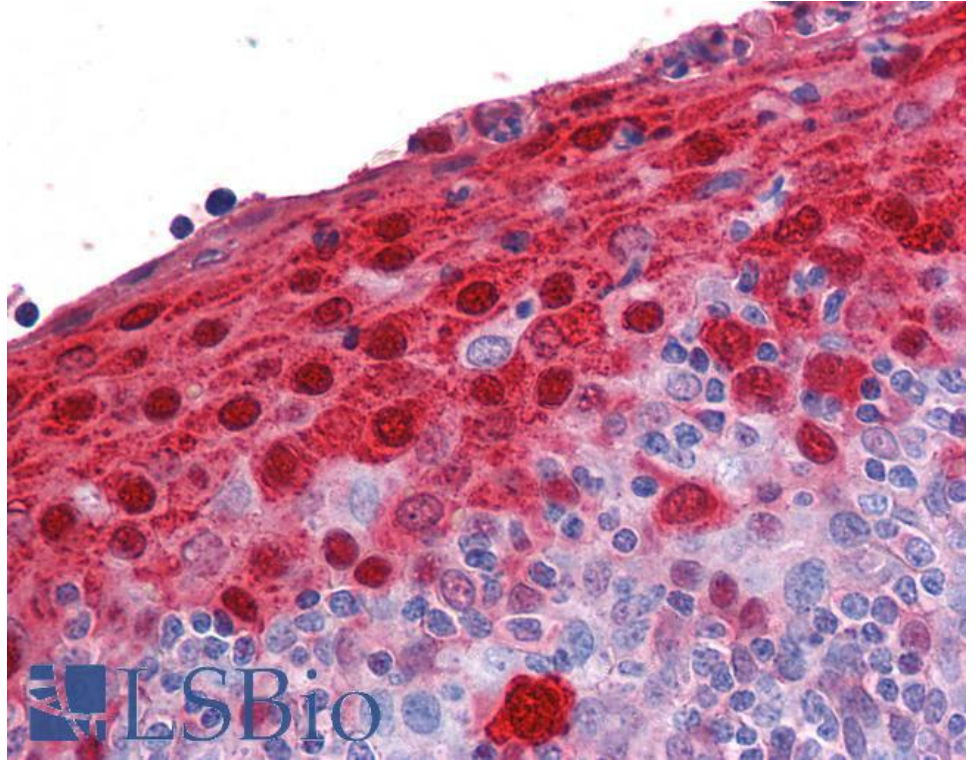
**Expected from sequence similarity:** Human



EB07277 (0.1 $\mu$ g/ml) staining of Human Skin lysate (35 $\mu$ g protein in RIPA buffer). Primary incubation was 1 hour. Detected by chemiluminescence.



HEK293 lysate (10 $\mu$ g protein in RIPA buffer) overexpressing Human S100A7 with C-terminal MYC tag probed with EB07277 (0.5 $\mu$ g/ml) in Lane A and probed with anti-MYC Tag (1/1000) in lane C. Mock-transfected HEK293 probed with EB07277 (1 $\mu$ g/ml) in Lane B. Primary incubations were for 1 hour. Detected by chemiluminescence.



EB07277 (3.75µg/ml) staining of paraffin embedded Human Tonsil. Steamed antigen retrieval with citrate buffer pH 6, AP-staining.