

## UK Office

### Everest Biotech Ltd

Cherwell Innovation Centre  
77 Heyford Park  
Upper Heyford  
Oxfordshire  
OX25 5HD  
UK

Enquiries:

[info@everestbiotech.com](mailto:info@everestbiotech.com)

Sales:

[sales@everestbiotech.com](mailto:sales@everestbiotech.com)

Tech support:

[support@everestbiotech.com](mailto:support@everestbiotech.com)

Tel: +44 (0)1869 238326

[www.everestbiotech.com](http://www.everestbiotech.com)

**Research Use Only. Not for  
diagnostic or therapeutic use.**

## EB07312 - Goat Anti-PTCH (Internal) Antibody

Size: 100µg specific antibody in 200µl



### Target Protein

**Principal Names:** PTCH, patched homolog (Drosophila), RP11-435O5.3, BCNS, FLJ42602, HPE7, NBCCS, PTC, PTC1, PTCH1, PTCH protein +12b, PTCH protein +41, PTCH protein -10, patched, patched (Drosophila) homolog

**Official Symbol:** PTCH1

**Accession Number(s):** NP\_000255.2; NP\_001077072.1; NP\_001077071.1; NP\_001077075.1

**Human GeneID(s):** [5727](#)

**Important Comments:** This antibody is expected to recognise all four reported isoforms (NP\_000255.2; NP\_001077072.1; NP\_001077071.1; NP\_001077075.1). Reported variants represent identical protein (NP\_001077075.1; NP\_001077076.1; NP\_001077073.1; NP\_001077074.1).

### Immunogen

Peptide with sequence C-HPESRHHPPSNPRQQ, from the internal region of the protein sequence according to NP\_000255.2; NP\_001077072.1; NP\_001077071.1; NP\_001077075.1.

Please note the [peptide](#) is available for sale.

### Purification and Storage

Purified from goat serum by ammonium sulphate precipitation followed by antigen affinity chromatography using the immunizing peptide.

Supplied at 0.5 mg/ml in Tris saline, 0.02% sodium azide, pH7.3 with 0.5% bovine serum albumin.

Aliquot and store at -20°C. Minimize freezing and thawing.

### Applications Tested

**Peptide ELISA:** antibody detection limit dilution 1:32000.

**Western blot:** Approx 150kDa band observed in Human Brain lysates (calculated MW of 153.9kDa according to NP\_001077071.1). Recommended concentration: 1-3µg/ml.

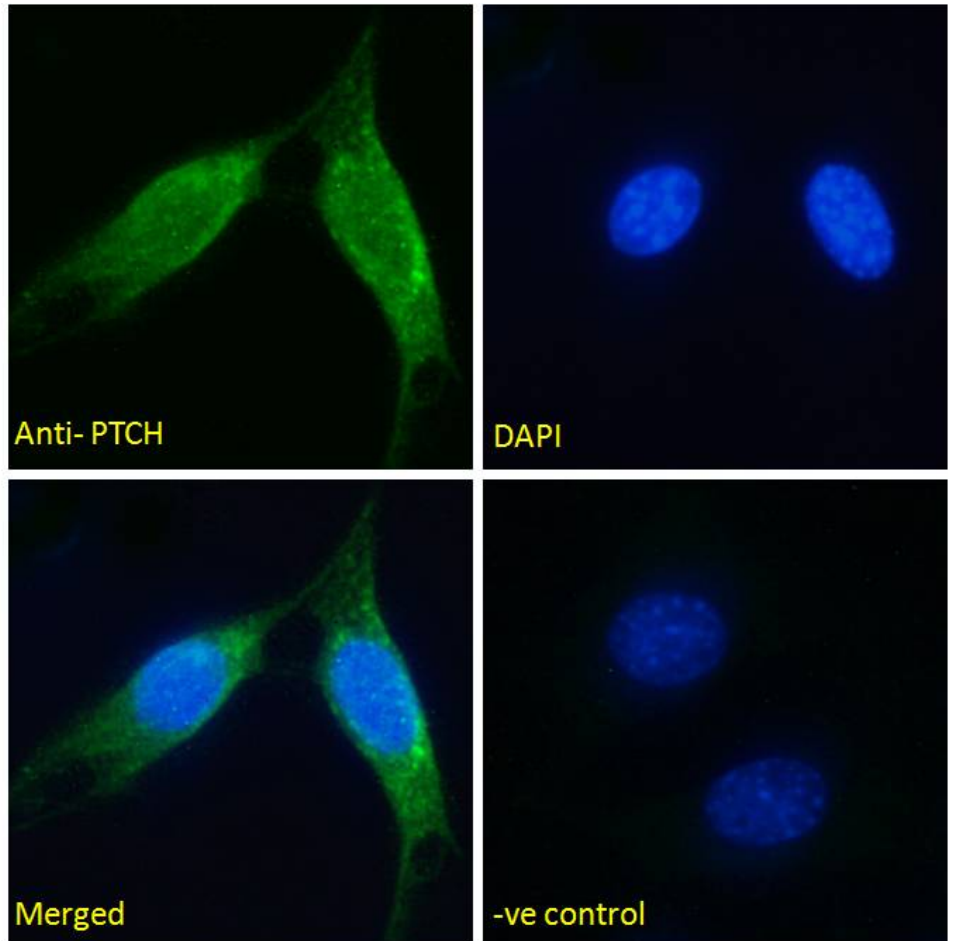
Primary incubation 1 hour at room temperature.

**Immunofluorescence :** Expression of the protein seen in the Golgi/membrane of NIH3T3 cells. Recommended concentration: 5µg/ml.

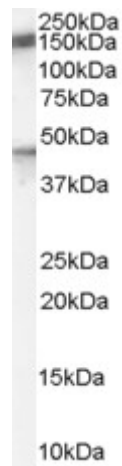
### Species Reactivity

**Tested:** Human, Mouse

**Expected from sequence similarity:** Human, Dog, Pig, Cow



EB07312 Immunofluorescence analysis of paraformaldehyde fixed NIH3T3 cells, permeabilized with 0.15% Triton. Primary incubation 1hr (5ug/ml) followed by Alexa Fluor 488 secondary antibody (2ug/ml), showing Golgi/membrane staining. The nuclear stain is DAPI (blue). Negative control: Unimmunized goat IgG (5ug/ml) followed by Alexa Fluor 488 secondary antibody (2ug/ml).



EB07312 (1µg/ml) staining of Human Brain lysate (35µg protein in RIPA buffer). Detected by chemiluminescence.