

UK Office

Everest Biotech Ltd

Cherwell Innovation Centre
77 Heyford Park
Upper Heyford
Oxfordshire
OX25 5HD
UK

Enquiries:

info@everestbiotech.com

Sales:

sales@everestbiotech.com

Tech support:

support@everestbiotech.com

Tel: +44 (0)1869 238326

www.everestbiotech.com

**Research Use Only. Not for
diagnostic or therapeutic use.**

EB08205 - Goat Anti-PTGER3 / EP3 Antibody

Size: 100µg specific antibody in 200µl



Target Protein

Principal Names: PTGER3, EP3, prostaglandin E receptor 3 (subtype EP3), EP3-I, EP3-II, EP3-III, EP3-IV, EP3e, MGC141828, MGC141829, MGC27302, PGE receptor, EP3 subtype, prostaglandin E receptor 3, subtype EP3, prostaglandin E2 receptor, prostaglandin receptor (PGE-2), pr

Official Symbol: PTGER3

Accession Number(s): NP_000948.2; NP_942005.2; NP_942006.1

Human GeneID(s): [5733](#)

Important Comments: This antibody is expected to recognize isoforms 1, 2 and 3 (NP_000948.2, NP_942005.2 and NP_942006.1).

Immunogen

Peptide with sequence KLLREPCSVQLS, from the C Terminus of the protein sequence according to NP_000948.2; NP_942005.2; NP_942006.1.

Please note the [peptide](#) is available for sale.

Purification and Storage

Purified from goat serum by ammonium sulphate precipitation followed by antigen affinity chromatography using the immunizing peptide.

Supplied at 0.5 mg/ml in Tris saline, 0.02% sodium azide, pH7.3 with 0.5% bovine serum albumin.

Aliquot and store at -20°C. Minimize freezing and thawing.

Applications Tested

Peptide ELISA: antibody detection limit dilution 1:2000.

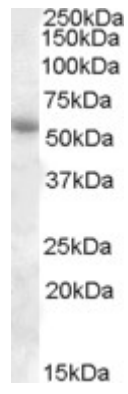
Western blot: Approx 55kDa band observed in Human Adipose, Kidney, Pancreas and Placenta lysates (calculated MW of 47.3kDa according to NP_000948.2). The observed molecular weight corresponds to earlier findings in literature with different antibodies (Sung et al, , Cancer Res. 2005 Oct 15;65(20):9304-11; PMID: 16230392).

Recommended concentration: 1-3µg/ml.

Species Reactivity

Tested: Human

Expected from sequence similarity: Human



EB08205 (1µg/ml) staining of Human Adipose lysate (35µg protein in RIPA buffer). Primary incubation was 1 hour. Detected by chemiluminescence.