



UK Office

Everest Biotech Ltd

Cherwell Innovation Centre
77 Heyford Park
Upper Heyford
Oxfordshire
OX25 5HD
UK

Enquiries:

info@everestbiotech.com

Sales:

sales@everestbiotech.com

Tech support:

support@everestbiotech.com

Tel: +44 (0)1869 238326

www.everestbiotech.com

**Research Use Only. Not for
diagnostic or therapeutic use.**

EB12936 - Goat Anti-PTGR1 Antibody

Size: 100µg specific antibody in 200µl



Target Protein

Principal Names: PTGR1, prostaglandin reductase 1, LTB4DH, PGR1, ZADH3, 15-oxoprostaglandin 13-reductase, NADP-dependent leukotriene B4

12-hydroxydehydrogenase, PRG-1, leukotriene B4 12-hydroxydehydrogenase, zinc binding alcohol dehydrogenase domain containing 3

Official Symbol: PTGR1

Accession Number(s): NP_036344.2; NP_001139581.1

Human GeneID(s): [22949](#)

Important Comments: This antibody is expected to recognize both reported isoforms (NP_036344.2; NP_001139581.1). Reported variants represent identical protein: NP_036344.2, NP_001139580.1.

Immunogen

Peptide with sequence C-PTNSDFELKTAELP, from the internal region (near N terminus) of the protein sequence according to NP_036344.2; NP_001139581.1.

Please note the [peptide](#) is available for sale.

Purification and Storage

Purified from goat serum by ammonium sulphate precipitation followed by antigen affinity chromatography using the immunizing peptide.

Supplied at 0.5 mg/ml in Tris saline, 0.02% sodium azide, pH7.3 with 0.5% bovine serum albumin.

Aliquot and store at -20°C. Minimize freezing and thawing.

Applications Tested

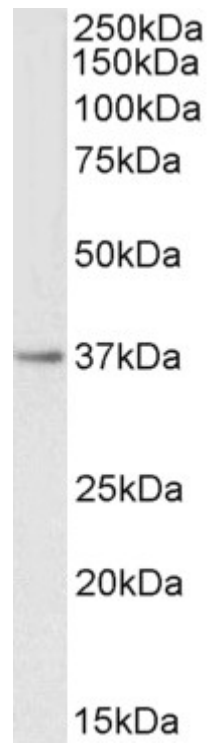
Peptide ELISA: antibody detection limit dilution 1:128000.

Western blot: Approx 37kDa band observed in Human Kidney lysates (calculated MW of 35.9kDa according to NP_036344.2). Recommended concentration: 0.3-1µg/ml.

Species Reactivity

Tested: Human

Expected from sequence similarity: Human



EB12936 (0.3 μ g/ml) staining of Human Kidney lysate (35 μ g protein in RIPA buffer). Primary incubation was 1 hour. Detected by chemiluminescence.