



UK Office

Everest Biotech Ltd

Cherwell Innovation Centre
77 Heyford Park
Upper Heyford
Oxfordshire
OX25 5HD
UK

Enquiries:

info@everestbiotech.com

Sales:

sales@everestbiotech.com

Tech support:

support@everestbiotech.com

Tel: +44 (0)1869 238326

Fax: +44 (0)1869 238327

US Office

Everest Biotech c/o Abcore

405 Maple Street, Suite A106
Ramona,
CA 92065
USA

Inquiries:

info@everestbiotech.com

Sales:

usasales@everestbiotech.com

Tech support:

support@everestbiotech.com

Tel: 888-320-4628 (toll-free)

Fax: 888-841-9041

www.everestbiotech.com

**Research Use Only. Not for
diagnostic or therapeutic use.**

EB07724-T - Goat Anti-PTPN6 / SHP1 (internal) Antibody - Trial

Size: 20µg specific antibody in 40µl



Target Protein

Principal Names: PTPN6, SHP1, protein tyrosine phosphatase, non-receptor type 6, HCP, HCPH, HPTP1C, PTP-1C, SH-PTP1, SHP-1, SHP-1L, 70 kda SHP-1L protein, hematopoietic cell phosphatase, hematopoietic cell protein-tyrosine phosphatase, protein-tyrosine phosphatase 1C

Official Symbol: PTPN6

Accession Number(s): NP_536858.1; NP_002822.2

Human GeneID(s): [5777](#)

Important Comments: This antibody is expected to recognise both reported isoforms (NP_536858.1 and NP_002822.2)

Immunogen

Peptide with sequence C-HTKNKREEKVKKQ, from the internal region (near the C Terminus) of the protein sequence according to NP_536858.1; NP_002822.2.

Please note the [peptide](#) is available for sale.

Purification and Storage

Purified from goat serum by ammonium sulphate precipitation followed by antigen affinity chromatography using the immunizing peptide.

Supplied at 0.5 mg/ml in Tris saline, 0.02% sodium azide, pH7.3 with 0.5% bovine serum albumin.

Aliquot and store at -20°C. Minimize freezing and thawing.

Applications Tested

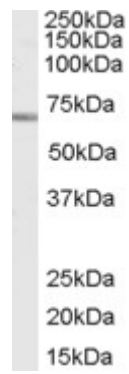
Peptide ELISA: antibody detection limit dilution 1:128000.

Western blot: Approx 70kDa band observed in lysates of cell lines Jurkat and U937 (calculated MW of 67.7kDa according to NP_536858.1 and 67.6kDa according to NP_002822.2). Recommended concentration: 0.2-0.5µg/ml.

Species Reactivity

Tested: Human

Expected from sequence similarity: Human



EB07724 (0.2µg/ml) staining of Jurkat cell lysate (35µg protein in RIPA buffer). Primary incubation was 1 hour.
Detected by chemiluminescence.