



## UK Office

### Everest Biotech Ltd

Cherwell Innovation Centre  
77 Heyford Park  
Upper Heyford  
Oxfordshire  
OX25 5HD  
UK

Enquiries:

[info@everestbiotech.com](mailto:info@everestbiotech.com)

Sales:

[sales@everestbiotech.com](mailto:sales@everestbiotech.com)

Tech support:

[support@everestbiotech.com](mailto:support@everestbiotech.com)

Tel: +44 (0)1869 238326

[www.everestbiotech.com](http://www.everestbiotech.com)

**Research Use Only. Not for  
diagnostic or therapeutic use.**

## EB10158 - Goat Anti-PTPRB Antibody

Size: 100µg specific antibody in 200µl



### Target Protein

**Principal Names:** DKFZp686E2262, DKFZp686H15164, FLJ44133, HPTPB, HPTP-BETA, MGC142023, MGC59935, protein tyrosine phosphatase, receptor type, B, protein tyrosine phosphatase, receptor type, beta polypeptide, PTPB, R-PTP-BETA, VEPTP, PTPRB

**Official Symbol:** PTPRB

**Accession Number(s):** NP\_001103224.1; NP\_002828.3; NP\_001193901.1

**Human GeneID(s):** [5787](#)

**Non-Human GeneID(s):** 314843 (rat)

### Immunogen

Peptide with sequence C-ENHSFSQERTVPDK, from the internal region of the protein sequence according to NP\_001103224.1; NP\_002828.3; NP\_001193901.1.

Please note the [peptide](#) is available for sale.

### Purification and Storage

Purified from goat serum by ammonium sulphate precipitation followed by antigen affinity chromatography using the immunizing peptide.

Supplied at 0.5 mg/ml in Tris saline, 0.02% sodium azide, pH7.3 with 0.5% bovine serum albumin.

Aliquot and store at -20°C. Minimize freezing and thawing.

### Applications Tested

**Peptide ELISA:** antibody detection limit dilution 1:16000.

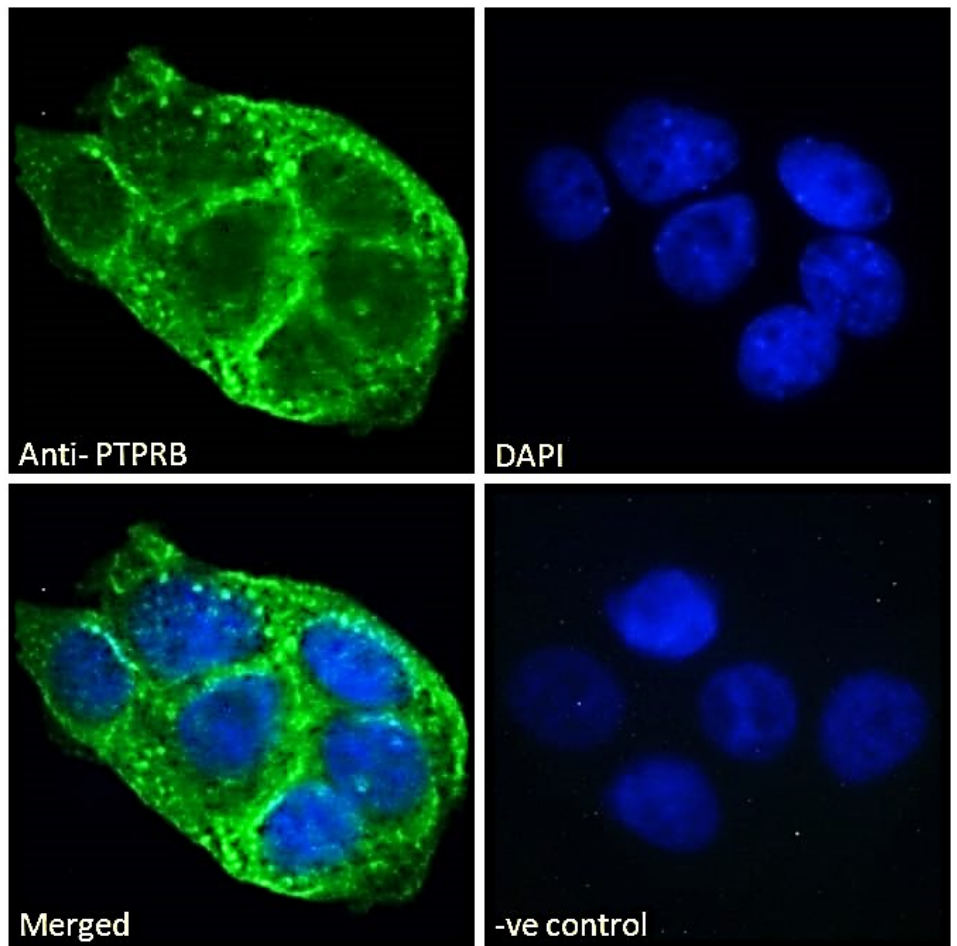
**Immunofluorescence:** Strong expression of the protein seen in the membranes and vesicles of A431 cells. Recommended concentration: 10µg/ml.

**Flow Cytometry:** Flow cytometric analysis of A431 cells. Recommended concentration: 10ug/ml.

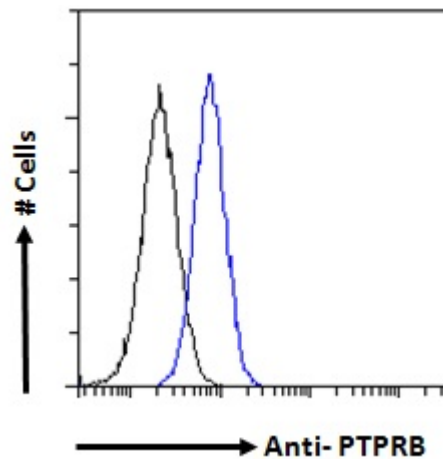
### Species Reactivity

**Tested:** Human

**Expected from sequence similarity:** Human, Rat, Pig, Dog, Cow



EB10158 Immunofluorescence analysis of paraformaldehyde fixed A431 cells, permeabilized with 0.15% Triton. Primary incubation 1hr (10ug/ml) followed by Alexa Fluor 488 secondary antibody (2ug/ml), showing membrane and vesicle staining. The nuclear stain is DAPI (blue). Negative control: Unimmunized goat IgG (10ug/ml) followed by Alexa Fluor 488 secondary antibody (2ug/ml).



EB10158 Flow cytometric analysis of paraformaldehyde fixed A431 cells (blue line), permeabilized with 0.5% Triton. Primary incubation 1hr (10ug/ml) followed by Alexa Fluor 488 secondary antibody (1ug/ml). IgG control: Unimmunized goat IgG (black line) followed by Alexa Fluor 488 secondary antibody.