

## UK Office

### Everest Biotech Ltd

Cherwell Innovation Centre  
77 Heyford Park  
Upper Heyford  
Oxfordshire  
OX25 5HD  
UK

Enquiries:

[info@everestbiotech.com](mailto:info@everestbiotech.com)

Sales:

[sales@everestbiotech.com](mailto:sales@everestbiotech.com)

Tech support:

[support@everestbiotech.com](mailto:support@everestbiotech.com)

Tel: +44 (0)1869 238326

[www.everestbiotech.com](http://www.everestbiotech.com)

**Research Use Only. Not for  
diagnostic or therapeutic use.**

## EB08429 - Goat Anti-PU.1 Antibody

Size: 100µg specific antibody in 200µl



### Target Protein

**Principal Names:** PU.1, SPI1, spleen focus forming virus (SFFV) proviral integration oncogene spi1, hCG\_25181, SFPI1, SPI-1, SPI-A, 31 kDa transforming protein, SPI-1 proto-oncogene, hematopoietic transcription factor PU.1

**Official Symbol:** SPI1

**Accession Number(s):** NP\_001074016.1; NP\_003111.2

**Human GeneID(s):** [6688](#)

**Non-Human GeneID(s):** 366126 (rat)

**Important Comments:** This antibody is expected to recognise both reported isoforms (NP\_001074016.1; NP\_003111.2).

### Immunogen

Peptide with sequence C-DLYQRQTHEY, from the internal region of the protein sequence according to NP\_001074016.1; NP\_003111.2.

Please note the [peptide](#) is available for sale.

### Purification and Storage

Purified from goat serum by ammonium sulphate precipitation followed by antigen affinity chromatography using the immunizing peptide.

Supplied at 0.5 mg/ml in Tris saline, 0.02% sodium azide, pH7.3 with 0.5% bovine serum albumin.

Aliquot and store at -20°C. Minimize freezing and thawing.

### Applications Tested

**Peptide ELISA:** antibody detection limit dilution 1:32000.

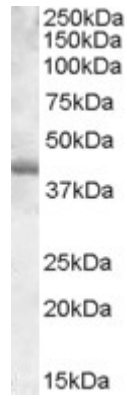
**Western blot:** Approx 40kDa band observed in lysates of DAUDI and K562 (calculated MW of 31.2kDa according to NP\_001074016.1 and of 31.1kDa according to NP\_003111.2). The observed molecular weight corresponds to earlier findings in literature with different antibodies (Harendza S et al, J Biol Chem. 2000 Jun 30;275(26):19552-9.; PMID: 10867017). Recommended concentration: 0.03-0.1µg/ml. Primary incubation was 1 hour.

**IHC:** Paraffin embedded Human Spleen and Colon (lymphoid aggregate). Recommended concentration: 3.75µg/ml.

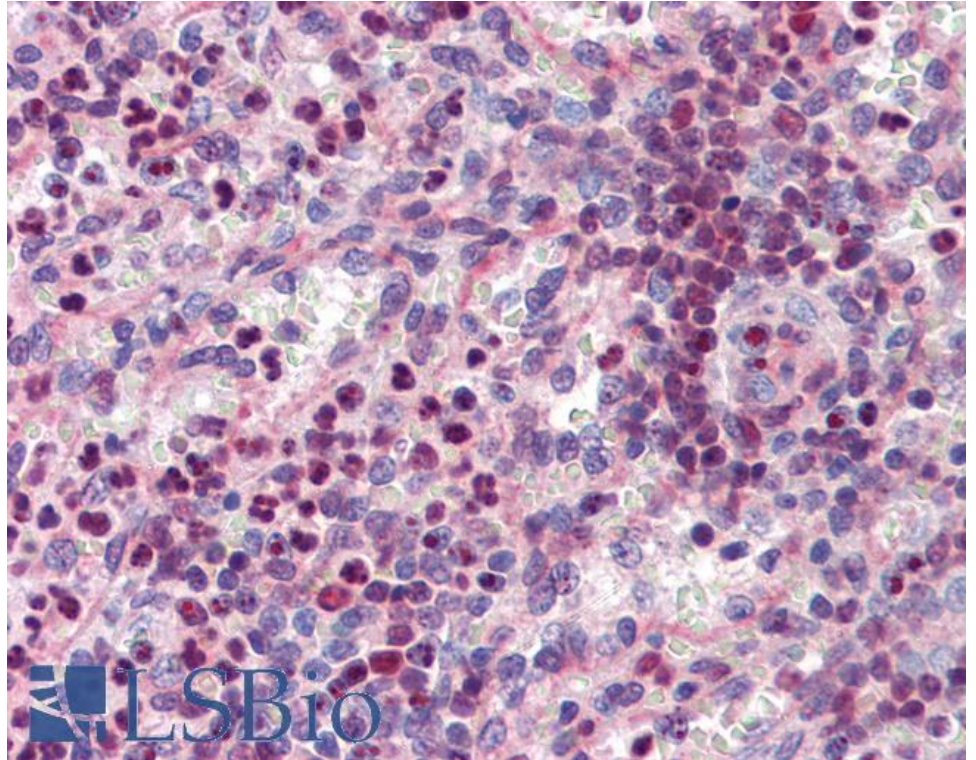
### Species Reactivity

**Tested:** Human

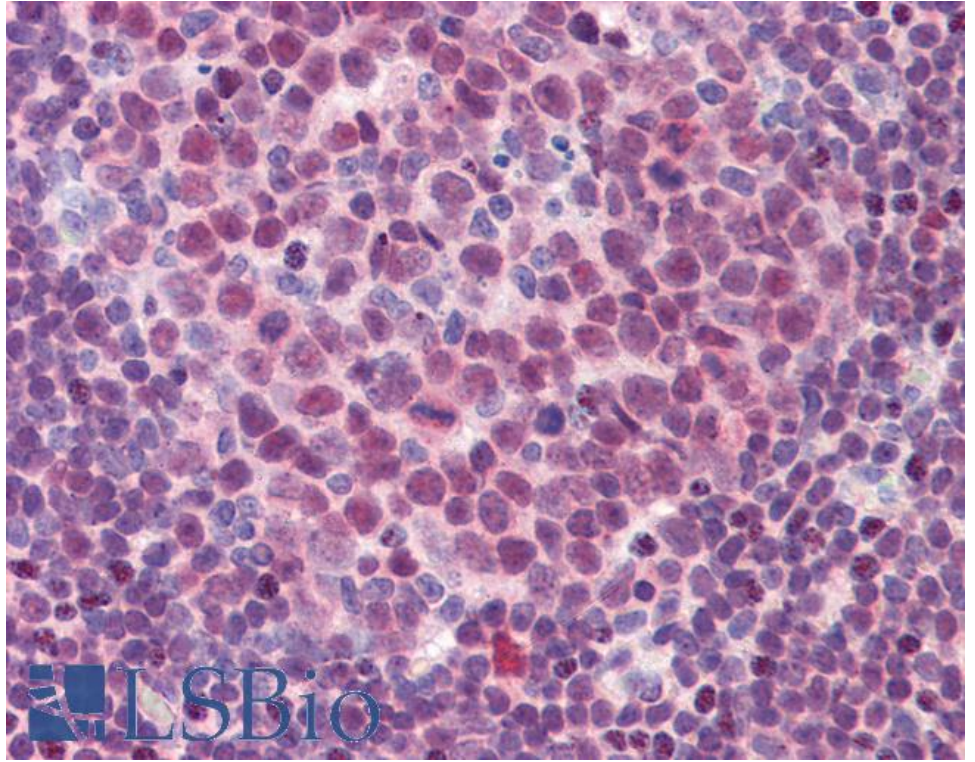
**Expected from sequence similarity:** Human, Rat



EB08429 (0.03 $\mu$ g/ml) staining of DAUDI lysate (35 $\mu$ g protein in RIPA buffer). Detected by chemiluminescence.



EB08429 (3.75 $\mu$ g/ml) staining of paraffin embedded Human Spleen. Steamed antigen retrieval with citrate buffer pH 6, AP-staining.



EB08429 (3.75 $\mu$ g/ml) staining of paraffin embedded Human Colon. Steamed antigen retrieval with citrate buffer pH 6, AP-staining.