



## UK Office

### Everest Biotech Ltd

Cherwell Innovation Centre  
77 Heyford Park  
Upper Heyford  
Oxfordshire  
OX25 5HD  
UK

Enquiries:

[info@everestbiotech.com](mailto:info@everestbiotech.com)

Sales:

[sales@everestbiotech.com](mailto:sales@everestbiotech.com)

Tech support:

[support@everestbiotech.com](mailto:support@everestbiotech.com)

Tel: +44 (0)1869 238326

Fax: +44 (0)1869 238327

## US Office

### Everest Biotech c/o Abcore

405 Maple Street, Suite A106  
Ramona,  
CA 92065  
USA

Inquiries:

[info@everestbiotech.com](mailto:info@everestbiotech.com)

Sales:

[usasales@everestbiotech.com](mailto:usasales@everestbiotech.com)

Tech support:

[support@everestbiotech.com](mailto:support@everestbiotech.com)

Tel: 888-320-4628 (toll-free)

Fax: 888-841-9041

[www.everestbiotech.com](http://www.everestbiotech.com)

**Research Use Only. Not for  
diagnostic or therapeutic use.**

## EB09172 - Goat Anti-PXR / NR1I2 Antibody

Size: 100µg specific antibody in 200µl



### Target Protein

**Principal Names:** PXR, NR1I2, nuclear receptor subfamily 1, group I, member 2, BXR, ONR1, PAR, PAR1, PAR2, PARq, PRR, SAR, SXR, orphan nuclear receptor, pregnane X receptor, steroid and xenobiotic receptor

**Official Symbol:** NR1I2

**Accession Number(s):** NP\_003880.3; NP\_071285.1; NP\_148934.1

**Human GeneID(s):** [8856](#)

**Important Comments:** This antibody is expected to recognize all reported isoforms (NP\_071285.1; NP\_148934.1; NP\_003880.3).

### Immunogen

Peptide with sequence EQFAITLKSYLECNR, from the internal region of the protein sequence according to NP\_003880.3; NP\_071285.1; NP\_148934.1.

Please note the [peptide](#) is available for sale.

### Purification and Storage

Purified from goat serum by ammonium sulphate precipitation followed by antigen affinity chromatography using the immunizing peptide.

Supplied at 0.5 mg/ml in Tris saline, 0.02% sodium azide, pH7.3 with 0.5% bovine serum albumin.

Aliquot and store at -20°C. Minimize freezing and thawing.

### Applications Tested

**Peptide ELISA:** antibody detection limit dilution 1:4000.

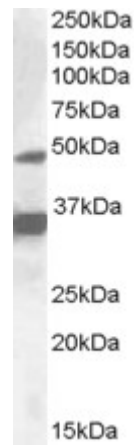
**Western blot:** Approx. 48kDa band observed in lysates of cell line HepG2 (calculated MW of 49.8kDa according to NP\_003880.3). Recommended concentration: 1-3µg/ml. An additional band of unknown identity was also consistently observed at 35kDa. This band was successfully blocked by incubation with the immunizing peptide. Primary incubation was 1 hour.

**IHC:** Paraffin embedded Human Small Intestine. Recommended concentration: 3.75µg/ml.

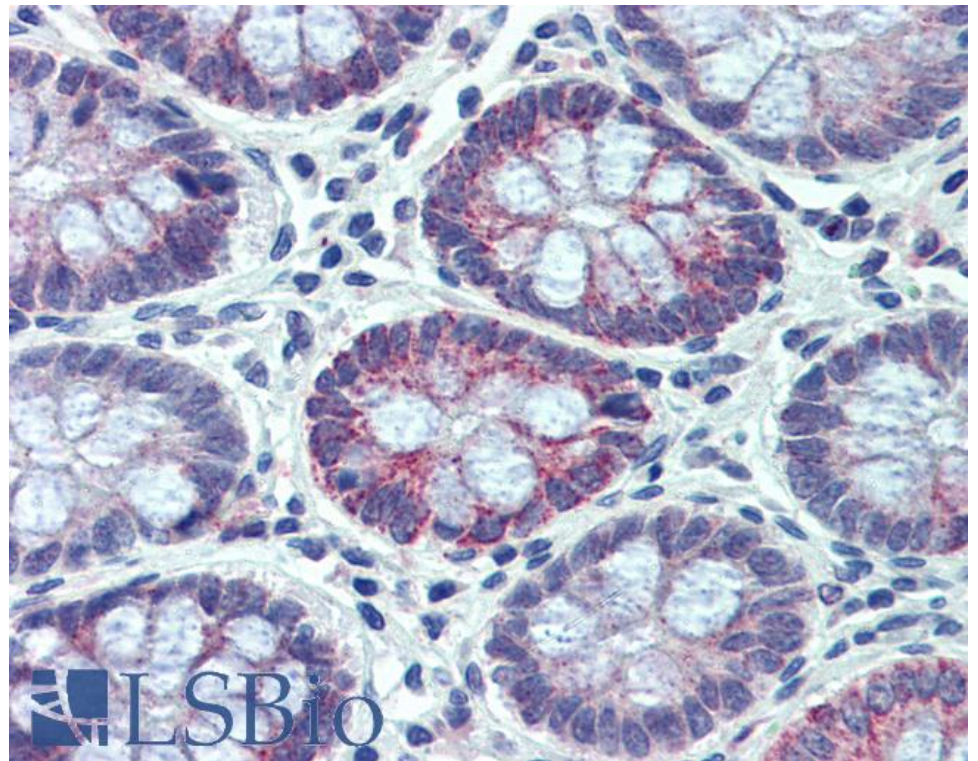
### Species Reactivity

**Tested:** Human

**Expected from sequence similarity:** Human



EB09172 (1 $\mu$ g/ml) staining of HepG2 lysate (35 $\mu$ g protein in RIPA buffer). Detected by chemiluminescence.



EB09172 (3.75 $\mu$ g/ml) staining of paraffin embedded Human Small Intestine. Steamed antigen retrieval with citrate buffer pH 6, AP-staining.