



UK Office

Everest Biotech Ltd

Cherwell Innovation Centre
77 Heyford Park
Upper Heyford
Oxfordshire
OX25 5HD
UK

Enquiries:

info@everestbiotech.com

Sales:

sales@everestbiotech.com

Tech support:

support@everestbiotech.com

Tel: +44 (0)1869 238326

www.everestbiotech.com

**Research Use Only. Not for
diagnostic or therapeutic use.**

EB08310 - Goat Anti-Pyruvate Carboxylase Antibody

Size: 100µg specific antibody in 200µl



Target Protein

Principal Names: PC, pyruvate carboxylase, PCB

Official Symbol: PC

Accession Number(s): NP_000911.2; NP_001035806.1; NP_071504.2

Human GeneID(s): [5091](#)

Non-Human GeneID(s): 18563 (mouse), 25104 (rat)

Important Comments: All reported variants (NP_000911.2; NP_001035806.1; NP_071504.2) represent identical protein.

Immunogen

Peptide with sequence C-KFKEVKKAYVEANQ, from the internal region of the protein sequence according to NP_000911.2; NP_001035806.1; NP_071504.2.

Please note the [peptide](#) is available for sale.

Purification and Storage

Purified from goat serum by ammonium sulphate precipitation followed by antigen affinity chromatography using the immunizing peptide.

Supplied at 0.5 mg/ml in Tris saline, 0.02% sodium azide, pH7.3 with 0.5% bovine serum albumin.

Aliquot and store at -20°C. Minimize freezing and thawing.

Applications Tested

Peptide ELISA: antibody detection limit dilution 1:16000.

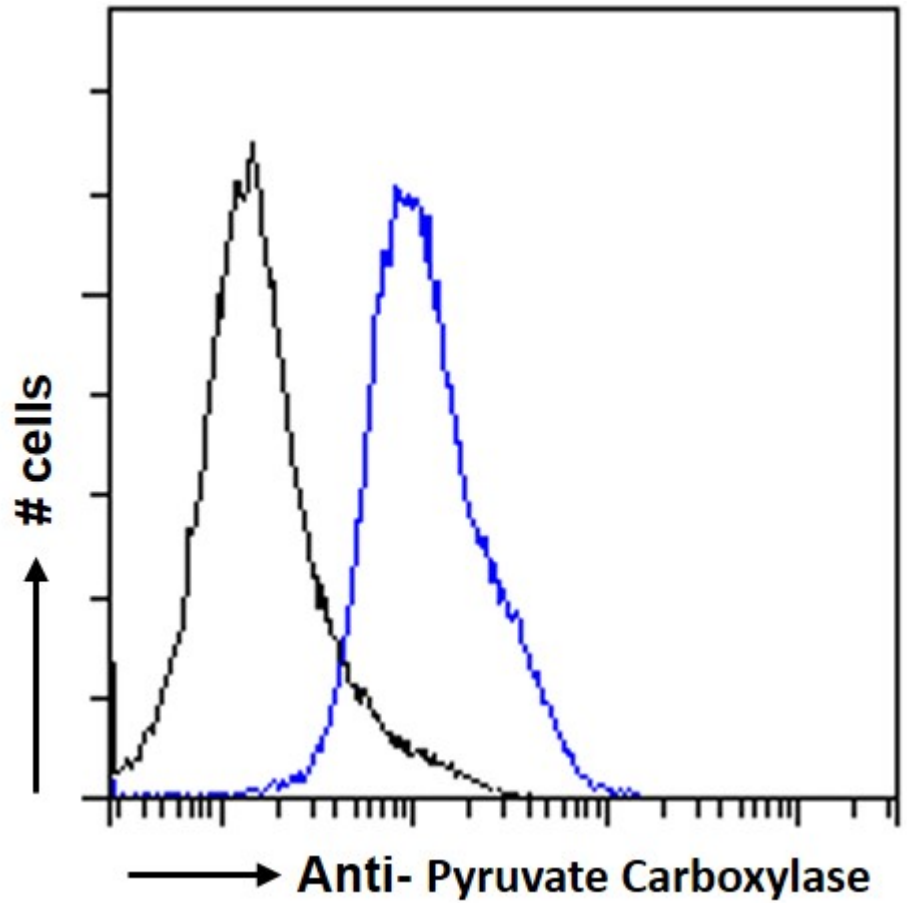
IHC: Paraffin embedded Human Liver. Recommended concentration: 5µg/ml.

Flow Cytometry: Flow cytometric analysis of HeLa cells. Recommended concentration: 10ug/ml.

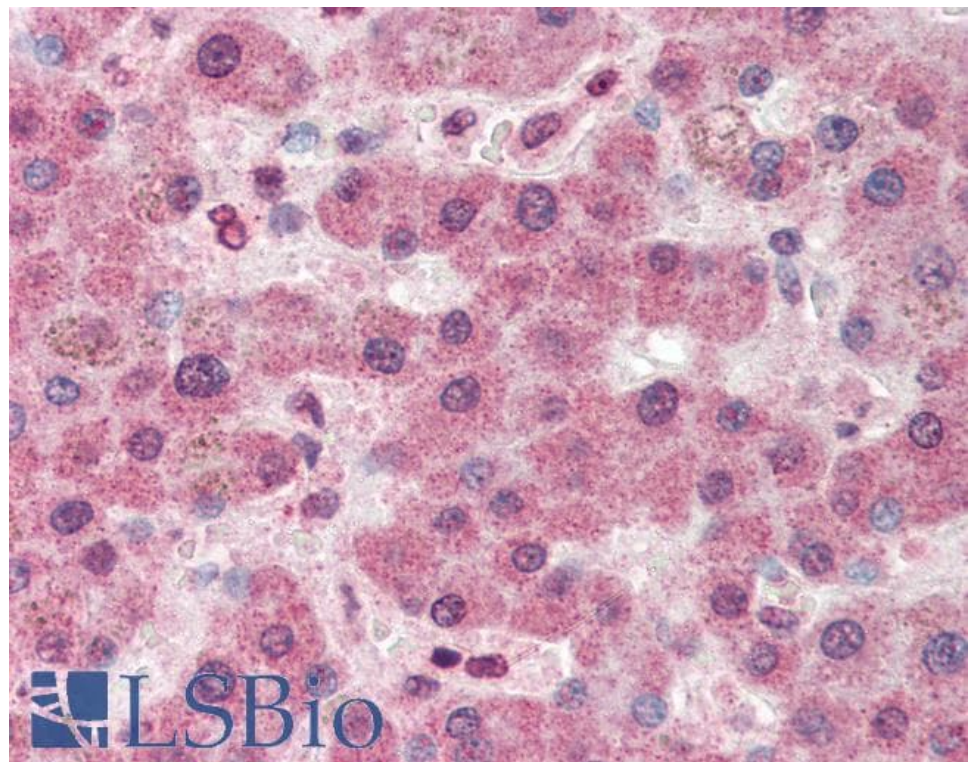
Species Reactivity

Tested: Human

Expected from sequence similarity: Human, Mouse, Rat, Dog, Cow, Pig



EB08310 Flow cytometric analysis of paraformaldehyde fixed HeLa cells (blue line), permeabilized with 0.5% Triton. Primary incubation 1hr (10ug/ml) followed by Alexa Fluor 488 secondary antibody (1ug/ml). IgG control: Unimmunized goat IgG (black line) followed by Alexa Fluor 488 secondary antibody.



EB08310 (5µg/ml) staining of paraffin embedded Human Liver. Steamed antigen retrieval with citrate buffer pH 6, AP-staining.