



UK Office

Everest Biotech Ltd

Cherwell Innovation Centre
77 Heyford Park
Upper Heyford
Oxfordshire
OX25 5HD
UK

Enquiries:

info@everestbiotech.com

Sales:

sales@everestbiotech.com

Tech support:

support@everestbiotech.com

Tel: +44 (0)1869 238326

Fax: +44 (0)1869 238327

US Office

Everest Biotech c/o Abcore

405 Maple Street, Suite A106
Ramona,
CA 92065
USA

Inquiries:

info@everestbiotech.com

Sales:

usasales@everestbiotech.com

Tech support:

support@everestbiotech.com

Tel: 888-320-4628 (toll-free)

Fax: 888-841-9041

www.everestbiotech.com

**Research Use Only. Not for
diagnostic or therapeutic use.**

EB06897 - Goat Anti-RAB11FIP1 / RCP Antibody

Size: 100µg specific antibody in 200µl



Target Protein

Principal Names: RAB11FIP1, RAB11 family interacting protein 1 (class I), HGNC:30265, FLJ22524, FLJ22622, MGC78448, NOEL1A, RCP, rab11-FIP1, Rab coupling protein, Rab effector protein, Rab-interacting recycling protein, Rab11-family interacting protein 1D, no Rab11-binding protein 1A, DKFZp686E2214, RAB11 coupling protein, RAB11 family interacting protein 1

Official Symbol: RAB11FIP1

Accession Number(s): NP_079427.3; NP_001002814.1

Human GeneID(s): [80223](#)

Important Comments: This antibody is expected to recognise isoform 1 (NP_079427.3) and isoform 3 (NP_001002814.1).

Immunogen

Peptide with sequence C-EATKEAKESKKPE, from the internal region of the protein sequence according to NP_079427.3; NP_001002814.1.

Please note the [peptide](#) is available for sale.

Purification and Storage

Purified from goat serum by ammonium sulphate precipitation followed by antigen affinity chromatography using the immunizing peptide.

Supplied at 0.5 mg/ml in Tris saline, 0.02% sodium azide, pH7.3 with 0.5% bovine serum albumin.

Aliquot and store at -20°C. Minimize freezing and thawing.

Applications Tested

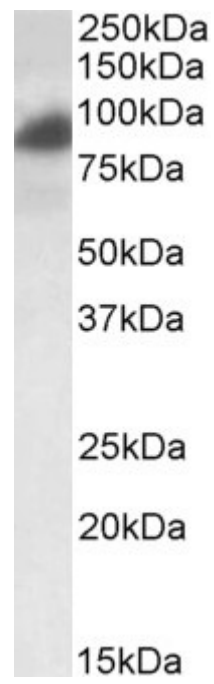
Peptide ELISA: antibody detection limit dilution 1:64000.

Western blot: Approx 80kDa band observed in lysates of cell line HeLa (calculated MW of 71.0kDa according to NP_079427.3). The observed molecular weight of 80kDa corresponds to earlier findings in literature with different antibodies (Lindsay et al, J Biol Chem. 2002 Apr 5;277(14):12190-9. PMID 11786538.). Recommended concentration: 0.1-0.3µg/ml.

Species Reactivity

Tested: Human

Expected from sequence similarity: Human



EB06897 (0.2 μ g/ml) staining of HeLa lysate (35 μ g protein in RIPA buffer). Primary incubation was 1 hour.
Detected by chemiluminescence.