

UK Office

Everest Biotech Ltd

Cherwell Innovation Centre
77 Heyford Park
Upper Heyford
Oxfordshire
OX25 5HD
UK

Enquiries:

info@everestbiotech.com

Sales:

sales@everestbiotech.com

Tech support:

support@everestbiotech.com

Tel: +44 (0)1869 238326

www.everestbiotech.com

**Research Use Only. Not for
diagnostic or therapeutic use.**

EB08315 - Goat Anti-RAB23 Antibody

Size: 100µg specific antibody in 200µl



Target Protein

Principal Names: RAB23, RAB23, member RAS oncogene family, RP3-496N17.3, DKFZp781H0695, HSPC137, MGC8900, OTTHUMP00000040021, RAB family small GTP binding protein RAB 23, Ras-related protein Rab-23

Official Symbol: RAB23

Accession Number(s): NP_057361.3; NP_899050.1

Human GeneID(s): [51715](#)

Non-Human GeneID(s): 19335 (mouse), 367242 (rat)

Important Comments: Both reported variants (NP_057361.3; NP_899050.1) represent identical protein.

Immunogen

Peptide with sequence C-PNKQRTKKNRNP, from the C Terminus of the protein sequence according to NP_057361.3; NP_899050.1.

Please note the [peptide](#) is available for sale.

Purification and Storage

Purified from goat serum by ammonium sulphate precipitation followed by antigen affinity chromatography using the immunizing peptide.

Supplied at 0.5 mg/ml in Tris saline, 0.02% sodium azide, pH7.3 with 0.5% bovine serum albumin.

Aliquot and store at -20°C. Minimize freezing and thawing.

Applications Tested

Peptide ELISA: antibody detection limit dilution 1:64000.

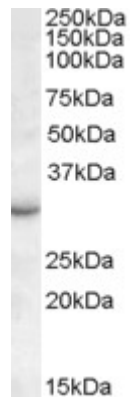
Western blot: Approx 30kDa band observed in Mouse Eye lysates (calculated MW of 26.7kDa according to Human NP_057361.3 and 26.8kDa according to Mouse NP_033025.2). This molecular weight is routinely observed by other sources.

Recommended concentration: 1-3µg/ml. Recommended concentration: 1-3µg/ml.

Species Reactivity

Tested: Mouse

Expected from sequence similarity: Human, Mouse, Rat, Dog



EB08315 (0.1 μ g/ml) staining of Mouse Eye lysate (35 μ g protein in RIPA buffer). Primary incubation was 1 hour.
Detected by chemiluminescence.