



Everest Biotech Ltd
Cherwell Innovation Centre
77 Heyford Park
Upper Heyford
Oxfordshire
OX25 5HD, United Kingdom

everestbiotech.com

sales@everestbiotech.com

support@everestbiotech.com

Tel +44 1869 238326

Fax +44 1869 238327

Research Use Only. Not for diagnostic or therapeutic use.

Storage: For long-term storage keep aliquots at -20°C. (Store no longer than 12 months at 4°C). Minimize freezing and thawing.

EB05314 - Goat Anti-RAC2 Antibody

Size: 100µg specific antibody in 200µl



Target Protein

Principal Names: small G protein, HSPC022, Gx, Ras-related C3 botulinum toxin substrate 3 (rho family, small GTP-binding protein Rac2), rho family, small GTP binding protein Rac2, Ras-related C3 botulinum toxin substrate 2, EN-7, ras-related C3 botulinum toxin substrate 2 (rho family, small GTP binding protein Rac2), RAC2

Official Symbol: RAC2

Accession Number(s): NP_002863.1

Human GeneID(s): [5880](#)

Immunogen

Peptide with sequence PQPTRQQKRACSLI, from the C Terminus of the protein sequence according to NP_002863.1.

Please note the [peptide](#) is available for sale.

Purification and Storage

Purified from goat serum by ammonium sulphate precipitation followed by antigen affinity chromatography using the immunizing peptide.

Supplied at 0.5 mg/ml in Tris saline, 0.02% sodium azide, pH7.3 with 0.5% bovine serum albumin.

Aliquot and store at -20°C. Minimize freezing and thawing.

Applications Tested

Peptide ELISA: antibody detection limit dilution 1:32000.

Western blot: Approx 20kDa band observed in lysates of Human Tonsil lysate (calculated MW of 21.4kDa according to NP_002863.1). Recommended concentration: 0.1-1µg/ml.

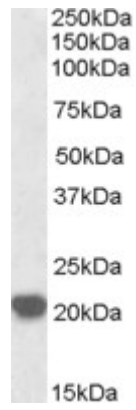
IHC: In paraffin embedded Human Tonsil, stains most cells in the mantle zone and interfollicular area. In the germinal centres the majority of cells are negative.

Recommended concentration 0.3ug/ml. Data were obtained from a previous batch.

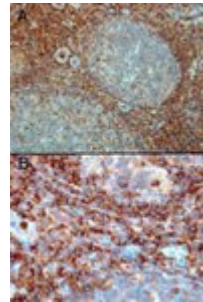
Species Reactivity

Tested: Human

Expected from sequence similarity: Human, Mouse, Rat



EB05314 staining (0.3 μ g/ml) of Human Tonsil lysate (RIPA buffer, 35 μ g total protein per lane). Primary incubated for 1 hour. Detected by western blot using chemiluminescence.



EB05314 (0.3 μ g/ml) staining of paraffin embedded Human Tonsil. Microwaved antigen retrieval with Tris/EDTA buffer pH9, HRP-staining. A) Strong staining in the interfollicular area and mantle zone. B) Positive cells in the interfollicular area.