



UK Office

Everest Biotech Ltd

Cherwell Innovation Centre
77 Heyford Park
Upper Heyford
Oxfordshire
OX25 5HD
UK

Enquiries:

info@everestbiotech.com

Sales:

sales@everestbiotech.com

Tech support:

support@everestbiotech.com

Tel: +44 (0)1869 238326

Fax: +44 (0)1869 238327

US Office

Everest Biotech c/o Abcore

405 Maple Street, Suite A106
Ramona,
CA 92065
USA

Inquiries:

info@everestbiotech.com

Sales:

usasales@everestbiotech.com

Tech support:

support@everestbiotech.com

Tel: 888-320-4628 (toll-free)

Fax: 888-841-9041

www.everestbiotech.com

**Research Use Only. Not for
diagnostic or therapeutic use.**

EB07550 - Goat Anti-RAD9A Antibody

Size: 100µg specific antibody in 200µl



Target Protein

Principal Names: RAD9A, RAD9 homolog A (S. pombe), RAD9, RAD9 (S. pombe) homolog, RAD9 homolog, RAD9 homolog (S. pombe), cell cycle checkpoint control protein

Official Symbol: RAD9A

Accession Number(s): NP_004575.1

Human GeneID(s): [5883](#)

Non-Human GeneID(s): 19367 (mouse)

Immunogen

Peptide with sequence C-QGPSPVLAEDSEGE, from the C Terminus of the protein sequence according to NP_004575.1.

Please note the [peptide](#) is available for sale.

Purification and Storage

Purified from goat serum by ammonium sulphate precipitation followed by antigen affinity chromatography using the immunizing peptide.

Supplied at 0.5 mg/ml in Tris saline, 0.02% sodium azide, pH7.3 with 0.5% bovine serum albumin.

Aliquot and store at -20°C. Minimize freezing and thawing.

Applications Tested

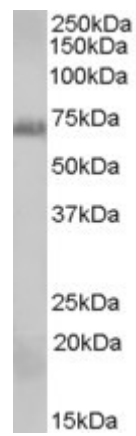
Peptide ELISA: antibody detection limit dilution 1:32000.

Western blot: Approx 70kDa band observed in lysates of cell lines A431 and Daudi (calculated MW of 42.5kDa according to NP_004575.1). The observed molecular weight corresponds to earlier findings in literature with different antibodies (Volkmer et al, J Biol Chem. 1999 Jan 8;274(2):567-70.; PMID: 9872989). Recommended concentration: 0.3-1µg/ml.

Species Reactivity

Tested: Human

Expected from sequence similarity: Human, Mouse, Dog



EB07550 (0.3 μ g/ml) staining of A431 cell lysate (35 μ g protein in RIPA buffer). Primary incubation was 1 hour.
Detected by chemiluminescence.