



UK Office

Everest Biotech Ltd

Cherwell Innovation Centre
77 Heyford Park
Upper Heyford
Oxfordshire
OX25 5HD
UK

Enquiries:

info@everestbiotech.com

Sales:

sales@everestbiotech.com

Tech support:

support@everestbiotech.com

Tel: +44 (0)1869 238326

Fax: +44 (0)1869 238327

US Office

Everest Biotech c/o Abcore

405 Maple Street, Suite A106
Ramona,
CA 92065
USA

Inquiries:

info@everestbiotech.com

Sales:

usasales@everestbiotech.com

Tech support:

support@everestbiotech.com

Tel: 888-320-4628 (toll-free)

Fax: 888-841-9041

www.everestbiotech.com

**Research Use Only. Not for
diagnostic or therapeutic use.**

EB10644 - Goat Anti-RAN (aa 197-210) Antibody

Size: 100µg specific antibody in 200µl



Target Protein

Principal Names: RAN, RAN, member RAS oncogene family, ARA24, Gsp1, TC4, GTP-binding nuclear protein Ran, GTPase Ran, OK/SW-cl.81, OTTHUMP00000166078, RanGTPase, androgen receptor-associated protein 24, guanosine triphosphatase Ran, member RAS oncogene

Official Symbol: RAN

Accession Number(s): NP_006316.1

Human GeneID(s): [5901](#)

Non-Human GeneID(s): 19384 (mouse), 84509 (rat)

Immunogen

Peptide with sequence C-YEHDLEVAQTTALP, from the C Terminus of the protein sequence according to NP_006316.1.

Please note the [peptide](#) is available for sale.

Purification and Storage

Purified from goat serum by ammonium sulphate precipitation followed by antigen affinity chromatography using the immunizing peptide.

Supplied at 0.5 mg/ml in Tris saline, 0.02% sodium azide, pH7.3 with 0.5% bovine serum albumin.

Aliquot and store at -20°C. Minimize freezing and thawing.

Applications Tested

Peptide ELISA: antibody detection limit dilution 1:8000.

Western blot: Approx 25kDa band observed in Human, Mouse and Rat Testis lysates (calculated MW of 24.4kDa according to NP_006316.1). Recommended concentration: 0.1-1µg/ml. Primary incubation was 1 hour.

Immunofluorescence: Strong expression of the protein seen in the cytoplasm and nuclei of A431 cells. Recommended concentration: 10µg/ml.

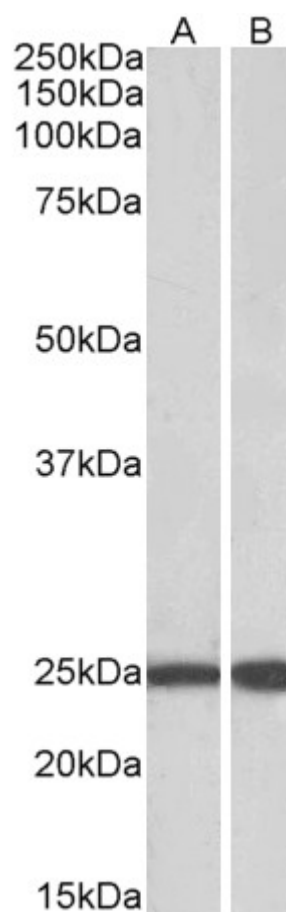
Species Reactivity

Tested: Human, Mouse, Rat

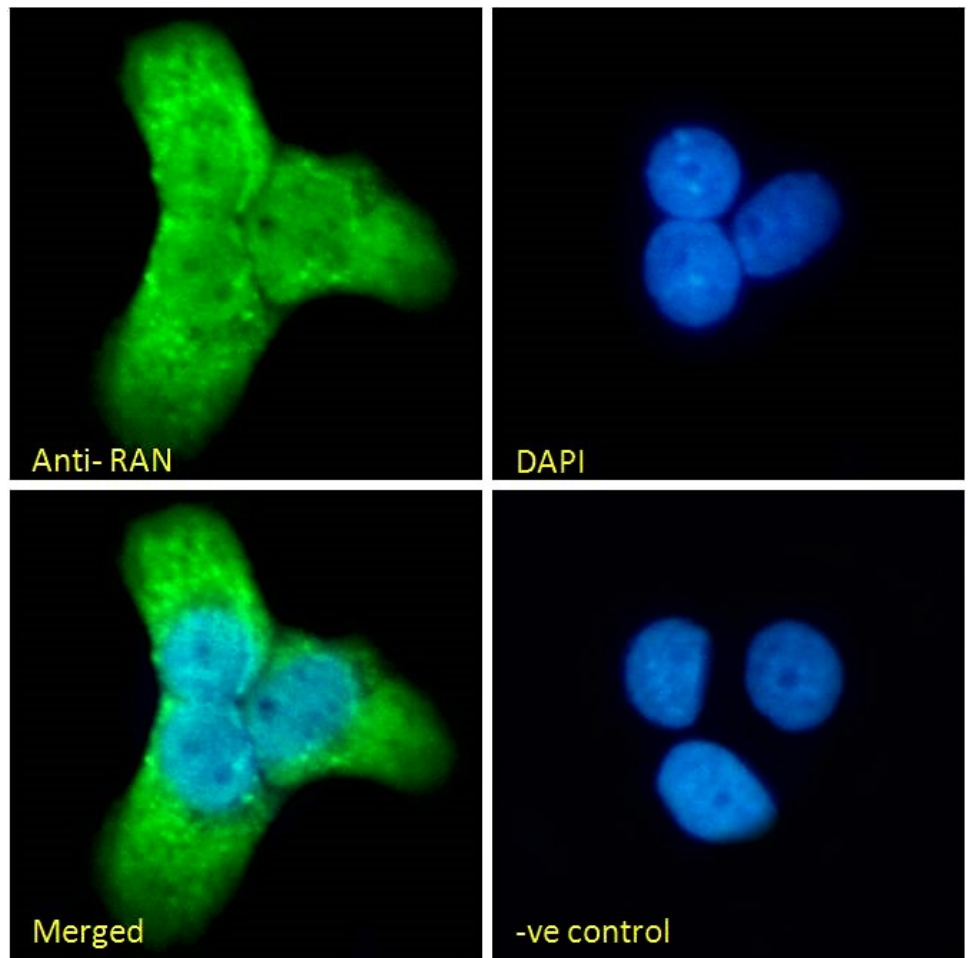
Expected from sequence similarity: Human, Mouse, Rat, Cow



EB10644 (1µg/ml) staining of Human Testis lysate (35µg protein in RIPA buffer). Detected by chemiluminescence.



EB10644 (0.1µg/ml) staining of Mouse (A) and Rat (B) Testis lysate (35µg protein in RIPA buffer). Detected by chemiluminescence.



EB10644 Immunofluorescence analysis of paraformaldehyde fixed A431 cells, permeabilized with 0.15% Triton. Primary incubation 1hr (10ug/ml) followed by Alexa Fluor 488 secondary antibody (2ug/ml), showing nuclear and cytoplasmic staining. The nuclear stain is DAPI (blue). Negative control: Unimmunized goat IgG (10ug/ml) followed by Alexa Fluor 488 secondary antibody (2ug/ml).