

UK Office

Everest Biotech Ltd

Cherwell Innovation Centre
77 Heyford Park
Upper Heyford
Oxfordshire
OX25 5HD
UK

Enquiries:

info@everestbiotech.com

Sales:

sales@everestbiotech.com

Tech support:

support@everestbiotech.com

Tel: +44 (0)1869 238326

www.everestbiotech.com

**Research Use Only. Not for
diagnostic or therapeutic use.**

EB09510 - Goat Anti-RAPSN / Rapsyn Antibody

Size: 100µg specific antibody in 200µl



Target Protein

Principal Names: RAPSN, receptor-associated protein of the synapse, CMS1D, CMS1E, MGC3597, RNF205, 43 kD receptor-associated protein of the synapse, 43 kda postsynaptic protein, acetylcholine receptor-associated 43 kda protein, rapsyn, receptor-associated protein of the synapse, 43kD

Official Symbol: RAPSN

Accession Number(s): NP_005046.2; NP_116034.2

Human GeneID(s): [5913](#)

Important Comments: This antibody is expected to recognize both reported isoforms (NP_005046.2; NP_116034.2).

Immunogen

Peptide with sequence YQSNQTEKALQVWTK-C, from the N Terminus of the protein sequence according to NP_005046.2; NP_116034.2.

Please note the [peptide](#) is available for sale.

Purification and Storage

Purified from goat serum by ammonium sulphate precipitation followed by antigen affinity chromatography using the immunizing peptide.

Supplied at 0.5 mg/ml in Tris saline, 0.02% sodium azide, pH7.3 with 0.5% bovine serum albumin.

Aliquot and store at -20°C. Minimize freezing and thawing.

Applications Tested

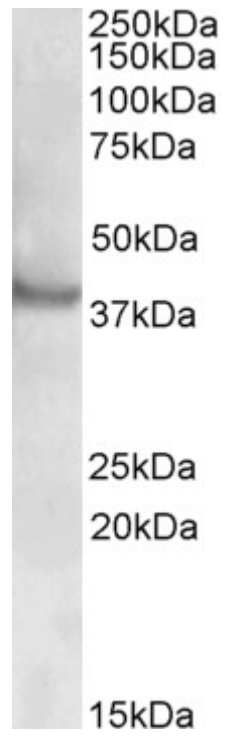
Peptide ELISA: antibody detection limit dilution 1:128000.

Western blot: Approx 38kDa band observed in Human Skeletal Muscle lysates (calculated MW of 39.9kDa according to NP_116034.2). Recommended concentration: 0.3-1µg/ml.

Species Reactivity

Tested: Human

Expected from sequence similarity: Human, Mouse, Rat



EB09510 (0.5µg/ml) staining of Human Skeletal Muscle lysate (35µg protein in RIPA buffer). Primary incubation was 1 hour. Detected by chemiluminescence.