



Everest Biotech Ltd
Cherwell Innovation Centre
77 Heyford Park
Upper Heyford
Oxfordshire
OX25 5HD, United Kingdom

everestbiotech.com

sales@everestbiotech.com

support@everestbiotech.com

Tel +44 1869 238326

Fax +44 1869 238327

Research Use Only. Not for diagnostic or therapeutic use.

Storage: For long-term storage keep aliquots at -20°C. (Store no longer than 12 months at 4°C). Minimize freezing and thawing.

EB06672 - Goat Anti-RARA Antibody

Size: 100µg specific antibody in 200µl



Target Protein

Principal Names: nucleophosmin-retinoic acid receptor alpha fusion protein NPM-RAR short form, nucleophosmin-retinoic acid receptor alpha fusion protein NPM-RAR long form, Retinoic acid receptor, alpha polypeptide, retinoic acid receptor, alpha, NR1B1, RAR, RARA

Official Symbol: RARA

Accession Number(s): NP_000955.1; NP_001138773.1; NP_001019980.1; NP_001138774.1

Human GeneID(s): [5914](#)

Important Comments: NP_000955.1 (isfa) and NP_001138773.1(alpha) represent identical proteins. This antibody is expected to recognize all three reported isoforms (NP_000955.1; NP_001019980.1; NP_001138774.1). Please note the epitope is from the mouse/rat sequence. Human sequence is SPSLSPSSNRSSPATHSP and thus highly similar.

Immunogen

Peptide with sequence C-SPSLSPSSHRSSPATQSP, from the C Terminus of the protein sequence according to NP_000955.1; NP_001138773.1; NP_001019980.1; NP_001138774.1.

Please note the [peptide](#) is available for sale.

Purification and Storage

Purified from goat serum by ammonium sulphate precipitation followed by antigen affinity chromatography using the immunizing peptide.

Supplied at 0.5 mg/ml in Tris saline, 0.02% sodium azide, pH7.3 with 0.5% bovine serum albumin.

Aliquot and store at -20°C. Minimize freezing and thawing.

Applications Tested

Peptide ELISA: antibody detection limit dilution 1:8000.

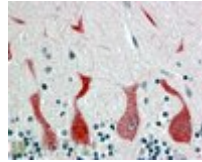
Western blot: Approx 50kDa band observed in Human Brain (Cerebellum and Hippocampus) lysates (calculated MW of 50.8kDa according to NP_000955.1; NP_001019980.1). Recommended concentration: 1-3µg/ml.

IHC: In paraffin embedded Human Cerebellum shows staining of Purkinje cytoplasm. Recommended concentration, 4-6µg/ml.

Species Reactivity

Tested: Human

Expected from sequence similarity: Human, Mouse, Rat, Dog, Cow



EB06672 (4µg/ml) staining of paraffin embedded Human Cerebellum. Steamed antigen retrieval with citrate buffer pH 6, AP-staining.



EB06672 (0.05µg/ml) staining of Human Cerebellum lysate (35µg protein in RIPA buffer). Primary incubation was 1 hour. Detected by chemiluminescence.