



UK Office

Everest Biotech Ltd

Cherwell Innovation Centre
77 Heyford Park
Upper Heyford
Oxfordshire
OX25 5HD
UK

Enquiries:

info@everestbiotech.com

Sales:

sales@everestbiotech.com

Tech support:

support@everestbiotech.com

Tel: +44 (0)1869 238326

Fax: +44 (0)1869 238327

US Office

Everest Biotech c/o Abcore

405 Maple Street, Suite A106
Ramona,
CA 92065
USA

Inquiries:

info@everestbiotech.com

Sales:

usasales@everestbiotech.com

Tech support:

support@everestbiotech.com

Tel: 888-320-4628 (toll-free)

Fax: 888-841-9041

www.everestbiotech.com

**Research Use Only. Not for
diagnostic or therapeutic use.**

EB06176 - Goat Anti-RASAL Antibody

Size: 100µg specific antibody in 200µl



Target Protein

Principal Names: RASAL1, RASAL, RAS protein activator like 1 (GAP1 like), GAP1 like protein, RAS-GTPase-activating protein-like, RAS protein activator like 1

Official Symbol: RASAL1

Accession Number(s): NP_004649.1

Human GeneID(s): [8437](#)

Immunogen

Peptide with sequence C-QERGKAALGPLGP, from the C Terminus of the protein sequence according to NP_004649.1.

Please note the [peptide](#) is available for sale.

Purification and Storage

Purified from goat serum by ammonium sulphate precipitation followed by antigen affinity chromatography using the immunizing peptide.

Supplied at 0.5 mg/ml in Tris saline, 0.02% sodium azide, pH7.3 with 0.5% bovine serum albumin.

Aliquot and store at -20°C. Minimize freezing and thawing.

Applications Tested

Peptide ELISA: antibody detection limit dilution 1:32000.

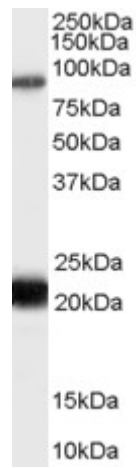
Western blot: Approx 90kDa band observed in Human Thyroid gland lysates (calculated MW of 90.0kDa according to NP_004649.1). Recommended concentration: 0.3-1µg/ml.

An additional band of unknown identity was also consistently observed at 21kDa. This band was successfully blocked by incubation with the immunising peptide.

Species Reactivity

Tested: Human

Expected from sequence similarity: Human



EB06176 (0.3 μ g/ml) staining of Human Thyroid lysate (35 μ g protein in RIPA buffer). Primary incubation was 1 hour. Detected by chemiluminescence.