



## UK Office

### Everest Biotech Ltd

Cherwell Innovation Centre  
77 Heyford Park  
Upper Heyford  
Oxfordshire  
OX25 5HD  
UK

Enquiries:

[info@everestbiotech.com](mailto:info@everestbiotech.com)

Sales:

[sales@everestbiotech.com](mailto:sales@everestbiotech.com)

Tech support:

[support@everestbiotech.com](mailto:support@everestbiotech.com)

Tel: +44 (0)1869 238326

Fax: +44 (0)1869 238327

## US Office

### Everest Biotech c/o Abcore

405 Maple Street, Suite A106  
Ramona,  
CA 92065  
USA

Inquiries:

[info@everestbiotech.com](mailto:info@everestbiotech.com)

Sales:

[usasales@everestbiotech.com](mailto:usasales@everestbiotech.com)

Tech support:

[support@everestbiotech.com](mailto:support@everestbiotech.com)

Tel: 888-320-4628 (toll-free)

Fax: 888-841-9041

[www.everestbiotech.com](http://www.everestbiotech.com)

**Research Use Only. Not for  
diagnostic or therapeutic use.**

## EB09171 - Goat Anti-RASSF1A Antibody

Size: 100µg specific antibody in 200µl



### Target Protein

**Principal Names:** RASSF1, Ras association (RalGDS/AF-6) domain family member 1, 123F2, NORE2A, RASSF1A, RDA32, REH3P21, OTTHUMP00000195503, Ras association (RalGDS/AF-6) domain family 1, Ras association domain family 1, Ras association domain family protein 1, WUGSC:H\_LUCA12.5, cardiac-specific ras association domain family 1 protein, pancreas-specific ras association domain family 1 protein, tumor suppressor protein RDA32

**Official Symbol:** RASSF1

**Accession Number(s):** NP\_009113.3; NP\_733830.1; NP\_733831.1; NP\_733832.1

**Human GeneID(s):** [11186](#)

**Important Comments:** This antibody is expected to recognize reported isoforms A, C and D (NP\_009113.3; NP\_733831.1; NP\_733832.1) .

### Immunogen

Peptide with sequence C-SQAEIEQKIKEYN, from the internal region of the protein sequence according to NP\_009113.3; NP\_733830.1; NP\_733831.1; NP\_733832.1.

Please note the [peptide](#) is available for sale.

### Purification and Storage

Purified from goat serum by ammonium sulphate precipitation followed by antigen affinity chromatography using the immunizing peptide.

Supplied at 0.5 mg/ml in Tris saline, 0.02% sodium azide, pH7.3 with 0.5% bovine serum albumin.

Aliquot and store at -20°C. Minimize freezing and thawing.

### Applications Tested

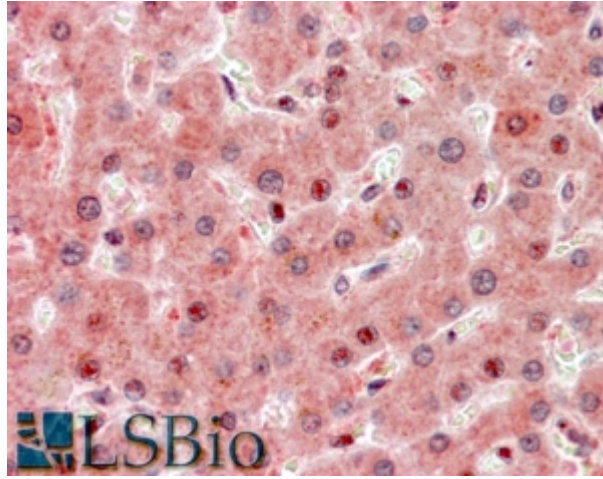
**Peptide ELISA:** antibody detection limit dilution 1:128000.

**IHC:** In paraffin embedded Human Liver shows preferential nuclear staining in hepatocytes. Paraffin embedded Human Brain (Cortex). Recommended concentration: 3.75µg/ml.

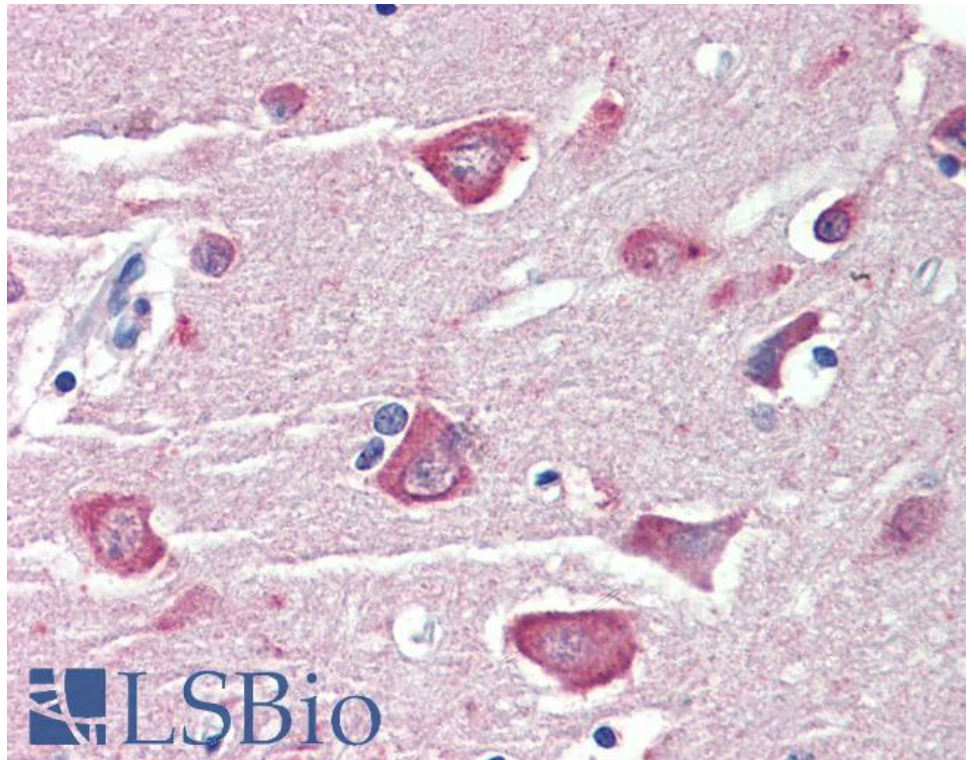
### Species Reactivity

**Tested:** Human

**Expected from sequence similarity:** Human, Mouse, Rat, Dog, Cow



EB09171 (3.75µg/ml) staining of paraffin embedded Human Liver. Steamed antigen retrieval with citrate buffer pH 6, AP-staining.



EB09171 (3.75µg/ml) staining of paraffin embedded Human Cortex. Steamed antigen retrieval with citrate buffer pH 6, AP-staining.