



Everest Biotech Ltd
Cherwell Innovation Centre
77 Heyford Park
Upper Heyford
Oxfordshire
OX25 5HD, United Kingdom

everestbiotech.com

sales@everestbiotech.com

support@everestbiotech.com

Tel +44 1869 238326

Fax +44 1869 238327

Research Use Only. Not for diagnostic or therapeutic use.

Storage: For long-term storage keep aliquots at -20°C. (Store no longer than 12 months at 4°C). Minimize freezing and thawing.

EB06671 - Goat Anti-RBP1 Antibody

Size: 100µg specific antibody in 200µl



Target Protein

Principal Names: CRBPI, retinol-binding protein 1, cellular, retinol binding protein 1, cellular, CRABP-I, CRBP1, RBPC, CRBP, RBP1

Official Symbol: RBP1

Accession Number(s): NP_002890.1

Human GeneID(s): [5947](#)

Immunogen

Peptide with sequence VEGVVCKQVFKKVQ, from the C Terminus of the protein sequence according to NP_002890.1.

Please note the [peptide](#) is available for sale.

Purification and Storage

Purified from goat serum by ammonium sulphate precipitation followed by antigen affinity chromatography using the immunizing peptide.

Supplied at 0.5 mg/ml in Tris saline, 0.02% sodium azide, pH7.3 with 0.5% bovine serum albumin.

Aliquot and store at -20°C. Minimize freezing and thawing.

Applications Tested

Peptide ELISA: antibody detection limit dilution 1:4000.

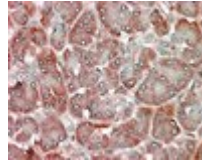
Western blot: Approx 16kDa band observed in Murine NIH 3T3 lysates (calculated MW of 15.9kDa according to NP_002890.1). Recommended concentration: 0.1-0.3µg/ml.

IHC: In paraffin embedded Human Pancreas shows vesicular staining in the acinar cytoplasm but oriented towards the interlobular space.. Recommended concentration, 5-10µg/ml.

Species Reactivity

Tested: Human, Mouse

Expected from sequence similarity: Human, Mouse, Cow



EB06671 (5µg/ml) staining of paraffin embedded Human Pancreas. Steamed antigen retrieval with citrate buffer pH 6, AP-staining.



EB06671 (0.1µg/ml) staining of NIH 3T3 lysate (35µg protein in RIPA buffer). Primary incubation was 1 hour. Detected by chemiluminescence.