



## UK Office

### Everest Biotech Ltd

Cherwell Innovation Centre  
77 Heyford Park  
Upper Heyford  
Oxfordshire  
OX25 5HD  
UK

Enquiries:

[info@everestbiotech.com](mailto:info@everestbiotech.com)

Sales:

[sales@everestbiotech.com](mailto:sales@everestbiotech.com)

Tech support:

[support@everestbiotech.com](mailto:support@everestbiotech.com)

Tel: +44 (0)1869 238326

[www.everestbiotech.com](http://www.everestbiotech.com)

**Research Use Only. Not for  
diagnostic or therapeutic use.**

## EB12701 - Goat Anti-RE1-silencing transcription factor Antibody

Size: 100µg specific antibody in 200µl



### Target Protein

**Principal Names:** REST, RE1-silencing transcription factor, NRSF, XBR, RE1-silencing transcription factor variant E1a/E2/E3/E4c, RE1-silencing transcription factor variant E1a/E2/E3/E5, RE1-silencing transcription factor variant E1a/E2/E3/N3a/E4i, RE1-silencing transcription factor variant E1a/E2/E3/N3c/E4, RE1-silencing transcription factor variant E1a/E2/E4, RE1-silencing transcription factor variant E1a/E2k/E2i/E3/E4j, RE1-silencing transcription factor variant E1b/E2/E3/E5, RE1-silencing transcription factor variant E1b/E2/E3/N3b/E4i, RE1-silencing transcription factor variant E1b/E2/E3/N3c/E4, RE1-silencing transcription factor variant E1b/E2c/E2j/E3/E4, RE1-silencing transcription factor variant E1c/E2/E3/E5, RE1-silencing transcription factor variant E1c/E2g/E3/E4, neural-restrictive silencer factor, neuron restrictive silencer factor, repressor binding to the X2 box

**Official Symbol:** REST

**Accession Number(s):** NP\_005603.3

**Human GeneID(s):** [5978](#)

**Important Comments:** Reported variants represent identical protein: NP\_001180437.1, NP\_005603.3

### Immunogen

Peptide with sequence C-PETPGAEDKGKSSK, from the internal region of the protein sequence according to NP\_005603.3.

Please note the [peptide](#) is available for sale.

### Purification and Storage

Purified from goat serum by ammonium sulphate precipitation followed by antigen affinity chromatography using the immunizing peptide.

Supplied at 0.5 mg/ml in Tris saline, 0.02% sodium azide, pH7.3 with 0.5% bovine serum albumin.

Aliquot and store at -20°C. Minimize freezing and thawing.

### Applications Tested

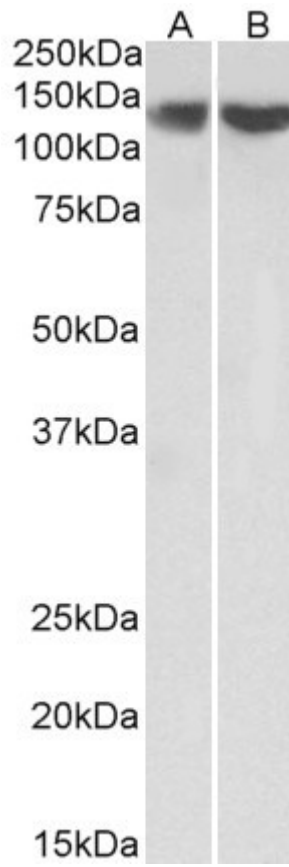
**Peptide ELISA:** antibody detection limit dilution 1:64000.

**Western blot:** Approx 140kDa band observed in nuclear lysates of cell lines HEK293 and HeLa (calculated MW of 122kDa according to NP\_005603.3). This molecular weight is routinely observed by other sources. Recommended concentration: 0.3-1µg/ml.

### Species Reactivity

**Tested:** Human

**Expected from sequence similarity:** Human



EB12701 (0.3 $\mu$ g/ml) staining of HEK293 (A) and HeLa (B) lysate (35 $\mu$ g protein in RIPA buffer). Primary incubation was 1 hour. Detected by chemiluminescence.