



UK Office

Everest Biotech Ltd

Cherwell Innovation Centre
77 Heyford Park
Upper Heyford
Oxfordshire
OX25 5HD
UK

Enquiries:

info@everestbiotech.com

Sales:

sales@everestbiotech.com

Tech support:

support@everestbiotech.com

Tel: +44 (0)1869 238326

www.everestbiotech.com

**Research Use Only. Not for
diagnostic or therapeutic use.**

EB07855 - Goat Anti-Renalase (aa 134 to 147) Antibody

Size: 100µg specific antibody in 200µl



Target Protein

Principal Names: renalase, C10orf59, chromosome 10 open reading frame 59, FLJ11218

Official Symbol: C10orf59

Accession Number(s): NP_001026879.1; NP_060833.1

Human GeneID(s): [55328](#)

Important Comments: This antibody is expected to recognize both reported isoforms (NP_001026879.1 and NP_060833.1).

Immunogen

Peptide with sequence C-QINLRDDKWEVSKQ, from the Internal region of the protein sequence according to NP_001026879.1; NP_060833.1.

Please note the [peptide](#) is available for sale.

Purification and Storage

Purified from goat serum by ammonium sulphate precipitation followed by antigen affinity chromatography using the immunizing peptide.

Supplied at 0.5 mg/ml in Tris saline, 0.02% sodium azide, pH7.3 with 0.5% bovine serum albumin.

Aliquot and store at -20°C. Minimize freezing and thawing.

Applications Tested

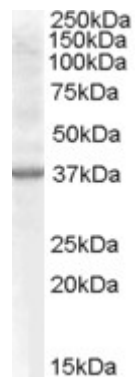
Peptide ELISA: antibody detection limit dilution 1:32000.

Western blot: Approx 37kDa band observed in Mouse Kidney and Rat Kidney lysates (calculated MW of 37.8kDa according to Human NP_001026879.1 and 35.0kDa according to Rat NP_001014189.1). Recommended concentration: 0.5-1.5µg/ml.

Species Reactivity

Tested: Mouse, Rat

Expected from sequence similarity: Human, Mouse, Rat



EB07855 (0.5 μ g/ml) staining of Rat Kidney lysate (35 μ g protein in RIPA buffer). Primary incubation was 1 hour.
Detected by chemiluminescence.