



## UK Office

### Everest Biotech Ltd

Cherwell Innovation Centre  
77 Heyford Park  
Upper Heyford  
Oxfordshire  
OX25 5HD  
UK

Enquiries:

[info@everestbiotech.com](mailto:info@everestbiotech.com)

Sales:

[sales@everestbiotech.com](mailto:sales@everestbiotech.com)

Tech support:

[support@everestbiotech.com](mailto:support@everestbiotech.com)

Tel: +44 (0)1869 238326

Fax: +44 (0)1869 238327

## US Office

### Everest Biotech c/o Abcore

405 Maple Street, Suite A106  
Ramona,  
CA 92065  
USA

Inquiries:

[info@everestbiotech.com](mailto:info@everestbiotech.com)

Sales:

[usasales@everestbiotech.com](mailto:usasales@everestbiotech.com)

Tech support:

[support@everestbiotech.com](mailto:support@everestbiotech.com)

Tel: 888-320-4628 (toll-free)

Fax: 888-841-9041

[www.everestbiotech.com](http://www.everestbiotech.com)

**Research Use Only. Not for  
diagnostic or therapeutic use.**

## EB07855 - Goat Anti-Renalase (aa 134 to 147) Antibody

Size: 100µg specific antibody in 200µl



### Target Protein

**Principal Names:** renalase, C10orf59, chromosome 10 open reading frame 59, FLJ11218

**Official Symbol:** C10orf59

**Accession Number(s):** NP\_001026879.1; NP\_060833.1

**Human GeneID(s):** [55328](#)

**Important Comments:** This antibody is expected to recognize both reported isoforms (NP\_001026879.1 and NP\_060833.1).

### Immunogen

Peptide with sequence C-QINLRDDKWEVSKQ, from the Internal region of the protein sequence according to NP\_001026879.1; NP\_060833.1.

Please note the [peptide](#) is available for sale.

### Purification and Storage

Purified from goat serum by ammonium sulphate precipitation followed by antigen affinity chromatography using the immunizing peptide.

Supplied at 0.5 mg/ml in Tris saline, 0.02% sodium azide, pH7.3 with 0.5% bovine serum albumin.

Aliquot and store at -20°C. Minimize freezing and thawing.

### Applications Tested

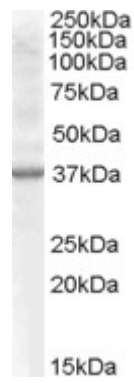
**Peptide ELISA:** antibody detection limit dilution 1:32000.

**Western blot:** Approx 37kDa band observed in Mouse Kidney and Rat Kidney lysates (calculated MW of 37.8kDa according to Human NP\_001026879.1 and 35.0kDa according to Rat NP\_001014189.1). Recommended concentration: 0.5-1.5µg/ml.

### Species Reactivity

**Tested:** Mouse, Rat

**Expected from sequence similarity:** Human, Mouse, Rat



EB07855 (0.5µg/ml) staining of Rat Kidney lysate (35µg protein in RIPA buffer). Primary incubation was 1 hour.  
Detected by chemiluminescence.