



UK Office

Everest Biotech Ltd

Cherwell Innovation Centre
77 Heyford Park
Upper Heyford
Oxfordshire
OX25 5HD
UK

Enquiries:

info@everestbiotech.com

Sales:

sales@everestbiotech.com

Tech support:

support@everestbiotech.com

Tel: +44 (0)1869 238326

Fax: +44 (0)1869 238327

US Office

Everest Biotech c/o Abcore

405 Maple Street, Suite A106
Ramona,
CA 92065
USA

Inquiries:

info@everestbiotech.com

Sales:

usasales@everestbiotech.com

Tech support:

support@everestbiotech.com

Tel: 888-320-4628 (toll-free)

Fax: 888-841-9041

www.everestbiotech.com

**Research Use Only. Not for
diagnostic or therapeutic use.**

EB09512 - Goat Anti-Restin / CLIP1 Antibody

Size: 100µg specific antibody in 200µl



Target Protein

Principal Names: CLIP1, CAP-GLY domain containing linker protein 1, CLIP, CLIP-170, CLIP170, CYLN1, MGC131604, RSN, Reed-Steinberg cell-expressed intermediate filament-associated protein, cytoplasmic linker 1, restin, restin (Reed-Steinberg cell-expressed intermediate filament-associated protein)

Official Symbol: CLIP1

Accession Number(s): NP_002947.1; NP_937883.1

Human GeneID(s): [6249](#)

Non-Human GeneID(s): 56430 (mouse), 65201 (rat)

Important Comments: This antibody is expected to recognize both reported isoforms (NP_002947.1; NP_937883.1).

Immunogen

Peptide with sequence C-PHSTHHGSRGEERP, from the C Terminus of the protein sequence according to NP_002947.1; NP_937883.1.

Please note the [peptide](#) is available for sale.

Purification and Storage

Purified from goat serum by ammonium sulphate precipitation followed by antigen affinity chromatography using the immunizing peptide.

Supplied at 0.5 mg/ml in Tris saline, 0.02% sodium azide, pH7.3 with 0.5% bovine serum albumin.

Aliquot and store at -20°C. Minimize freezing and thawing.

Applications Tested

Peptide ELISA: antibody detection limit dilution 1:8000.

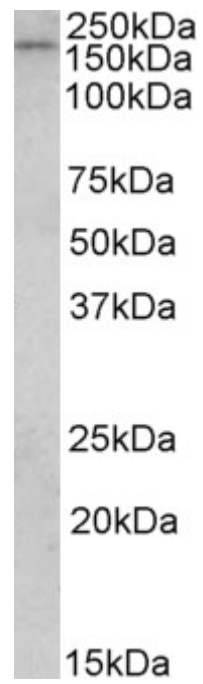
Western blot: Approx 160kDa band observed in Human Breast Cancer lysates (calculated MW of 161kDa according to NP_002947.1. Recommended concentration: 1-3µg/ml.

IHC: Paraffin embedded Human Thyroid and Prostate. Recommended concentration: 2.5µg/ml.

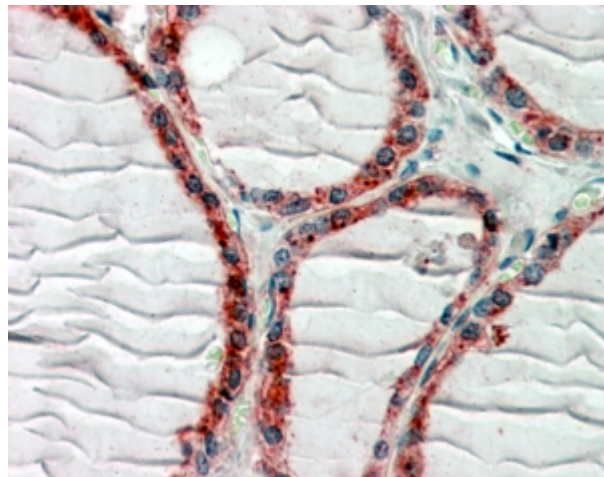
Species Reactivity

Tested: Human

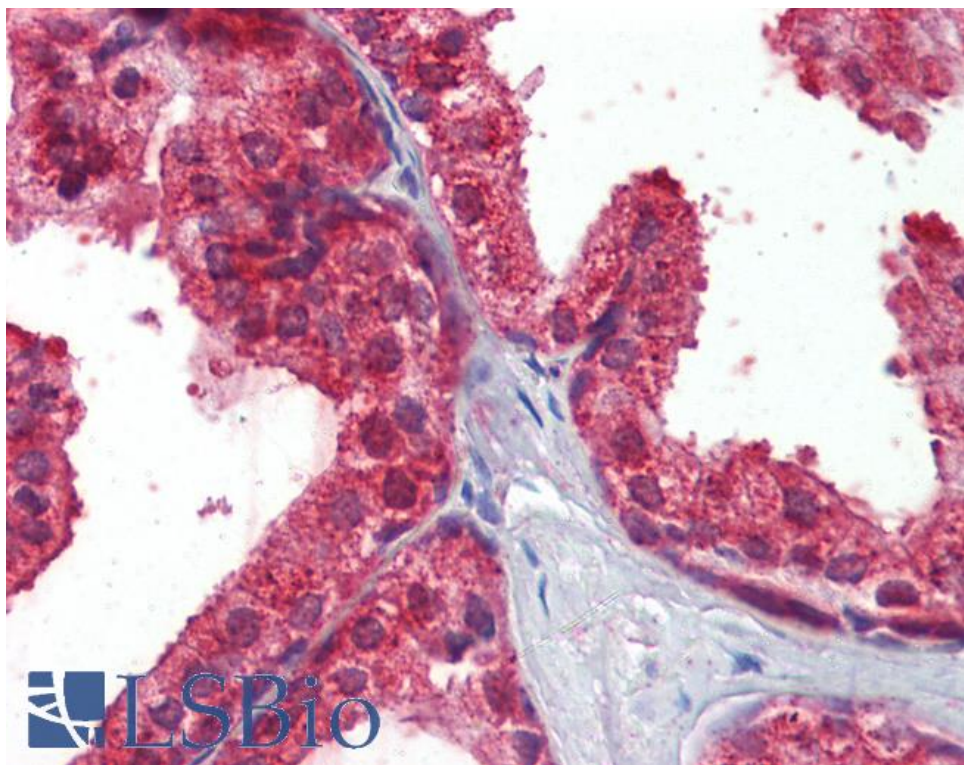
Expected from sequence similarity: Human, Mouse, Rat, Dog, Pig



EB09512 (1 μ g/ml) staining of Human Breast Cancer lysate (35 μ g protein in RIPA buffer). Primary incubation was 1 hour. Detected by chemiluminescence.



EB09512 (2.5 μ g/ml) staining of paraffin embedded Human Thyroid Gland. Steamed antigen retrieval with citrate buffer pH 6, AP-staining.



EB09512 (2.5µg/ml) staining of paraffin embedded Human Prostate. Steamed antigen retrieval with citrate buffer Ph 6, AP-staining.