

## UK Office

### Everest Biotech Ltd

Cherwell Innovation Centre  
77 Heyford Park  
Upper Heyford  
Oxfordshire  
OX25 5HD  
UK

Enquiries:

[info@everestbiotech.com](mailto:info@everestbiotech.com)

Sales:

[sales@everestbiotech.com](mailto:sales@everestbiotech.com)

Tech support:

[support@everestbiotech.com](mailto:support@everestbiotech.com)

Tel: +44 (0)1869 238326

[www.everestbiotech.com](http://www.everestbiotech.com)

**Research Use Only. Not for  
diagnostic or therapeutic use.**

## EB10082 - Goat Anti-RFX5 Antibody

Size: 100µg specific antibody in 200µl



### Target Protein

**Principal Names:** OTTHUMP00000196318, regulatory factor X, 5, regulatory factor X, 5 (influences HLA class II expression), RFX5

**Official Symbol:** RFX5

**Accession Number(s):** NP\_000440.1

**Human GeneID(s):** [5993](#)

**Non-Human GeneID(s):** 53970 (mouse), 310659 (rat)

**Important Comments:** Reported variants represent identical protein: NP\_000440.1, NP\_001020774.1

### Immunogen

Peptide with sequence C-TGDKSSEPSTLSNE, from the internal region of the protein sequence according to NP\_000440.1.

Please note the [peptide](#) is available for sale.

### Purification and Storage

Purified from goat serum by ammonium sulphate precipitation followed by antigen affinity chromatography using the immunizing peptide.

Supplied at 0.5 mg/ml in Tris saline, 0.02% sodium azide, pH7.3 with 0.5% bovine serum albumin.

Aliquot and store at -20°C. Minimize freezing and thawing.

### Applications Tested

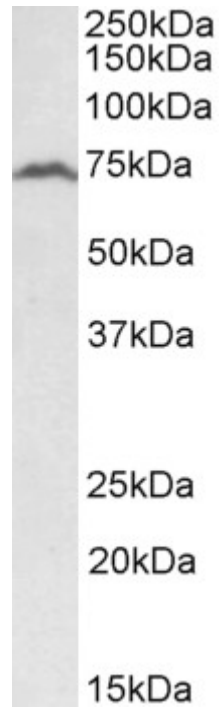
**Peptide ELISA:** antibody detection limit dilution 1:1000.

**Western blot:** Approx 70kDa band observed in lysates of cell line Daudi and in NIH3T3 nuclear lysates (calculated MW of 65.3kDa according to NP\_000440.1). Recommended concentration: 1-3µg/ml.

### Species Reactivity

**Tested:** Human, Mouse

**Expected from sequence similarity:** Human, Mouse, Rat, Pig, Dog, Cow



EB10082 (2 $\mu$ g/ml) staining of Daudi lysate (35 $\mu$ g protein in RIPA buffer). Primary incubation was 1 hour. Detected by chemiluminescence.



EB10082 (2 $\mu$ g/ml) staining of NIH3T3 nuclear lysate (35 $\mu$ g protein in RIPA buffer). Primary incubation was 1 hour. Detected by chemiluminescence.