



UK Office

Everest Biotech Ltd

Cherwell Innovation Centre
77 Heyford Park
Upper Heyford
Oxfordshire
OX25 5HD
UK

Enquiries:

info@everestbiotech.com

Sales:

sales@everestbiotech.com

Tech support:

support@everestbiotech.com

Tel: +44 (0)1869 238326

Fax: +44 (0)1869 238327

US Office

Everest Biotech c/o Abcore

405 Maple Street, Suite A106
Ramona,
CA 92065
USA

Inquiries:

info@everestbiotech.com

Sales:

usasales@everestbiotech.com

Tech support:

support@everestbiotech.com

Tel: 888-320-4628 (toll-free)

Fax: 888-841-9041

www.everestbiotech.com

**Research Use Only. Not for
diagnostic or therapeutic use.**

EB05421 - Goat Anti-RGS1 / 1R20 Antibody

Size: 100µg specific antibody in 200µl



Target Protein

Principal Names: RGS1, 1R20, regulator of G-protein signalling 1, BL34, IER1, IR20, 1R20, Regulator of G-protein signaling 1, B-cell activation protein BL34, early response protein 1R20, immediate-early response 1, B-cell specific

Official Symbol: RGS1

Accession Number(s): NP_002913.3

Human GeneID(s): [5996](#)

Non-Human GeneID(s): 50778 (mouse)

Immunogen

Peptide with sequence C-NLLNDLQANSLK, from the C Terminus of the protein sequence according to NP_002913.3.

Please note the [peptide](#) is available for sale.

Purification and Storage

Purified from goat serum by ammonium sulphate precipitation followed by antigen affinity chromatography using the immunizing peptide.

Supplied at 0.5 mg/ml in Tris saline, 0.02% sodium azide, pH7.3 with 0.5% bovine serum albumin.

Aliquot and store at -20°C. Minimize freezing and thawing.

Applications Tested

Peptide ELISA: antibody detection limit dilution 1:32000.

Western blot: Approx 25kDa band seen in HepG2 lysate. Recommended for use at 0.5-2µg/ml.

IHC: Paraffin embedded Human Thymus and Small Intestine. Recommended concentration: 2.5µg/ml.

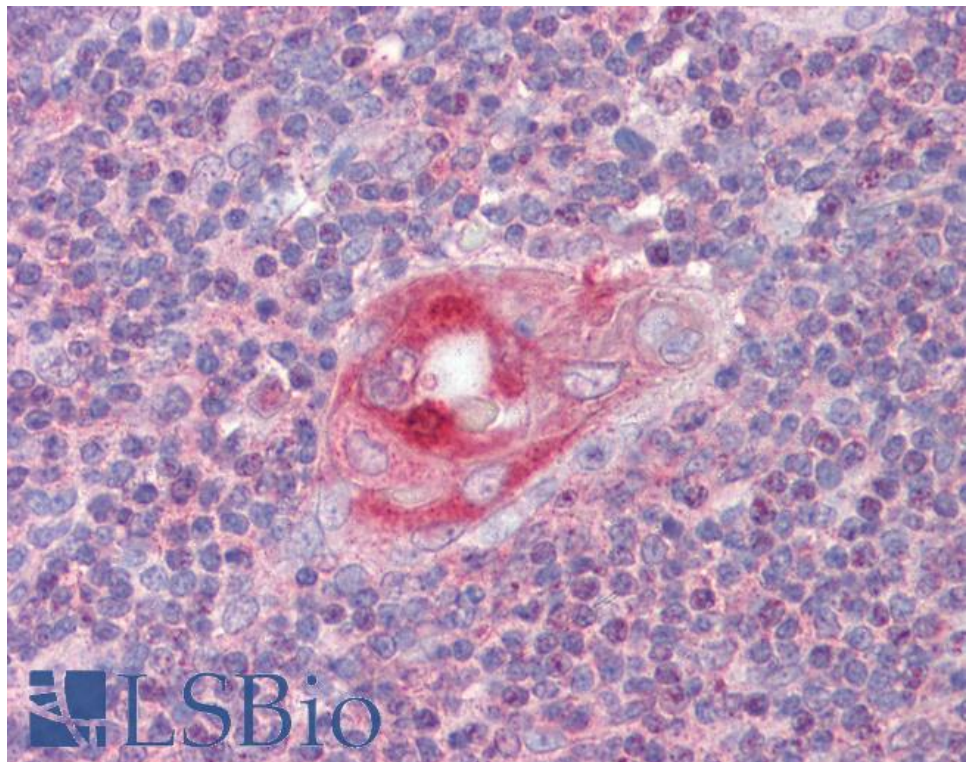
Species Reactivity

Tested: Human

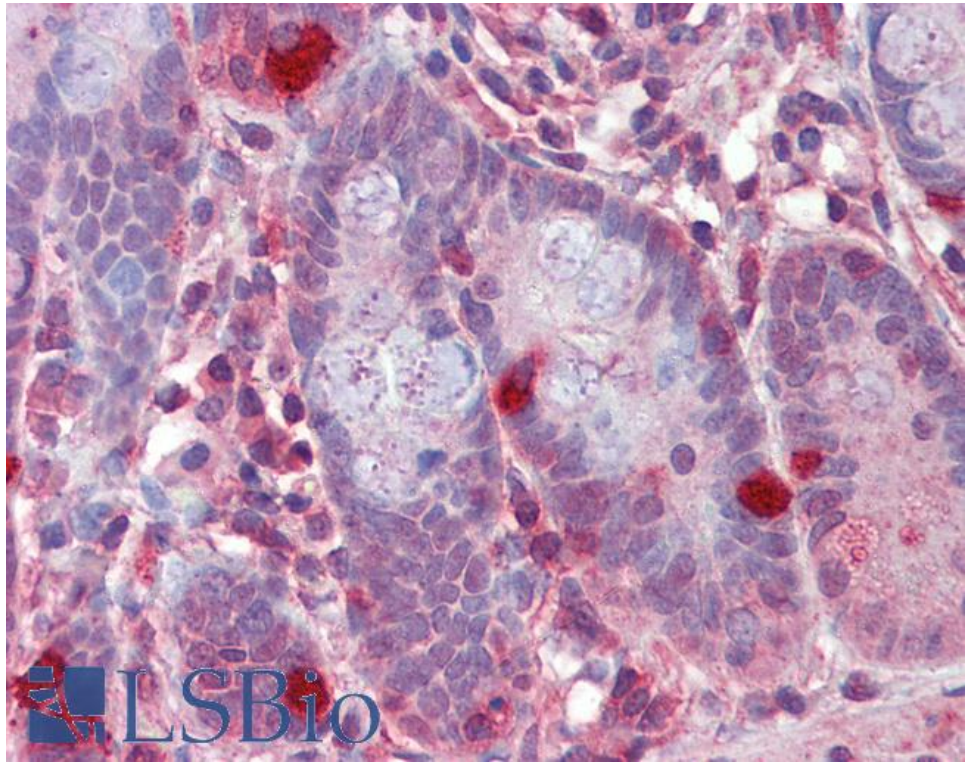
Expected from sequence similarity: Human, Mouse, Rat, Dog, Cow



EB05421 staining (1µg/ml) of HepG2 lysate (RIPA buffer, 30µg total protein per lane). Primary incubated for 1 hour. Detected by chemiluminescence.



EB05421 (2.5µg/ml) staining of paraffin embedded Human Thymus. Steamed antigen retrieval with citrate buffer pH 6, AP-staining.



EB05421 (2.5µg/ml) staining of paraffin embedded Human Small Intestine. Steamed antigen retrieval with citrate buffer pH 6, AP-staining.