



UK Office

Everest Biotech Ltd

Cherwell Innovation Centre
77 Heyford Park
Upper Heyford
Oxfordshire
OX25 5HD
UK

Enquiries:

info@everestbiotech.com

Sales:

sales@everestbiotech.com

Tech support:

support@everestbiotech.com

Tel: +44 (0)1869 238326

Fax: +44 (0)1869 238327

US Office

Everest Biotech c/o Abcore

405 Maple Street, Suite A106
Ramona,
CA 92065
USA

Inquiries:

info@everestbiotech.com

Sales:

usasales@everestbiotech.com

Tech support:

support@everestbiotech.com

Tel: 888-320-4628 (toll-free)

Fax: 888-841-9041

www.everestbiotech.com

**Research Use Only. Not for
diagnostic or therapeutic use.**

EB06372 - Goat Anti-RGS18 Antibody

Size: 100µg specific antibody in 200µl



Target Protein

Principal Names: RGS18, RGS13, regulator of G-protein signalling 18, regulator of G-protein signaling 13, RP11-142L4.1, regulator of G-protein signalling 13

Official Symbol: RGS18

Accession Number(s): NP_570138.1

Human GeneID(s): [64407](#)

Immunogen

Peptide with sequence CNEFQDVQSDVAIWL, from the C Terminus of the protein sequence according to NP_570138.1.

Please note the [peptide](#) is available for sale.

Purification and Storage

Purified from goat serum by ammonium sulphate precipitation followed by antigen affinity chromatography using the immunizing peptide.

Supplied at 0.5 mg/ml in Tris saline, 0.02% sodium azide, pH7.3 with 0.5% bovine serum albumin.

Aliquot and store at -20°C. Minimize freezing and thawing.

Applications Tested

Peptide ELISA: antibody detection limit dilution 1:16000.

Western blot: Approx 28kDa band observed in Human Peripheral Blood

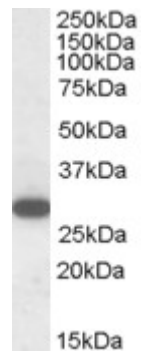
Mononucleocytes (lymphocytes) lysates (calculated MW of 27.6kDa according to NP_570138.1). Recommended concentration: 1-3µg/ml. Primary incubation was 1 hour.

IHC: Paraffin embedded Human Prostate and Small Intestine. Recommended concentration: 5µg/ml.

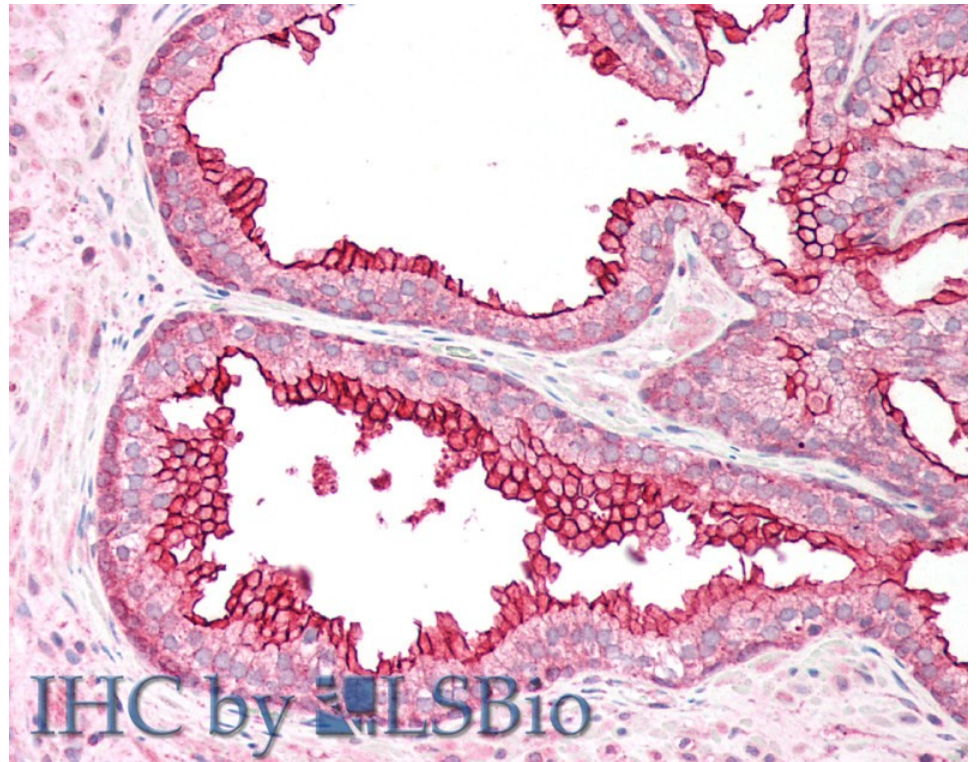
Species Reactivity

Tested: Human

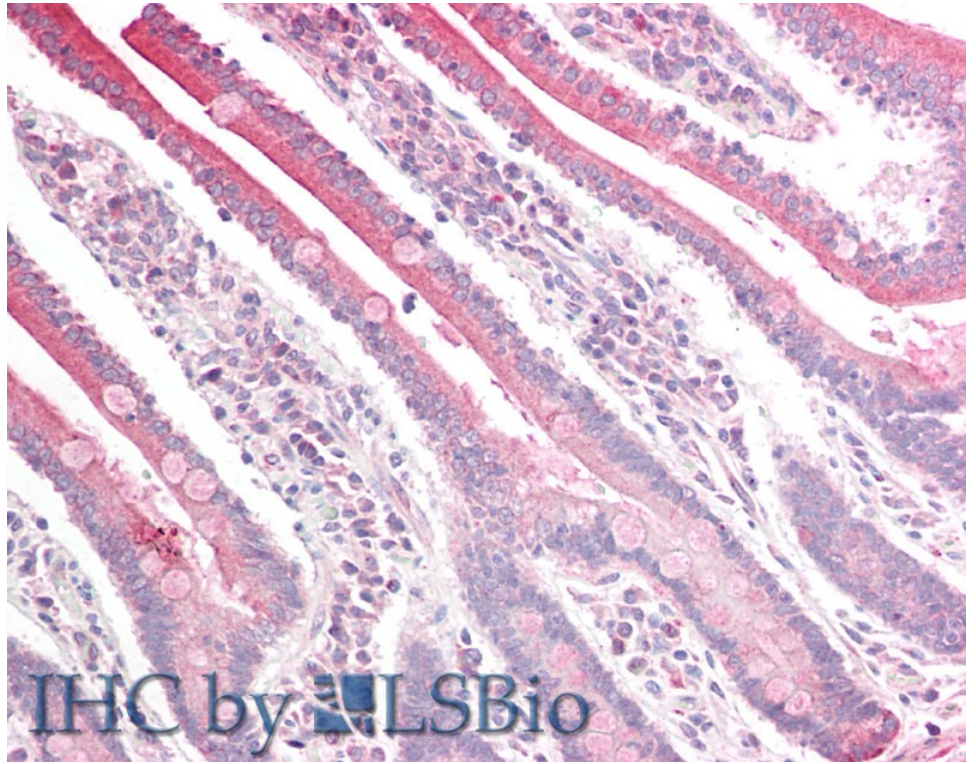
Expected from sequence similarity: Human



EB06372 (1 μ g/ml) staining of Human Peripheral Blood Mononucleocytes lysate (35 μ g protein in RIPA buffer).
Detected by chemiluminescence.



EB06372 (5 μ g/ml) staining of paraffin embedded Human Prostate. Steamed antigen retrieval with citrate buffer pH 6, AP-staining.



EB06372 (5µg/ml) staining of paraffin embedded Human Small Intestine. Steamed antigen retrieval with citrate buffer pH 6, AP-staining.